



Modular International, Inc.

Light efficiency:



Light quality:

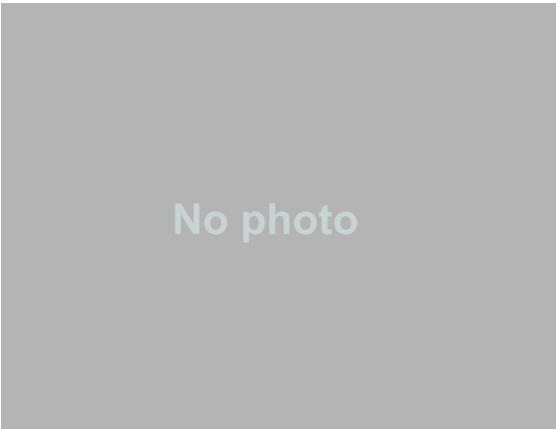


Color temperature:



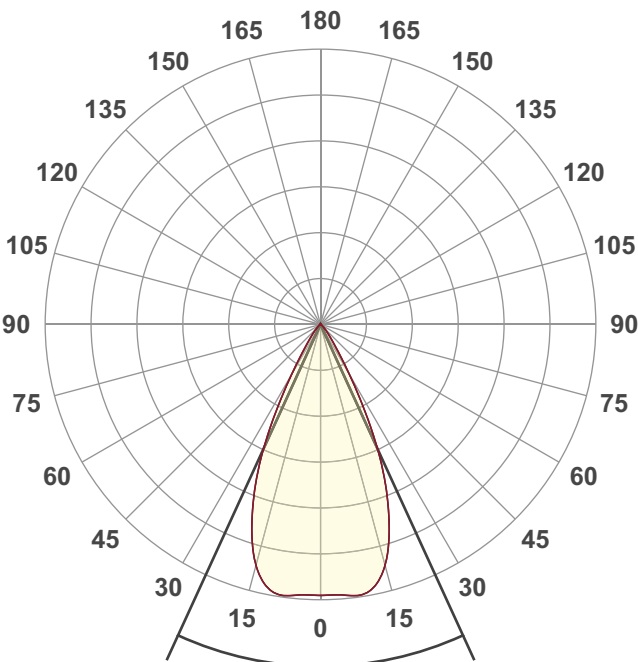
Output: 1351 lm
Peak: 2106 cd
Power: 13,3 W
PF: 0,94

4 PLANES



Product name:
LED-716-45

Date and time:
30.10.2020 17:37:27



Beam angle

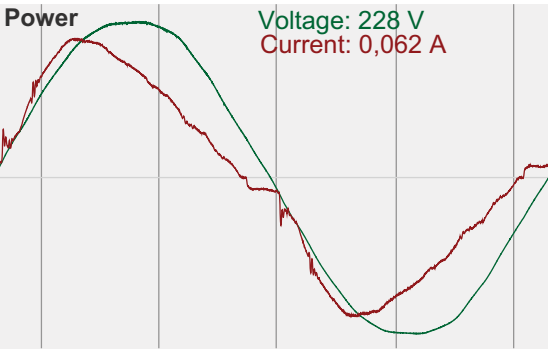
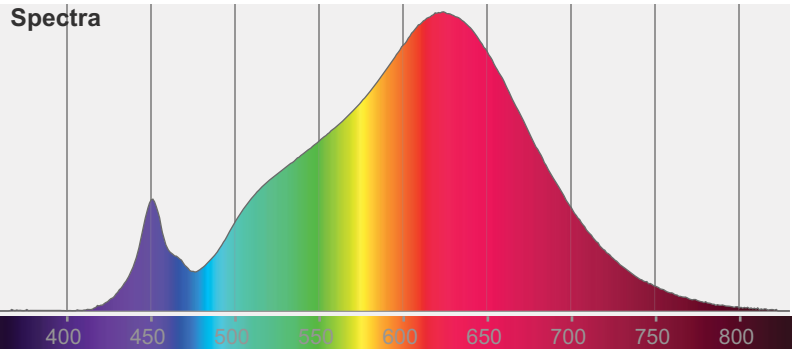
49,2°

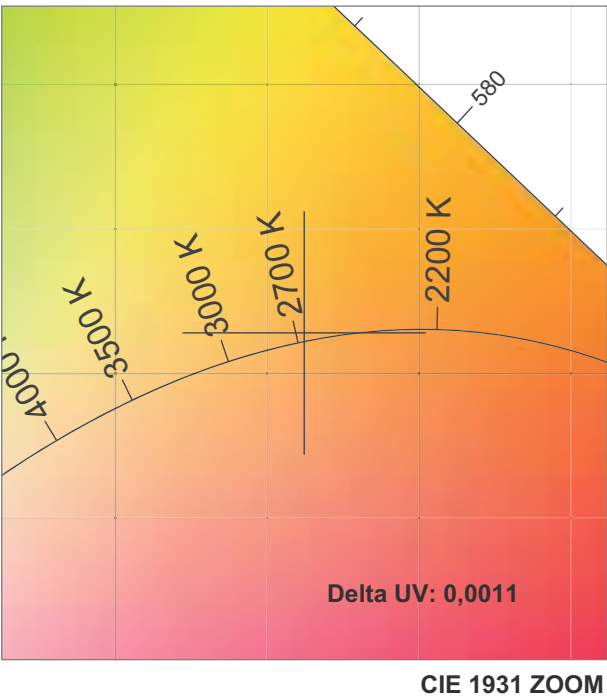
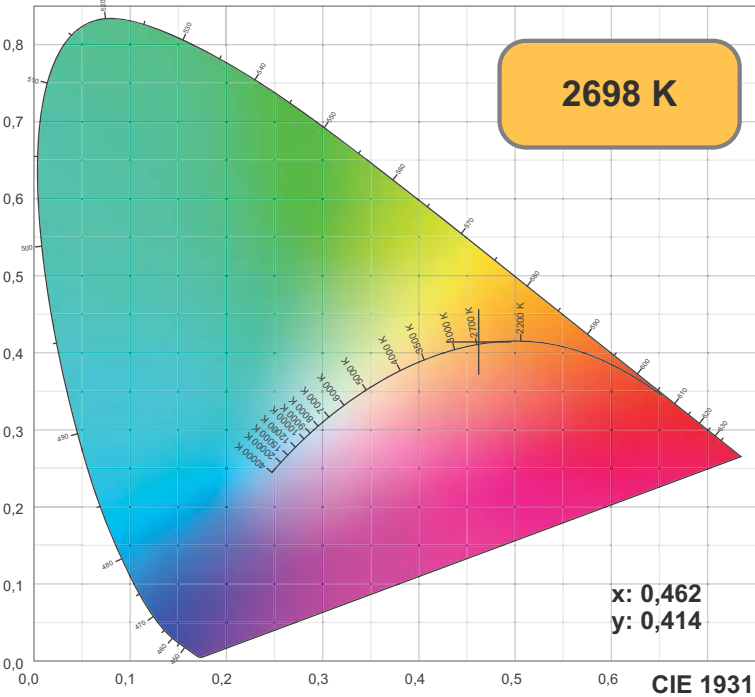
Color



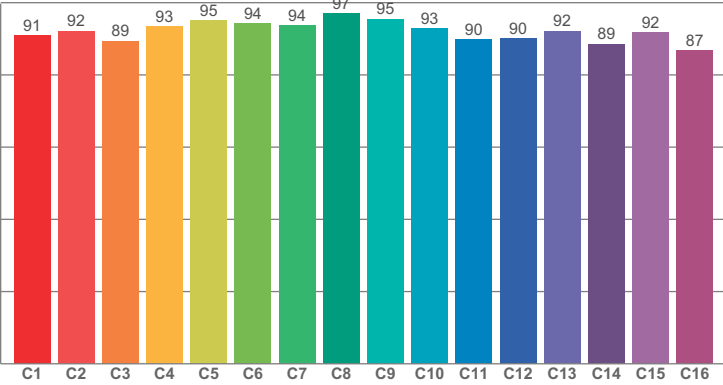
CIE1931
x: 0,462
y: 0,414

Spectra

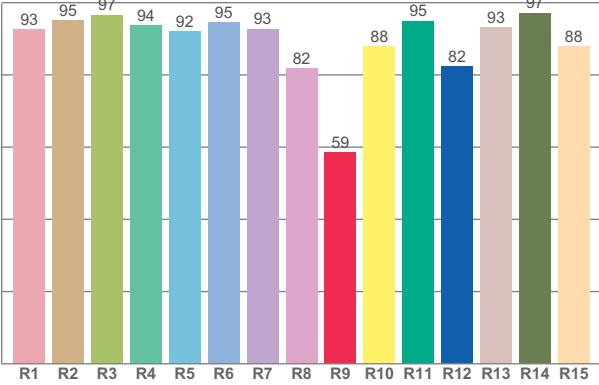




TM30: 92,0



CRI: 92,4 (R1-R8)



CRI R values, only R1-R8 are used to calculate final CRI value

R1	R2	R3	R4	R5	R6	R7	R8	R9	R10	R11	R12	R13	R14	R15
92,50	95,05	96,57	93,68	92,01	94,59	92,76	81,85	58,53	87,82	94,97	82,43	93,05	97,20	87,80

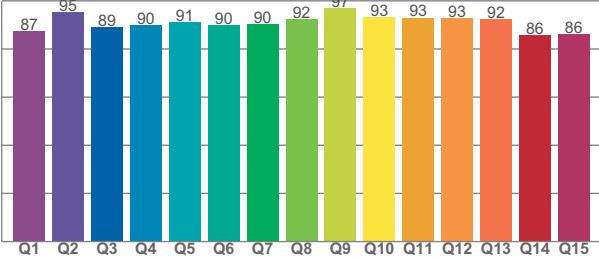
TM30 C values, 16 binned values out of total of 99 C values

C1	C2	C3	C4	C5	C6	C7	C8	C9	C10	C11	C12	C13	C14	C15	C16
90,99	92,21	89,45	93,37	95,03	94,34	93,79	96,99	95,48	92,95	89,90	90,02	92,16	88,60	91,79	86,72

CQS Q values

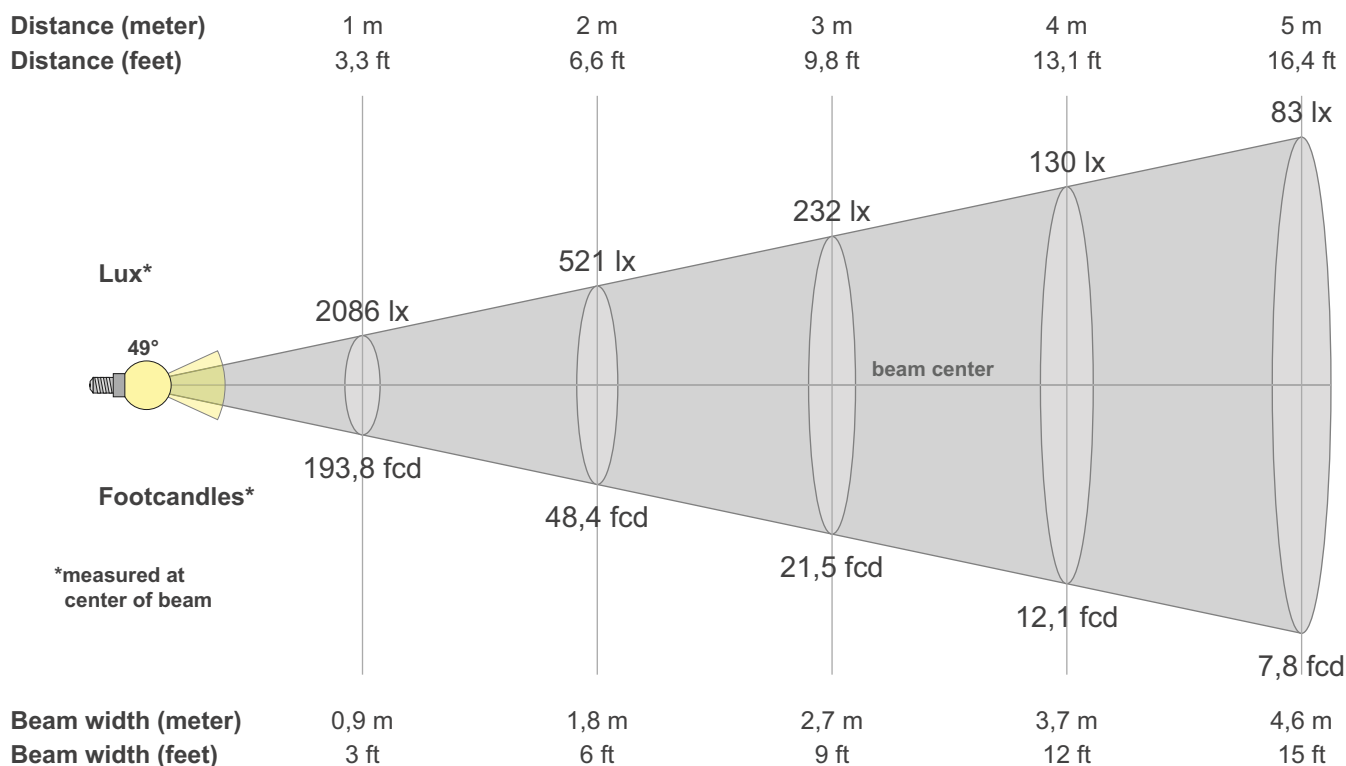
Q1	Q2	Q3	Q4	Q5	Q6	Q7	Q8	Q9	Q10	Q11	Q12	Q13	Q14	Q15
87,24	95,40	88,99	89,87	91,11	89,85	90,20	92,46	96,83	93,27	93,05	92,73	92,33	85,81	86,20

CQS: 90,3



Color parameters

CCT	CRI	CRI R9	TM30 Rf	TM30 Rg	CQS	x	y	u	v	Duv
2698 K	92,4	58,5	92,0	100,1	90,3	0,5	0,4	0,3	0,4	0,0011



Intensities in 0° c-plane

0°	2°	4°	6°	8°	10°	12°	14°	16°	18°	20°	22°	24°	26°	28°	30°	32°	34°	36°	38°
2086	2085	2088	2098	2105	2091	2047	1969	1856	1708	1531	1340	1126	886	647	447	302	208	150	113
100%	100%	100%	101%	101%	100%	98%	94%	89%	82%	73%	64%	54%	42%	31%	21%	14%	10%	7%	5%

Intensities in 90° c-plane

0°	2°	4°	6°	8°	10°	12°	14°	16°	18°	20°	22°	24°	26°	28°	30°	32°	34°	36°	38°
2086	2085	2088	2098	2105	2091	2047	1969	1856	1708	1531	1340	1126	886	647	447	302	208	150	113
100%	100%	100%	101%	101%	100%	98%	94%	89%	82%	73%	64%	54%	42%	31%	21%	14%	10%	7%	5%

Intensities in 180° c-plane

0°	2°	4°	6°	8°	10°	12°	14°	16°	18°	20°	22°	24°	26°	28°	30°	32°	34°	36°	38°
2086	2085	2088	2098	2105	2091	2047	1969	1856	1708	1531	1340	1126	886	647	447	302	208	150	113
100%	100%	100%	101%	101%	100%	98%	94%	89%	82%	73%	64%	54%	42%	31%	21%	14%	10%	7%	5%

Intensities in 270° c-plane

0°	2°	4°	6°	8°	10°	12°	14°	16°	18°	20°	22°	24°	26°	28°	30°	32°	34°	36°	38°
2086	2085	2088	2098	2105	2091	2047	1969	1856	1708	1531	1340	1126	886	647	447	302	208	150	113
100%	100%	100%	101%	101%	100%	98%	94%	89%	82%	73%	64%	54%	42%	31%	21%	14%	10%	7%	5%

Beam angle 50%	Field angle 10%	Cutoff angle 2,5%	Intensity ratio in 120° cone	Intensity ratio in 90° cone
49,2°	67,8°	87,7°	99,6%	97,6%