

Modular Multiples®

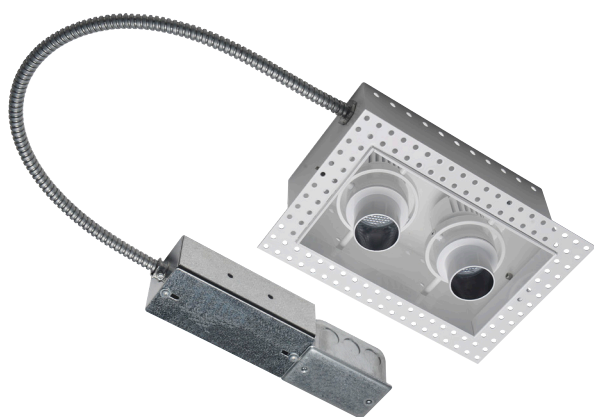
The Original Multiple Light Family of Fixtures

Trimless

Driver/Transformer Attached - Recessed - New/Old Work

For applications where ceilings are currently installed. An opening is cut into the ceiling material to fit the trimless mounting frame, which is secured with the appropriate hardware. Spackling compound is applied over the perforated flange and finished for a smooth appearance. Fixture wiring connections are made and fixture is inserted through the installed frame and sat in place on top of the frame and secured with provided hardware.

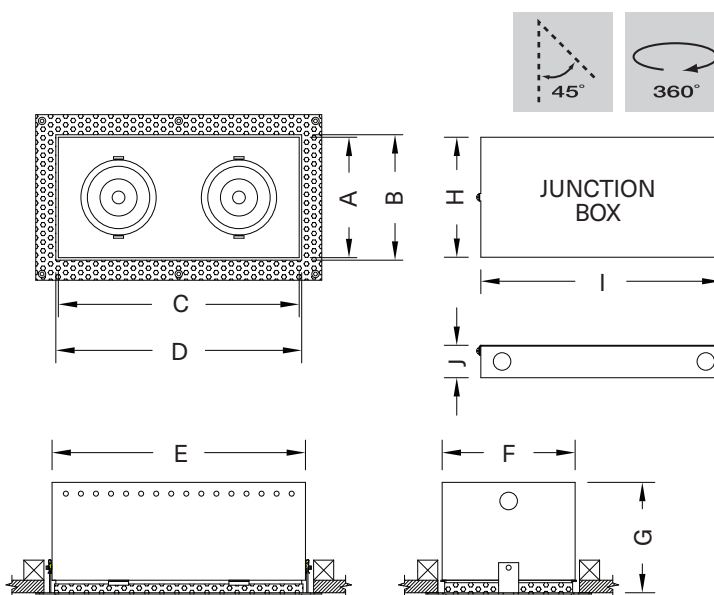
Two Light



MTLS-2-LED-512-20-27-1-TA-REC-AWNR-WH-CY

Modular Multiples® Trimless Series, two 12 watt LED modules, 2700°K, white housing, drivers/transformers attached, rectangular aperture, Lutron Athena Wireless Node-white, shielding cylinder configuration shown. Other configurations available.

[Download CSI drop-in spec template](#)



COMPATIBLE CEILING MATERIALS



LIGHTS and DIMENSIONS	A	B	C	D	E	F	G
LED-507, LED-508, LED-510, LED-511, LED-512	5" 127mm	5-1/4" 133mm	10" 254mm	10-1/4" 260mm	10-5/8" 270mm	5-5/8" 143mm	4-1/2" 114mm
LED-712, LED-714, LED-716, LED-720, LED-920, LED-926, LED-929, LED-932, LED-935	6" 152mm	6-1/4" 159mm	12" 305mm	12-1/4" 311mm	12-5/8" 321mm	6-5/8" 168mm	5-1/2" 140mm

Above measurements shown with 45° of adjustability. Certain driver options may alter housing dimensions. Contact factory for more details.

JUNCTION BOX	H	I	J
	6" 152mm	12" 305mm	1-5/8" 41mm

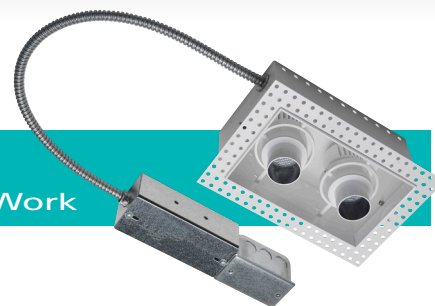
Modular International, Inc.
1-412-734-9000
www.modularinternational.com



REV. 05/01/23

Modular Multiples®

The Original Multiple Light Family of Fixtures



Trimless

Driver/Transformer Attached - Recessed - New/Old Work

Configurations: 1, 2, 3, 4 light sources standard, custom configurations available.

Housing: Fabricated 18 gauge steel housing with perforated spackle flange.

Finishes:

- Housing and ring sets powder coated – white or black standard.
- Custom colors available.
- Stainless steel / satin nickel available.

Electrical:

- One driver/transformer attached per light source for multi-circuit wiring.
- Phase, 0-10V, DALI-2, and DMX dimming options available. Please consult factory for available driver options.
- 120/277V available.
- Listed to UL1598 standards.

Light Sources: **579e LED Modules**

LED-507-20	LED-712-20	LED-920-35
LED-507-30	LED-712-30	LED-920-45
LED-507-40	LED-712-40	LED-920-60
LED-508-20	LED-712-55	LED-920-90
LED-508-30	LED-714-20	LED-926-35
LED-508-40	LED-714-30	LED-926-45
LED-510-20	LED-714-40	LED-926-60
LED-510-30	LED-714-55	LED-926-90
LED-510-40	LED-716-20	LED-929-35
LED-511-20	LED-716-30	LED-929-45
LED-511-30	LED-716-40	LED-929-60
LED-511-40	LED-716-55	LED-929-90
LED-512-20	LED-720-20	LED-932-35
LED-512-30	LED-720-30	LED-932-45
LED-512-40	LED-720-40	LED-932-60
	LED-720-55	LED-932-90
		LED-935-35
		LED-935-45
		LED-935-60
		LED-935-90

LED legacy light source replacements:

MR16LED (-BLD)	PAR30LED (-GLD)
AR111LED (-DLD)	PAR38LED (-JLD)

Mounting:

- For applications where ceilings are currently installed.
- An opening is cut into the ceiling material to fit the trimless mounting frame, which is secured with the appropriate hardware.
- Spackling compound is applied over the perforated flange and finished for a smooth appearance.
- Fixture wiring connections are made and fixture is inserted through the installed frame and sat in place on top of the frame and secured with provided hardware.

Options:

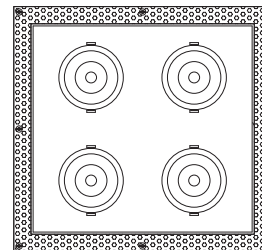
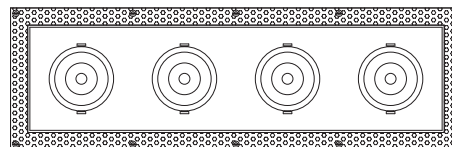
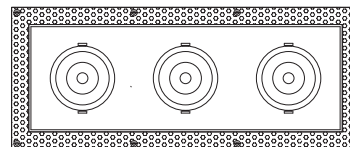
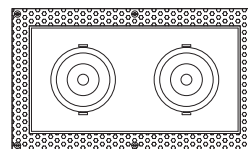
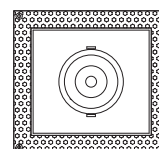
- Patented aluminum ring sets and locking devices.
- Pull down yokes.
- Filter rings and shielding cylinders.
- Filter media: up to two 1/8" (3mm) thick filter per light source.
- Lutron Athena Wireless Node (white or black finish available).

Model # example:

MTLS-2-LED-512-20-27-1-TA-REC-AWNR-WH

- Lutron Athena Wireless Node: White (-AWNR-WH), Black (AWNR-BL)
- Aperture: rectangular (REC), round (RD), square (SQ)
- Driver/transformer attached (TA), primary voltage (PV)
- Color: white (1), black (2), chrome (4), stainless steel (6), custom (x)
- Selected Kelvin temperature: 2700°K (27), 3000°K (30), 3500°K (35), 4000°K (40)
- Light sources: see above list
- Number of light sources
- Modular Multiples® Trimless Series

[Download CSI drop-in spec template](#)



Modular Multiples®

The Original Multiple Light Family of Fixtures



579e Available LED Modules

Model Number	Watts	Beam Angle	CRI	Lumens	Lumens per watt
LED-507-20	7	20°	90+	798	114
LED-507-30	7	30°	90+	758	108
LED-507-40	7	40°	90+	761	109
LED-508-20	8	20°	90+	1,060	133
LED-508-30	8	30°	90+	988	124
LED-508-40	8	40°	90+	1,001	125
LED-510-20	10	20°	90+	1,245	125
LED-510-30	10	30°	90+	1,177	118
LED-510-40	10	40°	90+	1,189	119
LED-511-20	11	20°	90+	1,362	124
LED-511-30	11	30°	90+	1,289	117
LED-511-40	11	40°	90+	1,309	119
LED-512-20	12	20°	90+	1,458	122
LED-512-30	12	30°	90+	1,385	115
LED-512-40	12	40°	90+	1,407	117
LED-712-20	12	20°	90+	1,591	133
LED-712-30	12	30°	90+	1,580	132
LED-712-40	12	40°	90+	1,513	126
LED-712-55	12	55°	90+	1,557	130
LED-714-20	14	20°	90+	1,885	135
LED-714-30	14	30°	90+	1,858	133
LED-714-40	14	40°	90+	1,780	127
LED-714-55	14	55°	90+	1,834	131
LED-716-20	16	20°	90+	2,203	138
LED-716-30	16	30°	90+	2,174	136
LED-716-40	16	40°	90+	2,080	130
LED-716-55	16	55°	90+	2,149	134
LED-720-20	20	20°	90+	2,650	133
LED-720-30	20	30°	90+	2,583	129
LED-720-40	20	40°	90+	2,462	123
LED-720-55	20	55°	90+	2,554	128
LED-920-35	20	35°	90+	3,028	151
LED-920-45	20	45°	90+	2,993	150
LED-920-60	20	60°	90+	3,019	151
LED-920-90	20	90°	90+	3,112	156
LED-926-35	26	35°	90+	3,868	149
LED-926-45	26	45°	90+	3,813	147
LED-926-60	26	60°	90+	3,871	149
LED-926-90	26	90°	90+	3,985	153
LED-929-35	29	35°	90+	4,264	147
LED-929-45	29	45°	90+	4,190	144
LED-929-60	29	60°	90+	4,272	147
LED-929-90	29	90°	90+	4,406	152
LED-932-35	32	35°	90+	4,645	145
LED-932-45	32	45°	90+	4,575	143
LED-932-60	32	60°	90+	4,652	145
LED-932-90	32	90°	90+	4,819	151
LED-935-35	35	35°	90+	5,034	144
LED-935-45	35	45°	90+	4,986	142
LED-935-60	35	60°	90+	5,095	146
LED-935-90	35	90°	90+	5,224	149

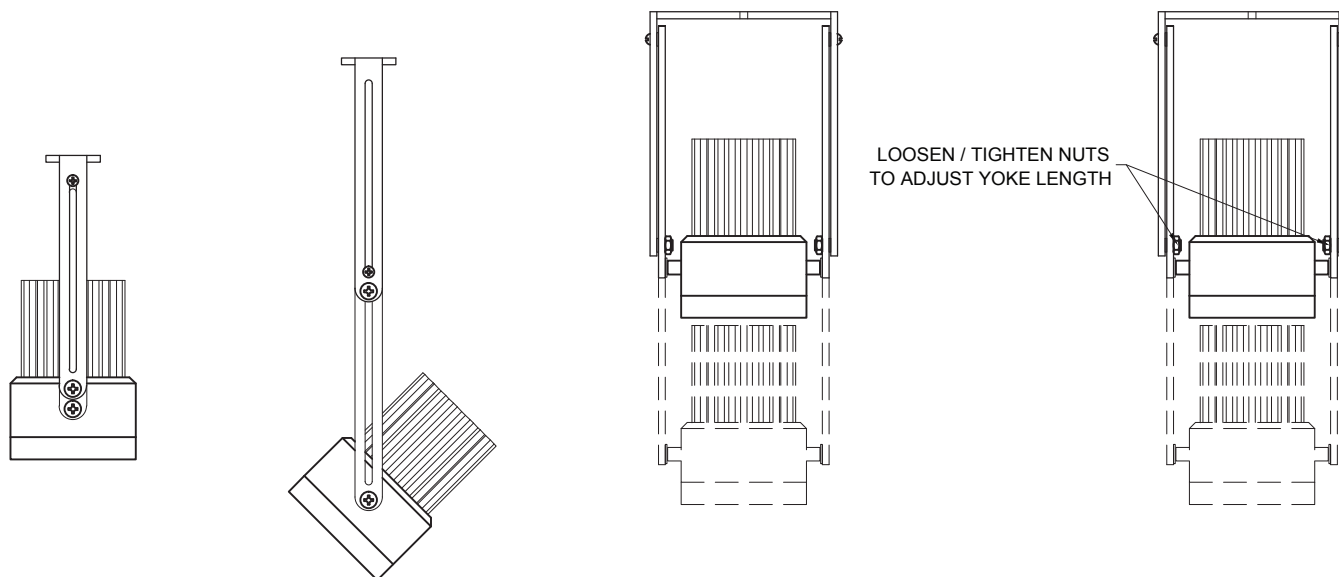
Modular Multiples®

The Original Multiple Light Family of Fixtures

Fixture Options

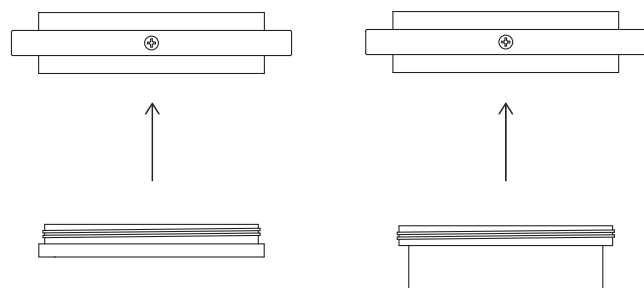
Extendable Yokes

ADD -EY TO END OF MODEL NUMBER



Shielding Options

ADD SHIELDING OPTION CODE (BELOW) TO END OF MODEL NUMBER



FILTER RING (STANDARD)

SHIELDING CYLINDER (-CY)

Lutron Athena Wireless Nodes



ATHENA WIRELESS NODE
WHITE (AWN-WH)

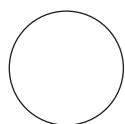


ATHENA WIRELESS NODE
BLACK (AWN-BL)

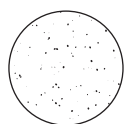
Filter Media

ADD FILTER MEDIA CODE (BELOW) TO END OF MODEL NUMBER

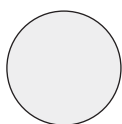
CLEAR GLASS (-CG)



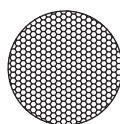
DIFFUSING SPREAD (-DS)



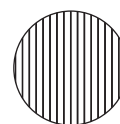
SATIN ETCHED (-SE)



HEXCELL LOUVER (-HL)



LINEAR SPREAD (-LS)



PRISMATIC WIDE SPREAD (-PS)

