

Modular Multiples®

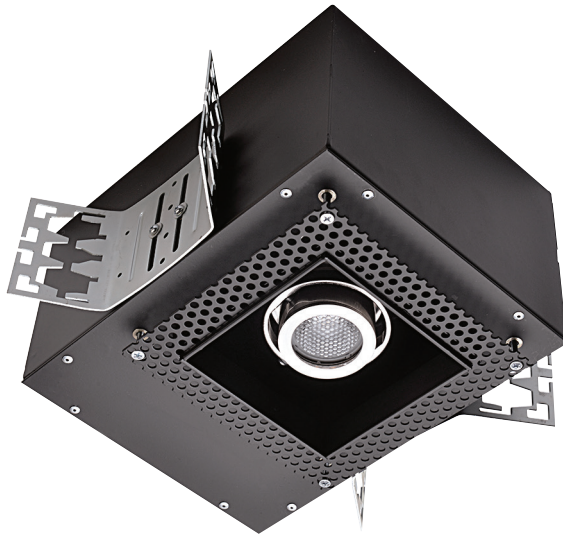
The Original Multiple Light Family of Fixtures

Trimless

Driver/Transformer Incorporated - Recessed - New Work

For new construction applications. Recessed housing is installed via adjustable universal mounting brackets and bar hangers prior to the installation of drywall. Once drywall is installed, the trimless mounting frame is secured to the housing. Spackling compound is applied over the perforated flange and finished for a smooth appearance.

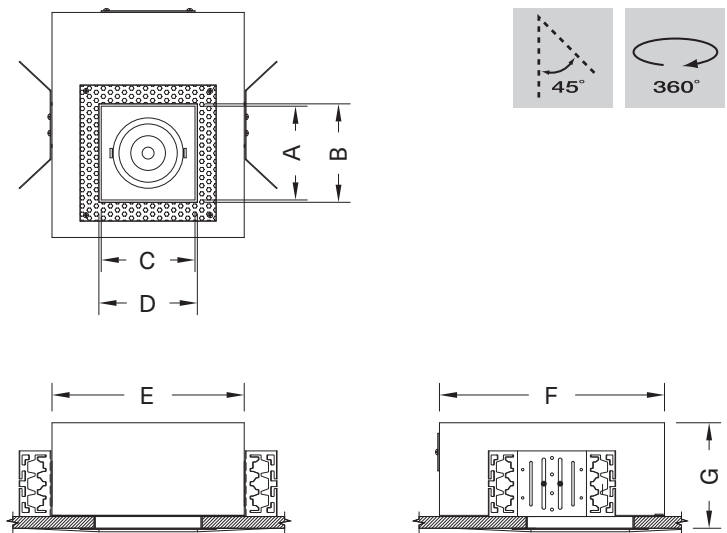
One Light



MTLS-1-LED-512-20-27-2-TI-SQ-AWNR-BL

Modular Multiples® Trimless Series, one 12 watt LED module, 2700°K, black housing, driver/transformer incorporated, square aperture, Lutron Athena Wireless Node-black configuration shown. Other configurations available.

[Download CSI drop-in spec template](#)



COMPATIBLE CEILING MATERIALS



| LIGHTS and DIMENSIONS | A | B | C | D | E | F | G |
|---|-------------|-----------------|-------------|-----------------|------------------|------------------|-----------------|
| LED-507, LED-508, LED-510, LED-511, LED-512 | 4" 102mm | 4-1/4" 108mm | 4" 102mm | 4-1/4" 108mm | 8" 203mm | 10-1/2" 267mm | 5-5/8" 143mm |
| LED-712, LED-714, LED-716, LED-720, LED-920, LED-926, LED-929, LED-932, LED-935 | 5" 127mm | 5-1/4" 133mm | 5" 127mm | 5-1/4" 133mm | 10-1/4" 260mm | 12" 305mm | 5-5/8" 143mm |

Above measurements shown with 45° of adjustability. Certain driver options may alter housing dimensions. Contact factory for more details.

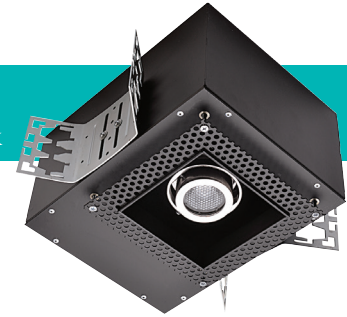


Modular Multiples®

The Original Multiple Light Family of Fixtures

Trimless

Driver/Transformer Incorporated - Recessed - New Work



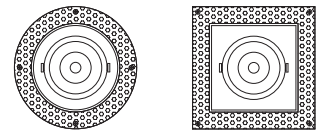
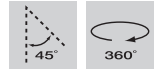
- Configurations:**
- 1, 2, 3, 4 light sources standard.
 - Custom configurations available.

- Housing:**
- Fabricated 18 gauge steel housing with perforated spackle flange.
 - Available for airtight or IC rated applications.

- Finishes:**
- Housing and ring sets powder coated – white or black standard.
 - Custom colors available.
 - Stainless steel / satin nickel available.

- Electrical:**
- One driver/transformer incorporated per light source for multi-circuit wiring.
 - Phase, 0-10V, DALI-2, and DMX dimming options available. Consult factory for available driver options.
 - 120/277V available.
 - Listed to UL1598 standards.

[Download CSI drop-in spec template](#)

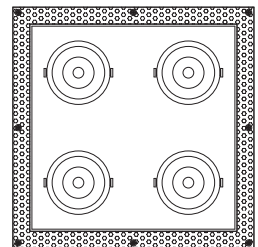
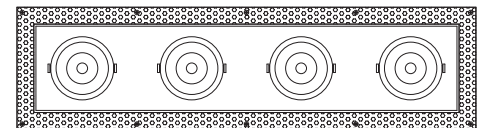
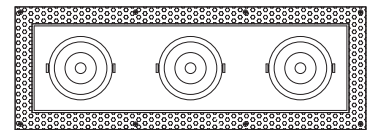
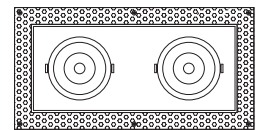


Light Sources: 579e LED Modules

| | | |
|------------|------------|------------|
| LED-507-20 | LED-712-20 | LED-920-35 |
| LED-507-30 | LED-712-30 | LED-920-45 |
| LED-507-40 | LED-712-40 | LED-920-60 |
| LED-508-20 | LED-712-55 | LED-920-90 |
| LED-508-30 | LED-714-20 | LED-926-35 |
| LED-508-40 | LED-714-30 | LED-926-45 |
| LED-510-20 | LED-714-40 | LED-926-60 |
| LED-510-30 | LED-714-55 | LED-926-90 |
| LED-510-40 | LED-716-20 | LED-929-35 |
| LED-511-20 | LED-716-30 | LED-929-45 |
| LED-511-30 | LED-716-40 | LED-929-60 |
| LED-511-40 | LED-716-55 | LED-929-90 |
| LED-512-20 | LED-720-20 | LED-932-35 |
| LED-512-30 | LED-720-30 | LED-932-45 |
| LED-512-40 | LED-720-40 | LED-932-60 |
| | LED-720-55 | LED-932-90 |
| | | LED-935-35 |
| | | LED-935-45 |
| | | LED-935-60 |
| | | LED-935-90 |

LED legacy light source replacements:

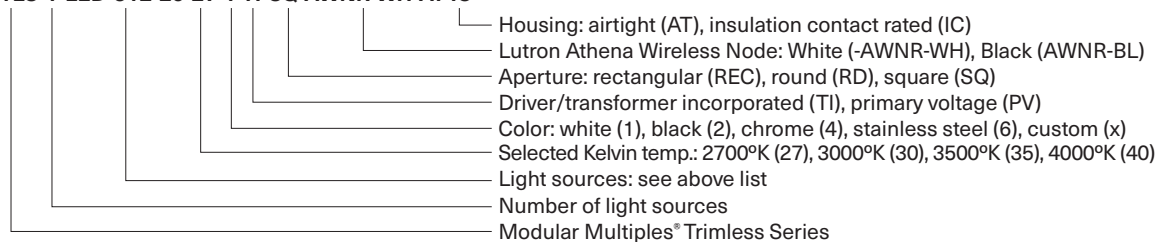
| | |
|-----------------|-----------------|
| MR16LED (-BLD) | PAR30LED (-GLD) |
| AR111LED (-DLD) | PAR38LED (-JLD) |



- Mounting:**
- For new construction applications.
 - Recessed housing installed via adjustable universal mounting brackets and bar hangers prior to the installation of drywall.
 - After drywall installation, perforated flange is secured to the housing.
 - Spackling compound is applied over flange for finished appearance.

- Options:**
- Patented aluminum ring sets and locking devices.
 - Pull down yokes.
 - Filter rings and shielding cylinders.
 - Filter media: up to two 1/8" (3mm) thick filter per light source.
 - Lutron Athena Wireless Node (white or black finish available).

Model # example: MTL5-1-LED-512-20-27-1-TI-SQ-AWNR-WH-AT-IC



Modular Multiples®

The Original Multiple Light Family of Fixtures



579 Available LED Modules

| Model Number | Watts | Beam Angle | CRI | Lumens | Lumens per watt |
|--------------|-------|------------|-----|--------|-----------------|
| LED-507-20 | 7 | 20° | 90+ | 798 | 114 |
| LED-507-30 | 7 | 30° | 90+ | 758 | 108 |
| LED-507-40 | 7 | 40° | 90+ | 761 | 109 |
| LED-508-20 | 8 | 20° | 90+ | 1,060 | 133 |
| LED-508-30 | 8 | 30° | 90+ | 988 | 124 |
| LED-508-40 | 8 | 40° | 90+ | 1,001 | 125 |
| LED-510-20 | 10 | 20° | 90+ | 1,245 | 125 |
| LED-510-30 | 10 | 30° | 90+ | 1,177 | 118 |
| LED-510-40 | 10 | 40° | 90+ | 1,189 | 119 |
| LED-511-20 | 11 | 20° | 90+ | 1,362 | 124 |
| LED-511-30 | 11 | 30° | 90+ | 1,289 | 117 |
| LED-511-40 | 11 | 40° | 90+ | 1,309 | 119 |
| LED-512-20 | 12 | 20° | 90+ | 1,458 | 122 |
| LED-512-30 | 12 | 30° | 90+ | 1,385 | 115 |
| LED-512-40 | 12 | 40° | 90+ | 1,407 | 117 |
| LED-712-20 | 12 | 20° | 90+ | 1,591 | 133 |
| LED-712-30 | 12 | 30° | 90+ | 1,580 | 132 |
| LED-712-40 | 12 | 40° | 90+ | 1,513 | 126 |
| LED-712-55 | 12 | 55° | 90+ | 1,557 | 130 |
| LED-714-20 | 14 | 20° | 90+ | 1,885 | 135 |
| LED-714-30 | 14 | 30° | 90+ | 1,858 | 133 |
| LED-714-40 | 14 | 40° | 90+ | 1,780 | 127 |
| LED-714-55 | 14 | 55° | 90+ | 1,834 | 131 |
| LED-716-20 | 16 | 20° | 90+ | 2,203 | 138 |
| LED-716-30 | 16 | 30° | 90+ | 2,174 | 136 |
| LED-716-40 | 16 | 40° | 90+ | 2,080 | 130 |
| LED-716-55 | 16 | 55° | 90+ | 2,149 | 134 |
| LED-720-20 | 20 | 20° | 90+ | 2,650 | 133 |
| LED-720-30 | 20 | 30° | 90+ | 2,583 | 129 |
| LED-720-40 | 20 | 40° | 90+ | 2,462 | 123 |
| LED-720-55 | 20 | 55° | 90+ | 2,554 | 128 |
| LED-920-35 | 20 | 35° | 90+ | 3,028 | 151 |
| LED-920-45 | 20 | 45° | 90+ | 2,993 | 150 |
| LED-920-60 | 20 | 60° | 90+ | 3,019 | 151 |
| LED-920-90 | 20 | 90° | 90+ | 3,112 | 156 |
| LED-926-35 | 26 | 35° | 90+ | 3,868 | 149 |
| LED-926-45 | 26 | 45° | 90+ | 3,813 | 147 |
| LED-926-60 | 26 | 60° | 90+ | 3,871 | 149 |
| LED-926-90 | 26 | 90° | 90+ | 3,985 | 153 |
| LED-929-35 | 29 | 35° | 90+ | 4,264 | 147 |
| LED-929-45 | 29 | 45° | 90+ | 4,190 | 144 |
| LED-929-60 | 29 | 60° | 90+ | 4,272 | 147 |
| LED-929-90 | 29 | 90° | 90+ | 4,406 | 152 |
| LED-932-35 | 32 | 35° | 90+ | 4,645 | 145 |
| LED-932-45 | 32 | 45° | 90+ | 4,575 | 143 |
| LED-932-60 | 32 | 60° | 90+ | 4,652 | 145 |
| LED-932-90 | 32 | 90° | 90+ | 4,819 | 151 |
| LED-935-35 | 35 | 35° | 90+ | 5,034 | 144 |
| LED-935-45 | 35 | 45° | 90+ | 4,986 | 142 |
| LED-935-60 | 35 | 60° | 90+ | 5,095 | 146 |
| LED-935-90 | 35 | 90° | 90+ | 5,224 | 149 |

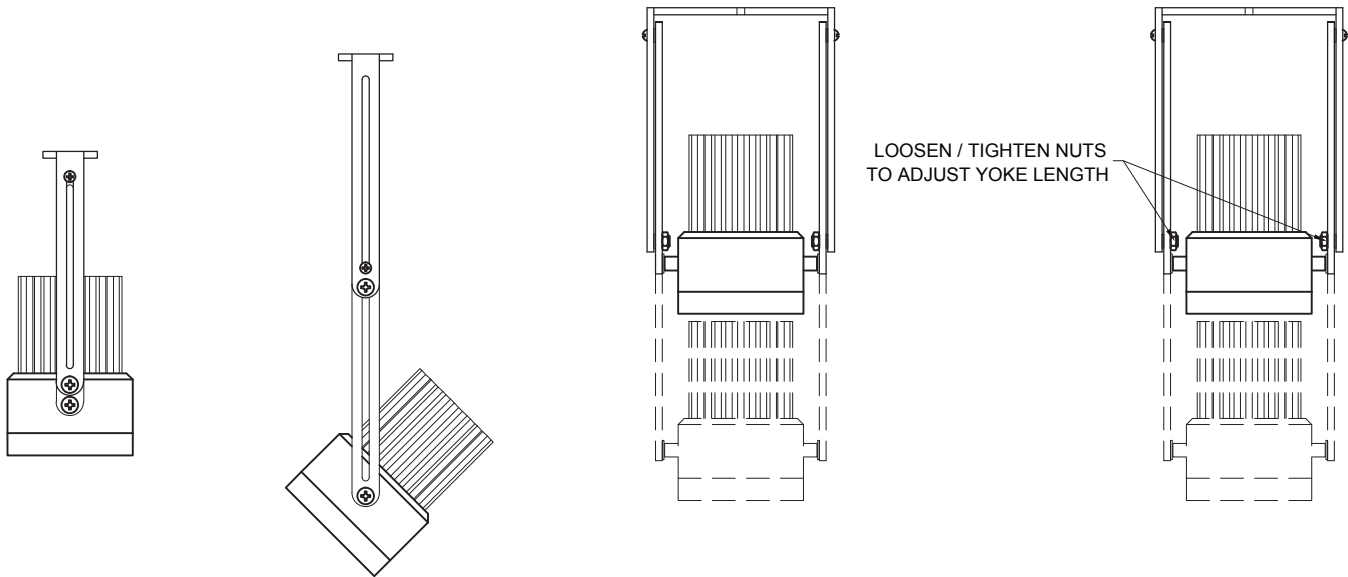
Modular Multiples®

The Original Multiple Light Family of Fixtures

Fixture Options

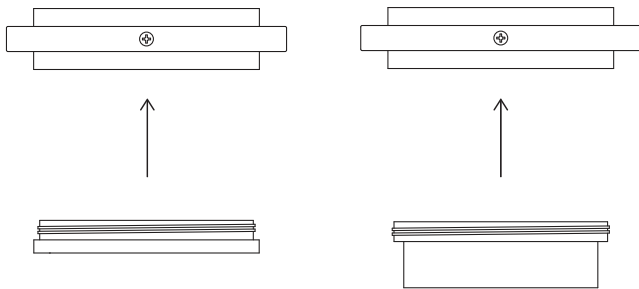
Extendable Yokes

ADD -EY TO END OF MODEL NUMBER



Shielding Options

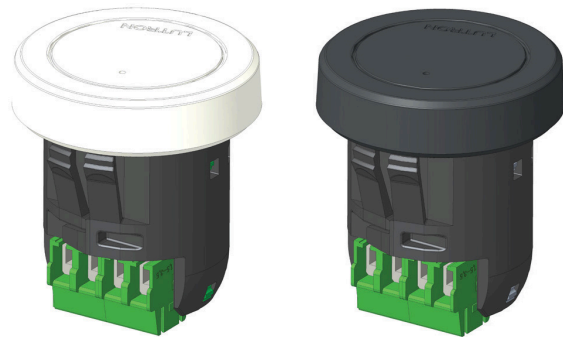
ADD SHIELDING OPTION CODE (BELOW) TO END OF MODEL NUMBER



FILTER RING (STANDARD)

SHIELDING CYLINDER (-CY)

Lutron Athena Wireless Nodes



ATHENA WIRELESS NODE
WHITE (AWN-WH)

ATHENA WIRELESS NODE
BLACK (AWN-BL)

Filter Media

ADD FILTER MEDIA CODE (BELOW) TO END OF MODEL NUMBER

