

Modular Multiples®

Solid®
Surface Mounted
New/Old Work



This leaflet contains products covered under one or more of the following US Patent Numbers:

6,568,826B1	6,692,139B2
6,820,999B2	7,207,698B2
6,896,391B2	6,969,182B2
6,997,267B2	6,997,574B2
7,036,953B2	6,745,785B2
7,300,176B2	7,478,921B1
D520,666S	D530,038S
D537,553S	D819,857
D818,632	D818,624
D818,623	8,740,407
8,511,860	8,231,242
8,210,720	7,832,907

Modular International, Inc. produced a major portion of the lighting for the project shown. The photograph, however, is not intended to imply that the various owners of the projects endorse our products or use our products exclusively.

Modular International Inc.
3941 California Avenue
Pittsburgh, PA 15212
1-412-734-9000
www.modularinternational.com

Modular Multiples®

The Original Multiple Lamp Family of Fixtures

5

Solid

Surface Mounted - New/Old Work



- Configurations:**
- 1, 2, 3, 4 light configurations standard
 - Round apertures standard
 - Custom configurations available

- Housing:**
- Extruded aluminum body
 - 14 gauge steel face plate

- Finishes:**
- Powder coated - white, black or aluminum standard
 - Custom colors available
 - Stainless steel / satin nickel available

- Electrical:**
- Internal electronic power supply(s) /transformer(s) / ballast(s)
 - Dimmable (not applicable on HID products)
 - One power supply / transformer per lamp allowing for multi-circuit wiring.
 - 120v and 277v available
 - Listed to UL1598 standards

Lamping:

Standard LED Modules

6w LED-506-6	12w LED-512-12	12w LED-512-22
8w LED-708-6	14w LED-714-12	14w LED-714-22
16w LED-716-12	16w LED-716-22	16w LED-716-45
30w LED-930-12	30w LED-930-22	30w LED-930-45

Direct Replacement LED or Legacy Lamps:

MR16LED (BLD)	MR16 HALOGEN (B)	MR16CMH (BH)
AR111LED (DLD)	AR111 HALOGEN (D)	CDMR111 (S)
PAR30LED (GLD)	PAR30 (G)	PAR30HID (H)
PAR38LED (JLD)	PAR38 (J)	PAR38HID (K)

Mounting:

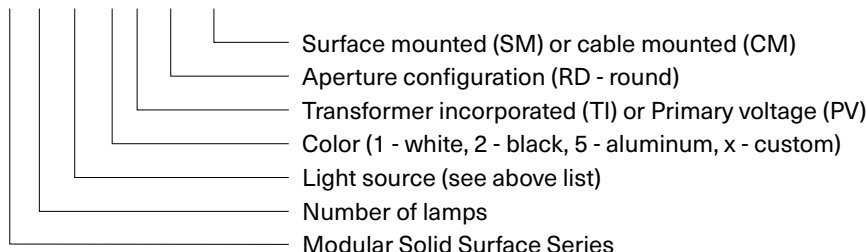
- For applications where ceilings are currently installed.
- Can be wall, ceiling, canopy or pendent mounted with 1/16" braided stainless steel cables.
- Secure to ceiling or wall structure with the appropriate hardware.

Options:

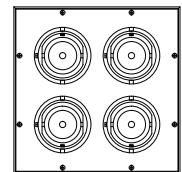
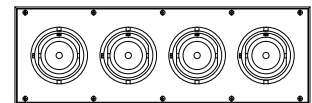
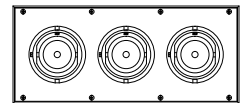
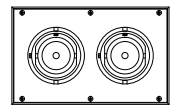
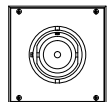
- Patented die-cast aluminum ring sets and locking devices
- Pull down yokes
- Shielding cones
- Filter media
 - LED modules accept one 1/8" thick filter
 - LED direct replacement and legacy lamps accept up to two 1/8" thick filters

**Model #
example:**

MS-2-JLD-2-TI-RD-SM



[Download CSI
drop-in spec template](#)



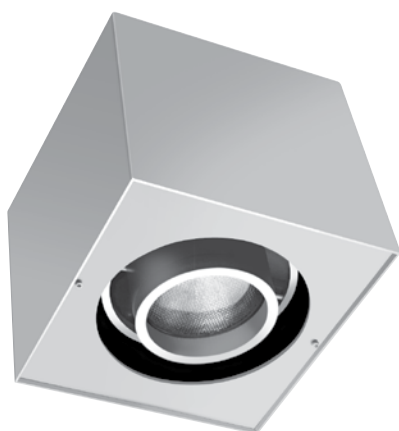
Modular Multiples®

Solid

Surface Mounted - New/Old Work

Outstanding flexibility and design excellence in surface mounted configurations for applications where ceilings are currently installed. Fixtures can be wall, ceiling, canopy or pendent mounted with 1/16" braided stainless steel cables.

One Lamp

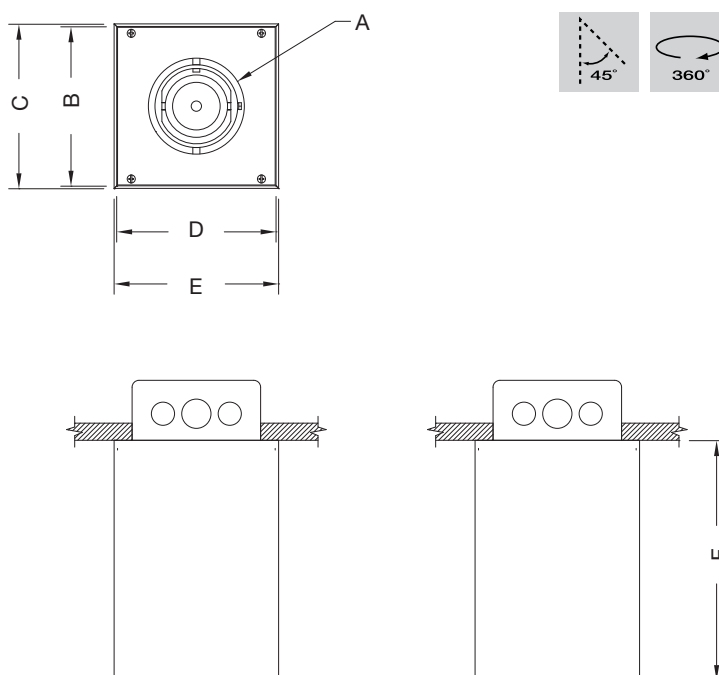


MS-1-JLD-1-TI-RD-SM

Modular Multiples® Surface Solid Series, one PAR38 LED lamp, white housing, transformer incorporated, round aperture, surface mounted configuration.

Other configurations available.

[Download CSI drop-in spec template](#)



LAMPS and DIMENSIONS	A	B	C	D	E	F
LED506, LED513 / MR16LED / MR16	Ø3-1/2" Ø89mm	5-13/16" 148mm	6" 152mm	5-13/16" 148mm	6" 152mm	8-3/4" 222mm
LED708, 714, 716, 930 / AR111LED / AR111	Ø6-1/2" Ø165mm	8-13/16" 224mm	9" 229mm	8-13/16" 224mm	9" 229mm	8-3/4" 222mm
PAR38LED / PAR38	Ø7" Ø178mm	9-13/16" 249mm	10" 254mm	9-13/16" 249mm	10" 254mm	8-3/4" 222mm

Modular Multiples®

Solid

Surface Mounted - New/Old Work

Outstanding flexibility and design excellence in surface mounted configurations for applications where ceilings are currently installed. Can be wall, ceiling, canopy or pendent mounted with 1/16" braided stainless steel cables.

Two Lamp

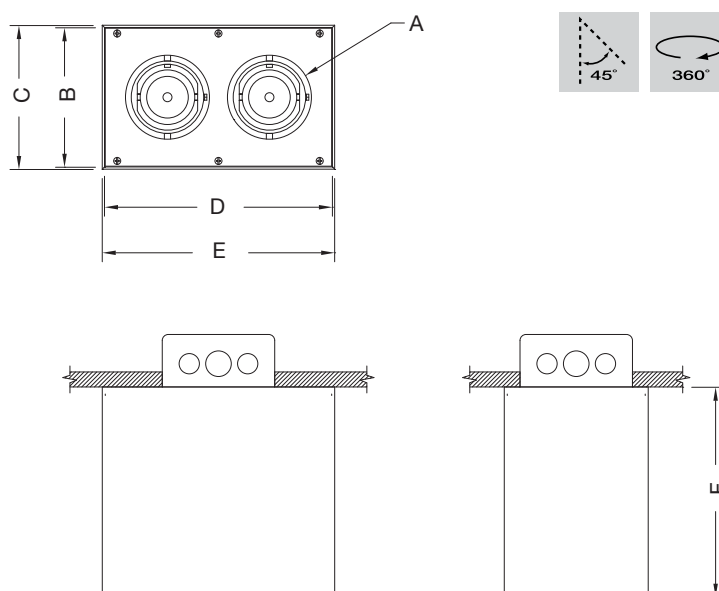


MS-2-JLD-2-TI-RD-SM

Modular Multiples® Surface Solid Series, two PAR38 LED lamps, black housing, transformer incorporated, round aperture, surface mounted configuration.

Other configurations available.

[Download CSI drop-in spec template](#)



LAMPS and DIMENSIONS	A	B	C	D	E	F
LED506, LED513 / MR16LED / MR16	Ø3-1/2" Ø89mm	5-13/16" 148mm	6" 152mm	9-1/2" 241mm	9-11/16" 246mm	8-3/4" 222mm
LED708, 714, 716, 930 / AR111LED / AR111	Ø6-1/2" Ø165mm	8-13/16" 224mm	9" 229mm	1'4-1/16" 408mm	1'4-1/4" 413mm	8-3/4" 222mm
PAR38LED / PAR38	Ø7" Ø178mm	9-13/16" 249mm	10" 254mm	1'7-5/16" 495mm	1'7-1/2" 495mm	8-3/4" 222mm

Modular Multiples®

Solid

Surface Mounted - New/Old Work

Outstanding flexibility and design excellence in surface mounted configurations for applications where ceilings are currently installed. Can be wall, ceiling, canopy or pendent mounted with 1/16" braided stainless steel cables.

Three Lamp

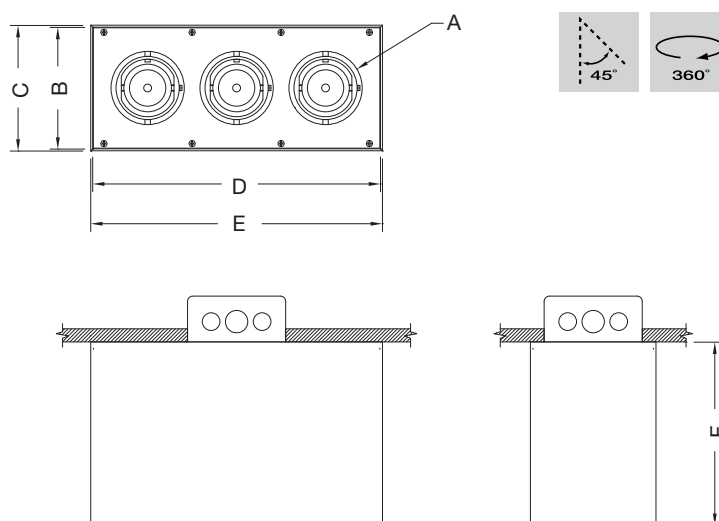


MS-3-JLD-1-TI-RD-SM

Modular Multiples® Surface Solid Series, three PAR38 LED lamps, white housing, transformer incorporated, round aperture, surface mounted configuration.

Other configurations available.

[Download CSI drop-in spec template](#)



LAMPS and DIMENSIONS	A	B	C	D	E	F
LED506, LED513 / MR16LED / MR16	Ø3-1/2" Ø89mm	5-13/16" 148mm	6" 152mm	1'1-3/4" 349mm	1'1-15/16" 354mm	8-3/4" 222mm
LED708, 714, 716, 930 / AR111LED / AR111	Ø6-1/2" Ø165mm	8-13/16" 224mm	9" 229mm	1'11-5/16" 592mm	1'11-1/2" 597mm	8-3/4" 222mm
PAR38LED / PAR38	Ø7" Ø178mm	9-13/16" 249mm	10" 254mm	2'4-13/16" 732mm	2'5" 737mm	8-3/4" 222mm

Modular Multiples®

Solid

Surface Mounted - New/Old Work

Outstanding flexibility and design excellence in surface mounted configurations for applications where ceilings are currently installed. Can be wall, ceiling, canopy or pendent mounted with 1/16" braided stainless steel cables.

Four Lamp

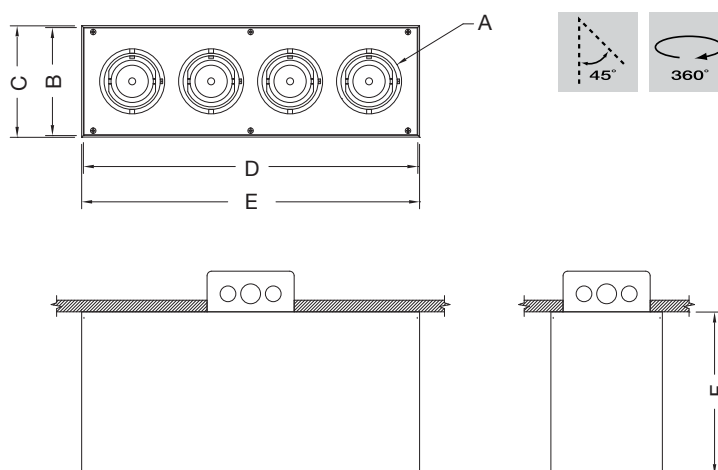


MS-4-JLD-1-TI-RD-SM

Modular Multiples® Surface Solid Series, four PAR38 LED lamps, white housing, transformer incorporated, round aperture, surface mounted configuration.

Other configurations available.

[Download CSI drop-in spec template](#)



LAMPS and DIMENSIONS	A	B	C	D	E	F
LED506, LED513 / MR16LED / MR16	Ø3-1/2" Ø89mm	5-13/16" 148mm	6" 152mm	1'6" 457mm	1'6-3/16" 462mm	8-3/4" 222mm
LED708, 714, 716, 930 / AR111LED / AR111	Ø6-1/2" Ø165mm	8-13/16" 224mm	9" 229mm	2'6-9/16" 776mm	2'6-3/4" 781mm	8-3/4" 222mm
PAR38LED / PAR38	Ø7" Ø178mm	9-13/16" 249mm	10" 254mm	3'2-5/16" 973mm	3'2-1/2" 978mm	8-3/4" 222mm

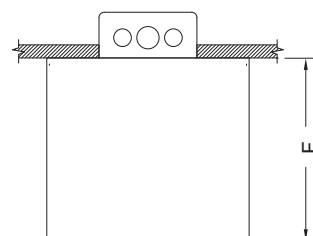
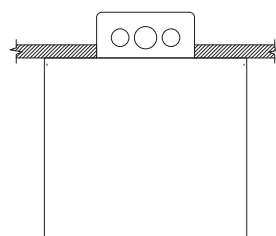
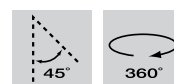
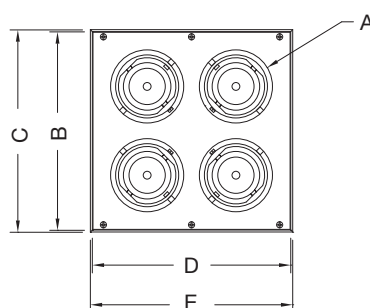
Modular Multiples®

Solid

Surface Mounted - New/Old Work

Outstanding flexibility and design excellence in surface mounted configurations for applications where ceilings are currently installed. Can be wall, ceiling, canopy or pendent mounted with 1/16" braided stainless steel cables.

Four Lamp Square



MS-4-JLD-1-TI-RDSQ-SM

Modular Multiples® Surface Solid Series, four PAR38 LED lamps, white housing, transformer incorporated, round apertures in square arrangement, surface mounted configuration. Other configurations available.

[Download CSI drop-in spec template](#)

LAMPS and DIMENSIONS	A	B	C	D	E	F
LED506, LED513 / MR16LED / MR16	Ø3-1/2" Ø89mm	9-1/2" 241mm	9-11/16" 246mm	9-1/2" 241mm	9-11/16" 246mm	8-3/4" 222mm
LED708, 714, 716, 930 / AR111LED / AR111	Ø6-1/2" Ø165mm	1'4-1/16" 408mm	1'4-1/4" 413mm	1'4-1/16" 408mm	1'4-1/4" 413mm	8-3/4" 222mm
PAR38LED / PAR38	Ø7" Ø178mm	1'7-5/16" 491mm	1'7-1/2" 495mm	1'7-5/16" 491mm	1'7-1/2" 495mm	8-3/4" 222mm

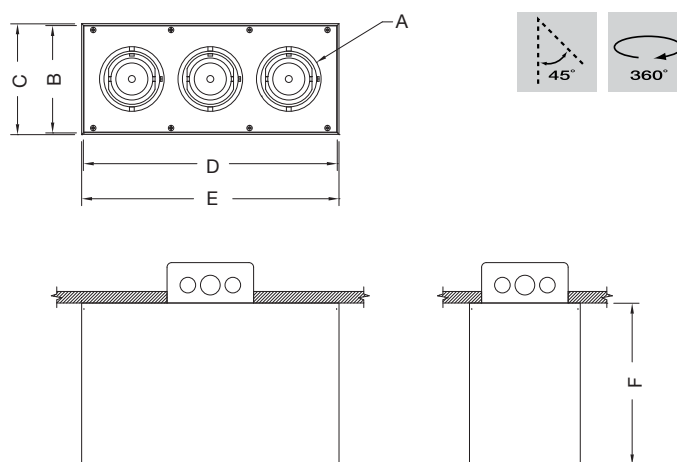
Modular Multiples®

Solid

Surface Mounted - New/Old Work

Outstanding flexibility and design excellence in surface mounted configurations for applications where ceilings are currently installed. Can be wall, ceiling, canopy or pendent mounted with 1/16" braided stainless steel cables.

Custom Mixed Lamp



MS-2D/1H-1-TI-RD-SM

Modular Multiples® Surface Solid Series, custom two AR111 lamps, one PAR30HID lamp, white housing, transformer incorporated, round aperture, surface mounted configuration. Other configurations available.

[Download CSI drop-in spec template](#)

LAMPS and DIMENSIONS	A	B	C	D	E	F
LED506, LED513 / MR16LED / MR16	Ø3-1/2" Ø89mm	5-13/16" 148mm	6" 152mm	1'1-3/4" 349mm	1'1-15/16" 354mm	8-3/4" 222mm
LED708, 714, 716, 930 / AR111LED / AR111	Ø6-1/2" Ø165mm	8-13/16" 224mm	9" 229mm	1'11-5/16" 592mm	1'11-1/2" 597mm	8-3/4" 222mm
PAR38LED / PAR38	Ø7" Ø178mm	9-13/16" 249mm	10" 254mm	2'4-13/16" 732mm	2'5" 737mm	8-3/4" 222mm

Modular Multiples®

Solid

Surface Mounted - New/Old Work

Outstanding flexibility and design excellence in surface mounted configurations for applications where ceilings are currently installed. Can be wall, ceiling, canopy or pendent mounted with 1/16" braided stainless steel cables.

Custom Four Lamp

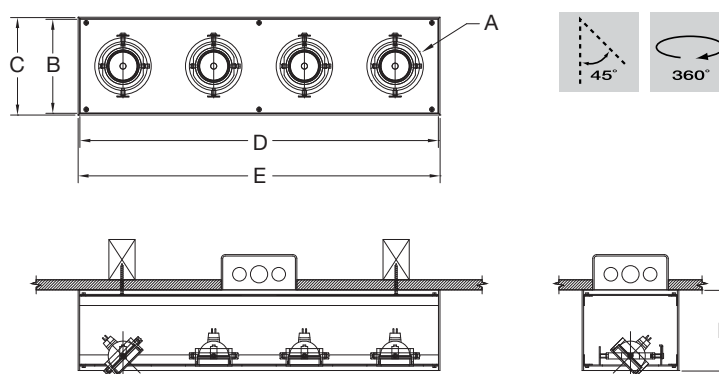


MS-4-B-x-TI-RD-SM

Modular Multiples® Surface Solid Series,
custom configuration, four MR16 lamps,
stainless steel housing, transformer incorporated,
round aperture, surface mounted configuration.

Other configurations available.

[Download CSI drop-in spec template](#)



LAMPS and DIMENSIONS	A	B	C	D	E	F	G
LED506, LED513 / MR16LED / MR16	ø3-1/2" ø89mm	5-7/8" 149mm	6-1/16" 154mm	1' 10-1/4" 565mm	1' 10-7/16" 570mm	5" 127mm	6-1/8" 156mm

Modular Multiples®

Layered®
Surface Mounted
New/Old Work



This leaflet contains products covered under one or more of the following US Patent Numbers:

6,568,826B1	6,692,139B2
6,820,999B2	7,207,698B2
6,896,391B2	6,969,182B2
6,997,267B2	6,997,574B2
7,036,953B2	6,745,785B2
7,300,176B2	7,478,921B1
D520,666S	D530,038S
D537,553S	D819,857
D818,632	D818,624
D818,623	8,740,407
8,511,860	8,231,242
8,210,720	7,832,907

Modular International, Inc. produced a major portion of the lighting for the project shown. The photograph, however, is not intended to imply that the various owners of the projects endorse our products or use our products exclusively.

Modular International Inc.
3941 California Avenue
Pittsburgh, PA 15212
1-412-734-9000
www.modularinternational.com

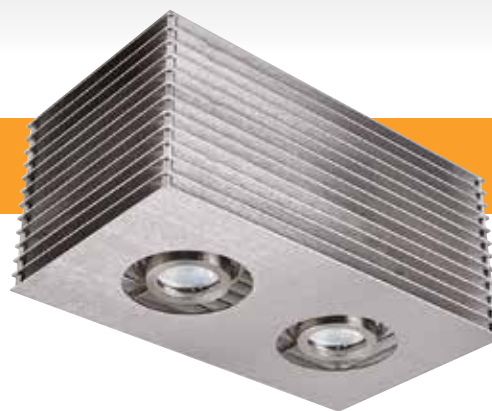
Modular Multiples®

The Original Multiple Lamp Family of Fixtures

5

Layered

Surface Mounted - New/Old Work



- Configurations:**
- 1, 2, 3, 4 light configurations standard
 - Round apertures standard
 - Custom configurations available

Housing: 14 gauge laser cut stainless steel plates

- Finishes:**
- Stainless steel / satin nickel standard
 - Powder coated custom colors available

- Electrical:**
- Internal electronic power supply(s) / transformer(s) / ballast(s)
 - Dimmable (not applicable on HID products)
 - One power supply / transformer per lamp allowing for multi-circuit wiring.
 - 120v and 277v available
 - Listed to UL1598 standards

Lamping:

Standard LED Modules

6w LED-506-6	12w LED-512-12	12w LED-512-22
8w LED-708-6	14w LED-714-12	14w LED-714-22
16w LED-716-12	16w LED-716-22	16w LED-716-45
30w LED-930-12	30w LED-930-22	30w LED-930-45

Direct Replacement LED or Legacy Lamps:

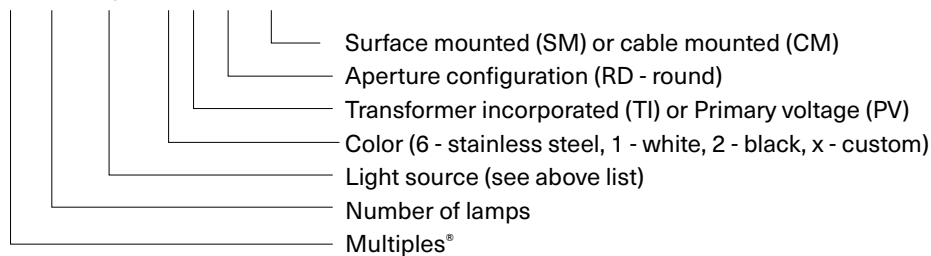
MR16LED (BLD)	MR16 HALOGEN (B)	MR16CMH (BH)
AR111LED (DLD)	AR111 HALOGEN (D)	CDMR111 (S)
PAR30LED (GLD)	PAR30 (G)	PAR30HID (H)
PAR38LED (JLD)	PAR38 (J)	PAR38HID (K)

- Mounting:**
- For applications where ceilings are currently installed.
 - Can be wall, ceiling, canopy or pendent mounted with 1/16" braided stainless steel cables.
 - Secure to ceiling or wall structure with the appropriate hardware.

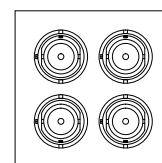
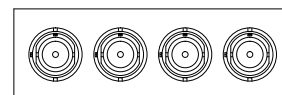
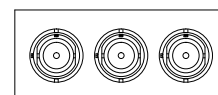
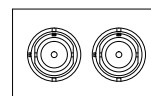
- Options:**
- Patented die-cast aluminum ring sets and locking devices
 - Shielding cones
 - Filter media
 - LED modules accept one 1/8" thick filter
 - LED direct replacement and legacy lamps accept up to two 1/8" thick filters

Model #
example:

MLS-2-LED/30-6-TI-RD-SM



[Download CSI](#)
[drop-in spec template](#)



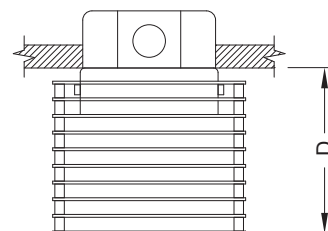
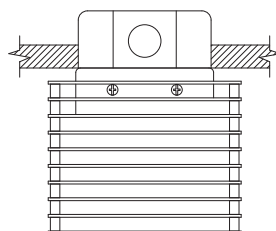
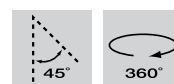
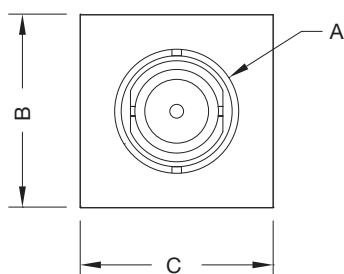
Modular Multiples®

Layered

Surface Mounted - New/Old Work

Outstanding flexibility and design excellence in surface mounted configurations for applications where ceilings are currently installed. Fixtures can be wall, ceiling, canopy or pendent mounted with 1/16" braided stainless steel cables.

One Lamp



MLS-1-LED/30-6-TI-RD-SM

Modular Multiples® Surface Layered Series,
one LED 30w module, stainless steel plates,
transformer incorporated, round aperture, surface
mounted configuration. Other configurations available.

[Download CSI drop-in spec template](#)

LAMPS and DIMENSIONS	A	B	C	D
LED506, LED513 / MR16LED / MR16	Ø3-3/8" Ø86mm	5-1/4" 133mm	5-1/4" 133mm	4-1/2" 115mm
LED708, 714, 716, 930 / AR111LED / AR111	Ø7" Ø178mm	9-1/16" 230mm	9-1/16" 230mm	4-1/2" 115mm

Modular Multiples®

Layered

Surface Mounted - New/Old Work

Outstanding flexibility and design excellence in surface mounted configurations for applications where ceilings are currently installed. Can be wall, ceiling, canopy or pendent mounted with 1/16" braided stainless steel cables.

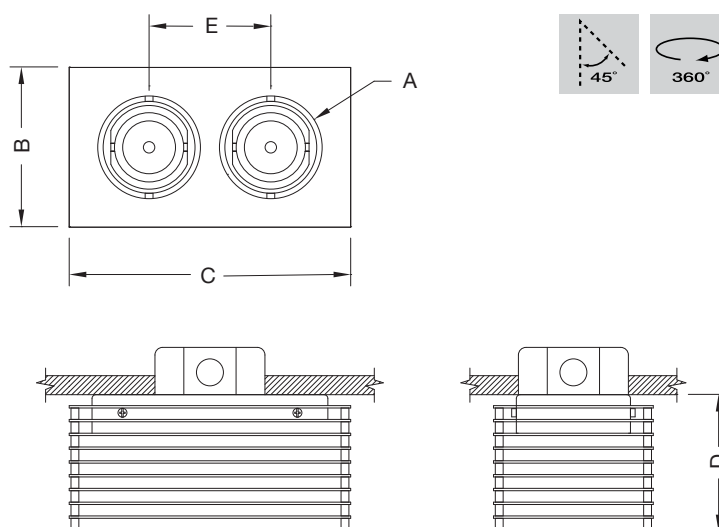
Two Lamp



MLS-2-LED/30-6-TI-RD-SM

Modular Multiples® Surface Layered Series, two LED 30w modules, stainless steel plates, transformer incorporated, round apertures, surface mounted configuration. Other configurations available.

[Download CSI drop-in spec template](#)



LAMPS and DIMENSIONS	A	B	C	D	E
LED506, LED513 / MR16LED / MR16	Ø3-3/8" Ø86mm	5-1/4" 133mm	9-1/4" 235mm	4-1/2" 115mm	4" 102mm
LED708, 714, 716, 930 / AR111LED / AR111	Ø7" Ø178mm	9-1/16" 230mm	1'4-15/16" 430mm	4-1/2" 115mm	4" 102mm

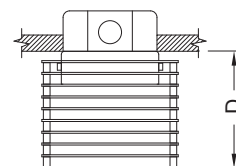
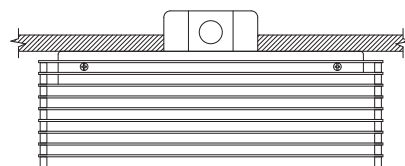
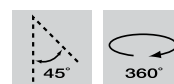
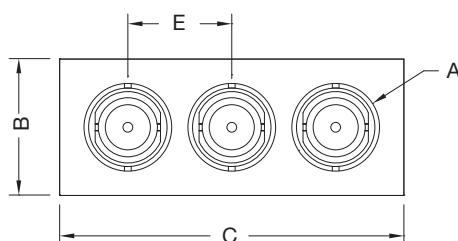
Modular Multiples®

Layered

Surface Mounted - New/Old Work

Outstanding flexibility and design excellence in surface mounted configurations for applications where ceilings are currently installed. Can be wall, ceiling, canopy or pendent mounted with 1/16" braided stainless steel cables.

Three Lamp



MLS-3-BLD-6-TI-RD-SM-SC

Modular Multiples® Surface Layered Series, three MR16LED lamps, stainless steel plates, transformer incorporated, round apertures, surface mounted configuration with shielding cones.

Other configurations available.

[Download CSI drop-in spec template](#)

LAMPS and DIMENSIONS	A	B	C	D	E
LED506, LED513 / MR16LED / MR16	Ø3-3/8" Ø86mm	5-1/4" 133mm	1'1-1/4" 337mm	4-1/2" 115mm	4" 102mm
LED708, 714, 716, 930 / AR111LED / AR111	Ø7" Ø178mm	9-1/16" 230mm	2'0-13/16" 630mm	4-1/2" 115mm	4" 102mm

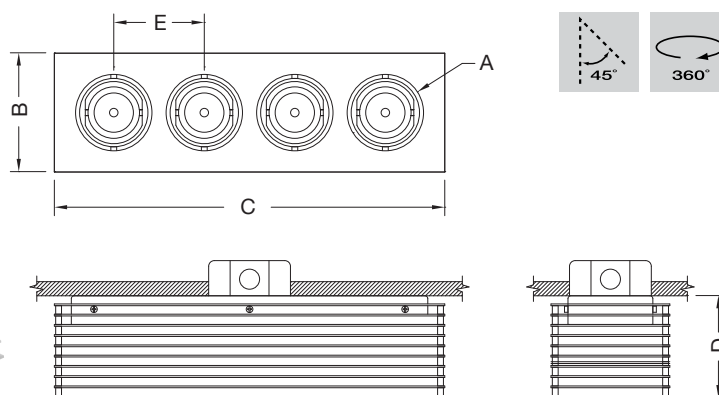
Modular Multiples®

Layered

Surface Mounted - New/Old Work

Outstanding flexibility and design excellence in surface mounted configurations for applications where ceilings are currently installed. Can be wall, ceiling, canopy or pendent mounted with 1/16" braided stainless steel cables.

Four Lamp



MLS-4-BLD-6-TI-RD-SM-SC

Modular Multiples® Surface Layered Series, four MR16LED lamps, stainless steel plates, transformer incorporated, round apertures, surface mounted configuration with shielding cones.

Other configurations available.

[Download CSI drop-in spec template](#)

LAMPS and DIMENSIONS	A	B	C	D	E
LED506, LED513 / MR16LED / MR16	Ø3-3/8" Ø86mm	5-1/4" 133mm	1'5-1/4" 438mm	4-1/2" 115mm	4" 102mm
LED708, 714, 716, 930 / AR111LED / AR111	Ø7" Ø178mm	9-1/16" 230mm	2'8-11/16" 830mm	4-1/2" 115mm	4" 102mm

Modular Multiples®

Layered

Surface Mounted - New/Old Work

Outstanding flexibility and design excellence in surface mounted configurations for applications where ceilings are currently installed. Can be wall, ceiling, canopy or pendent mounted with 1/16" braided stainless steel cables.

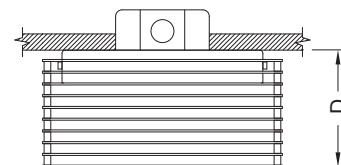
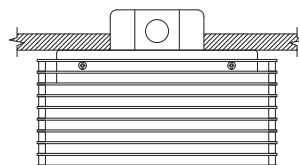
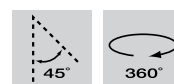
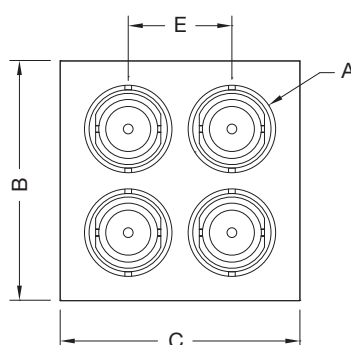
Four Lamp Square



MLS-4-D-6-TI-RDSQ-SM

Modular Multiples® Surface Layered Series, four AR111 lamps, stainless steel plates, transformer incorporated, round apertures/square arrangement, surface mounted configuration. Other configurations available.

[Download CSI drop-in spec template](#)



LAMPS and DIMENSIONS	A	B	C	D	E
LED506, LED513 / MR16LED / MR16	Ø3-3/8" Ø86mm	9-1/4" 235mm	9-1/4" 235mm	4-1/2" 115mm	4" 102mm
LED708, 714, 716, 930 / AR111LED / AR111	Ø7" Ø178mm	1'4-15/16" 430mm	1'4-15/16" 430mm	4-1/2" 115mm	4" 102mm

Modular Multiples®

Layered

Surface Mounted - New/Old Work

Outstanding flexibility and design excellence in surface mounted configurations for applications where ceilings are currently installed. Can be wall, ceiling, canopy or pendent mounted with 1/16" braided stainless steel cables.

Custom Mixed Lamp

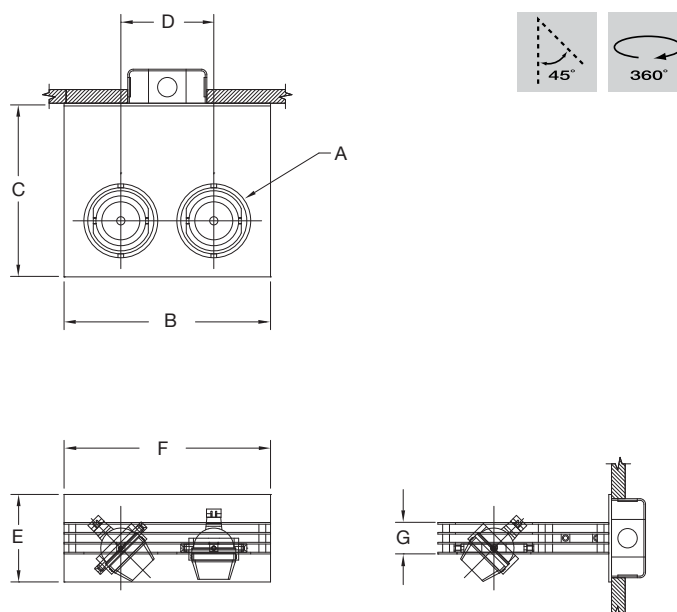


MLS-2-BLD-6-TI-RD-SM-SC

Modular Multiples® Surface Layered Series,
two MR16LED lamps, stainless steel plates,
transformer incorporated, round apertures,
surface mounted configuration with shielding cones.

Other configurations available.

[Download CSI drop-in spec template](#)



LAMPS and DIMENSIONS	A	B	C	D	E	F	G
LED506, LED513 / MR16LED / MR16	Ø3-1/2" Ø89mm	9-7/16" 240mm	7-15/16" 202mm	4-1/4" 108mm	4" 102mm	9-7/16" 240mm	1-7/16" 37mm

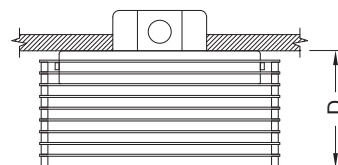
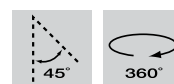
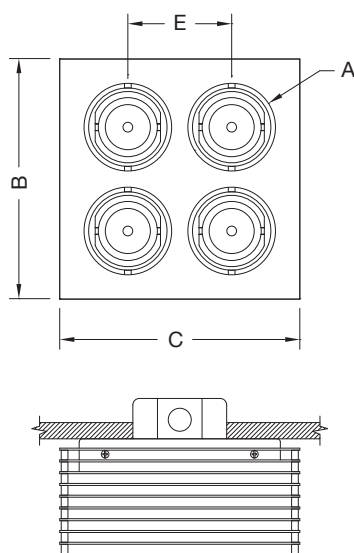
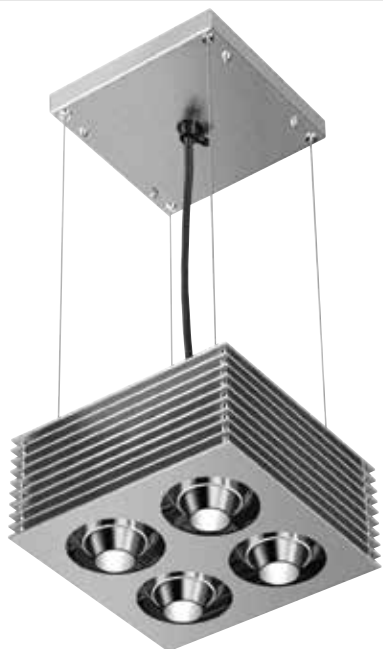
Modular Multiples®

Layered

Surface Mounted - New/Old Work

Outstanding flexibility and design excellence in surface mounted configurations for applications where ceilings are currently installed. Can be wall, ceiling, canopy or pendent mounted with 1/16" braided stainless steel cables.

Custom Four Lamp Square



MLS-4-BLD-6-TI-RD-CM-SC

Modular Multiples® Surface Layered Series,
four MR16LED lamps, stainless steel plates,
transformer incorporated, round apertures,
cable mounted configuration with shielding cones.

Other configurations available.

[Download CSI drop-in spec template](#)

LAMPS and DIMENSIONS	A	B	C	D	E
LED506, LED513 / MR16LED / MR16	Ø3-3/8" Ø86mm	9-1/4" 235mm	9-1/4" 235mm	4-1/2" 115mm	4" 102mm
LED708, 714, 716, 930 / AR111LED / AR111	Ø7" Ø178mm	1'4-15/16" 430mm	1'4-15/16" 430mm	4-1/2" 115mm	4" 102mm

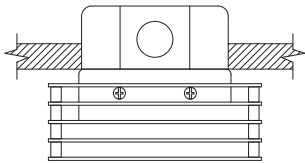
Modular Multiples®

Surface Layered Surface Mounted

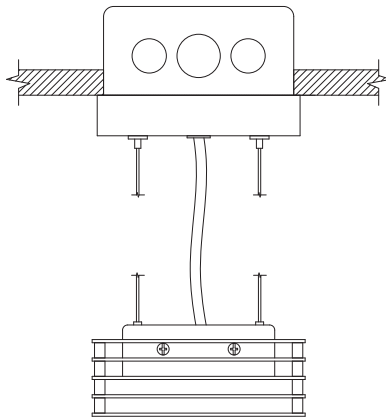


Mounting Options

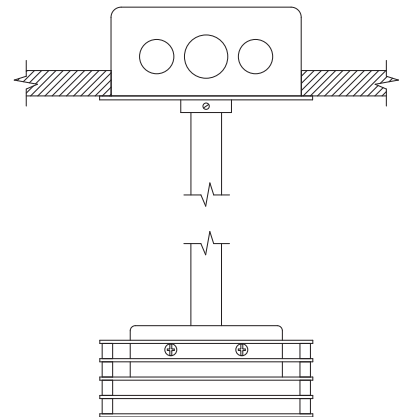
SURFACE MOUNTING



CABLE MOUNTING



STEM MOUNTING



Modular Multiples®

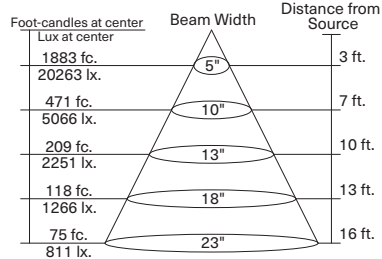
The Original Multiple Lamp Family of Fixtures



Standard LED Modules

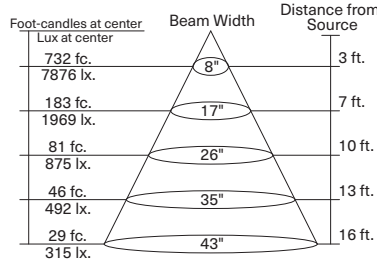
LED-506-6

337 Lumens, 6w, 6° Optics, 2700°K, 95CRI



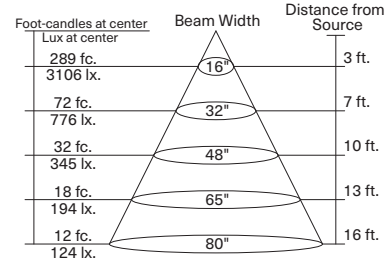
LED-512-12

591 Lumens, 12w, 12° Optics, 2700°K, 95CRI



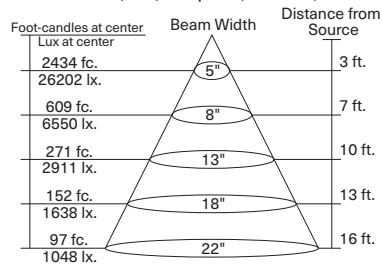
LED-512-22

646 Lumens, 12w, 22° Optics, 2700°K, 95CRI



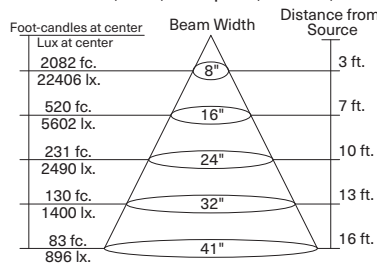
LED-708-6

433 Lumens, 8w, 6° Optics, 2700°K, 95CRI



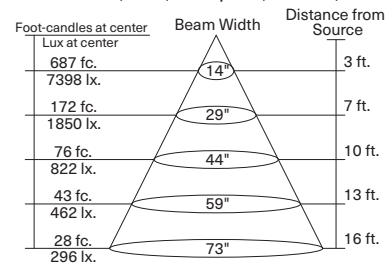
LED-714-12

1189 Lumens, 14w, 12° Optics, 2700°K, 95CRI



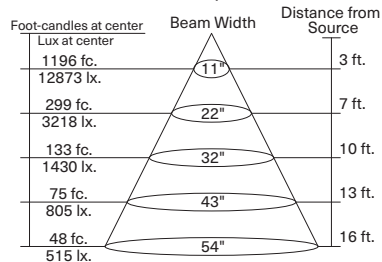
LED-714-22

1160 Lumens, 14w, 22° Optics, 2700°K, 95CRI



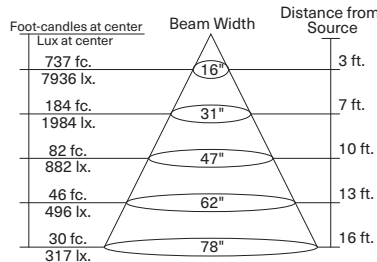
LED-716-12

1485 Lumens, 16w, 12° Optics, 2700°K, 95CRI



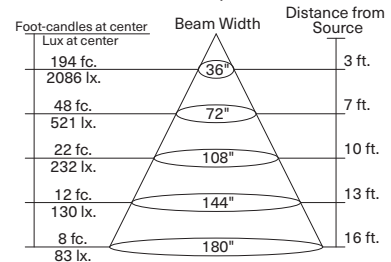
LED-716-22

1406 Lumens, 16w, 22° Optics, 2700°K, 95CRI



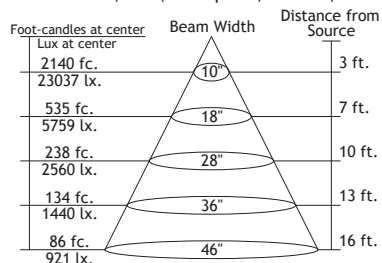
LED-716-45

1351 Lumens, 16w, 45° Optics, 2700°K, 95CRI



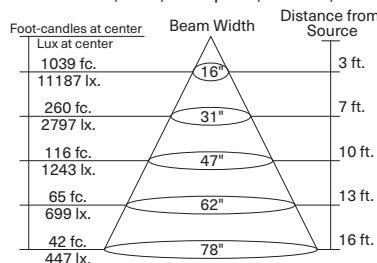
LED-930-12

2003 Lumens, 30w, 12° Optics, 3000°K, 95CRI



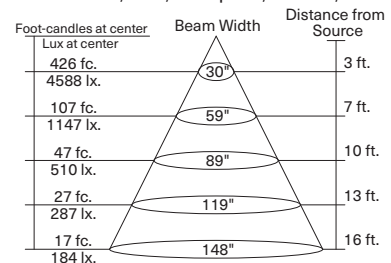
LED-930-22

2119 Lumens, 30w, 22° Optics, 3000°K, 95CRI



LED-930-45

2328 Lumens, 30w, 45° Optics, 3000°K, 95CRI



Modular International, Inc.



Elements™ 16w LED Module

16_w

Model : LED-516

Wattage: 16

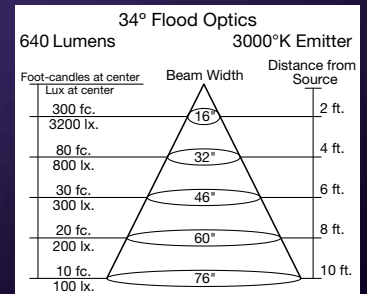
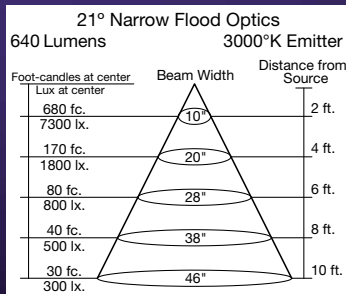
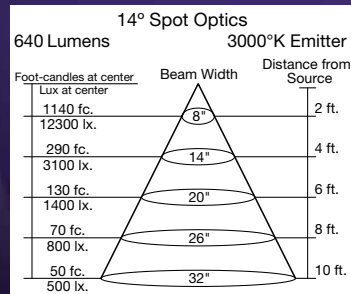
Lumens: 640 at 3000°K

Kelvin Temperature: 2850°K or 3000°K (+/- 2%)

Standard CRI: 95

Accessories and customization available: Tuning, dimming, beam angles, Kelvin temperature, shielding and filtering

Beam Angles: 14° Spot, 21° Narrow Flood, 34° Flood, 6° beam angle also available



Elements™ 30w LED Module

30_w

Model : LED-530

Wattage: 30

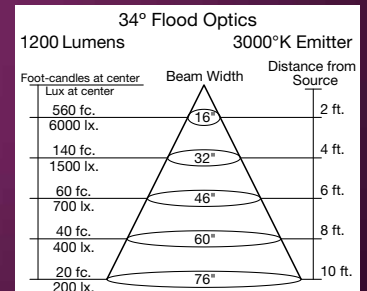
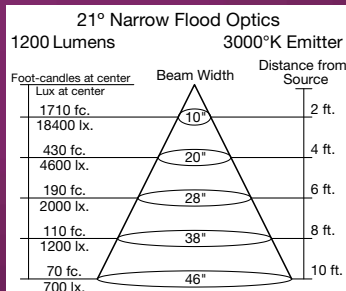
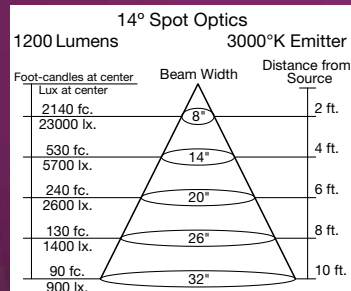
Lumens: 1200 at 3000°K

Kelvin Temperature: 2850°K or 3000°K (+/- 2%)

Standard CRI: 95

Accessories and customization available: Tuning, dimming, beam angles, Kelvin temperature, shielding and filtering

Beam Angles: 14° Spot, 21° Narrow Flood, 34° Flood, 6° beam angle also available



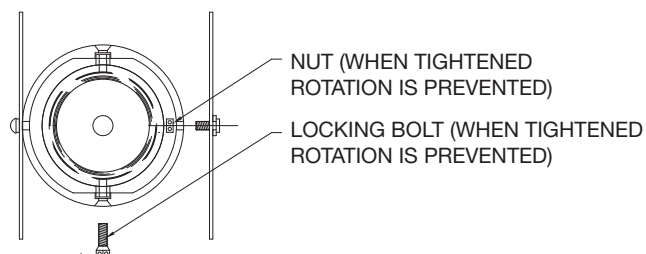
Modular Multiples®

Fixture Options

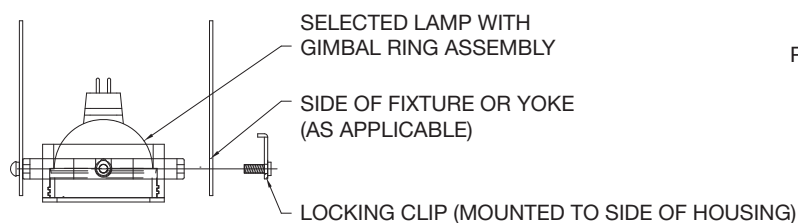
Modular accessories are used individually or in inventive combinations to shield brightness, reduce glare, vary beam patterns, retain direction, and alter color. Dimensions of all fixture options vary with lamp size.

Ring Sets and Locking Devices (PATENTED)

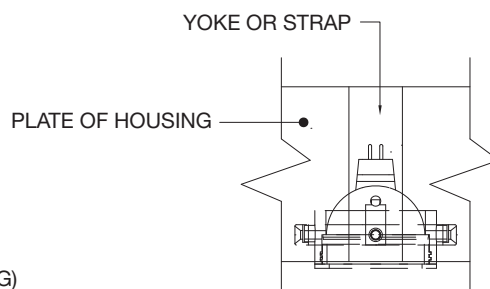
ADD -LM TO END OF MODEL NUMBER



BOTTOM VIEW



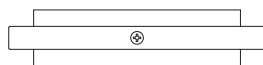
FRONT VIEW



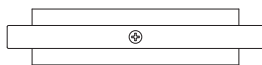
SIDE VIEW

Shielding Options

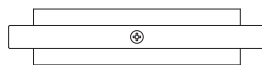
ADD SHIELDING OPTION CODE (BELOW) TO END OF MODEL NUMBER



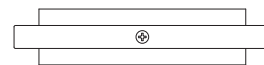
FILTER RING (STANDARD)



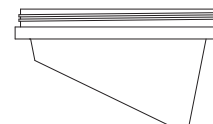
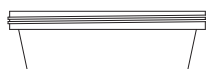
SHIELDING CONE (-SC)



SHIELDING CYLINDER (-CY)



WALL WASH CONE (-WWC)



Modular Multiples®

Fixture Options

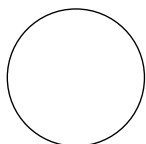
Modular accessories are used individually or in inventive combinations to shield brightness, reduce glare, vary beam patterns, retain direction, and alter color. Dimensions of all fixture options vary with lamp size.

Filter Media

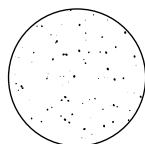
ADD FILTER MEDIA CODE (BELOW) TO END OF MODEL NUMBER

LED modules accept one 1/8" thick filter. LED direct replacement and legacy lamps accept up to two 1/8" thick filters.

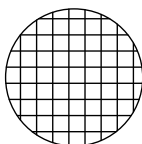
CLEAR
GLASS (-CG)



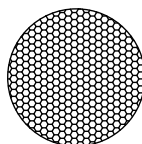
DIFFUSING
SPREAD (-DS)



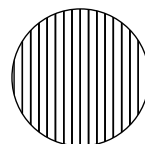
CUBE CELL
LOUVER (-CL)



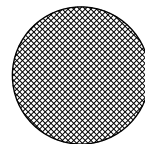
HEXCELL
LOUVER (-HL)



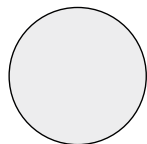
LINEAR
SPREAD (-LS)



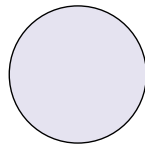
PRISMATIC WIDE
SPREAD (-PS)



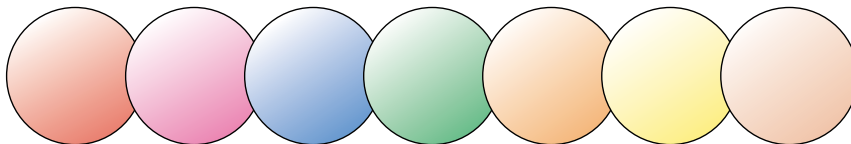
SATIN ETCHED
(-SE)



UV BLOCKING
(-UB)



DICHROIC



RED
(-DR)

MAGENTA
(-DM)

BLUE
(-DB)

GREEN
(-DG)

AMBER
(-DA)

YELLOW
(-DY)

PEACH
(-DP)