

# Modular Multiples®

**Apertures®**  
Recessed  
Trimless  
New/Old Work



This leaflet contains products covered under one or more of the following US Patent Numbers:

6,568,826B1	6,692,139B2
6,820,999B2	7,207,698B2
6,896,391B2	6,969,182B2
6,997,267B2	6,997,574B2
7,036,953B2	6,745,785B2
7,300,176B2	7,478,921B1
D520,666S	D530,038S
D537,553S	D819,857
D818,632	D818,624
D818,623	8,740,407
8,511,860	8,231,242
8,210,720	7,832,907

Modular International, Inc. produced a major portion of the lighting for the project shown. The photograph, however, is not intended to imply that the various owners of the projects endorse our products or use our products exclusively.

**Modular International Inc.**  
3941 California Avenue  
Pittsburgh, PA 15212  
1-412-734-9000  
[www.modularinternational.com](http://www.modularinternational.com)

# Modular Multiples®

The Original Multiple Lamp Family of Fixtures

1

## Apertures®

Recessed - Trimless - New/Old Work

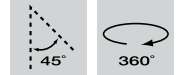


Patented

- Configurations:**
- 1, 2, 3, 4 light units standard
  - Round, square, rectangular apertures, with a standard throat depth of 1-1/2"
  - Customization available

**Housing:** Fabricated 18 gauge steel housing connected to preformed panel with tape edge on all sides that mates to 5/8" drywall or plaster

[Download CSI drop-in spec template](#)



- Finishes:**
- Housing and ring sets powder coated - white or black standard
  - Custom colors available
  - Stainless steel / satin nickel available
  - Panel provided with a white primer finish

- Electrical:**
- Internal electronic power supply(s) / transformer(s) / ballast(s) accessible through the aperture of the fixture
  - Dimmable (not applicable on HID products)
  - One power supply/transformer per lamp for multi-circuit wiring
  - 120v and 277v available
  - Listed to UL1598 standards

**Lamping:**

**Standard LED Modules**

6w LED-506-6	12w LED-512-12	12w LED-512-22
8w LED-708-6	14w LED-714-12	14w LED-714-22
16w LED-716-12	16w LED-716-22	16w LED-716-45
30w LED-930-12	30w LED-930-22	30w LED-930-45

**Direct Replacement LED or Legacy Lamps:**

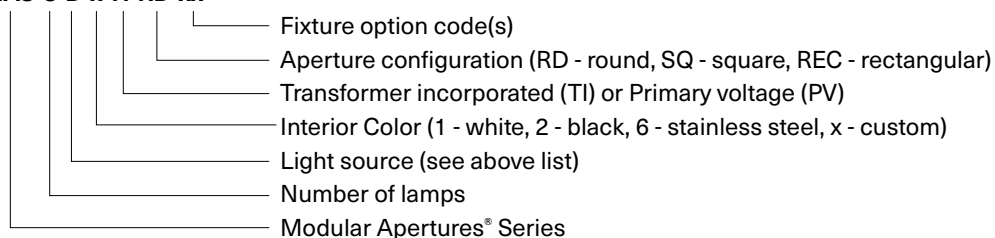
MR16LED (BLD)	MR16 HALOGEN (B)	MR16CMH (BH)
AR111LED (DLD)	AR111 HALOGEN (D)	CDMR111 (S)
PAR30LED (GLD)	PAR30 (G)	PAR30HID (H)
PAR38LED (JLD)	PAR38 (J)	PAR38HID (K)

- Mounting:**
- Housings designed to be supported from above with 3/8" (9mm) all-thread rods
  - Panels designed to be secured to ceiling framing structure via flat head screws through holes provided in tape edge

- Options:**
- Patented die-cast aluminum ring sets and locking devices
  - Pull down yokes
  - Shielding cones
  - Filter media
    - LED modules accept one 1/8" thick filter
    - LED direct replacement and legacy lamps accept up to two 1/8" thick filters

**Model # example:**

**MAS-3-D-x-TI-RD-xx**



# Modular Multiples®

1

## Apertures®

Recessed - Trimless - New/Old Work

These elegant, trimless fixtures are thoroughly flexible in application. Apertures® preformed panels are easily grouped in linear or nonlinear patterns of any length or diameter, giving architects and designers the ability to create artful, imaginative, and seamless ceiling patterns. Round, square, and rectangular apertures with patented accessories such as locking rings and shielding filter media systems are standard. Custom configurations available. Fixture dimensions vary with lamp type.

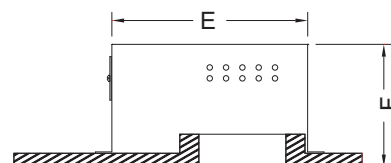
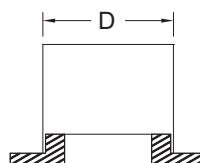
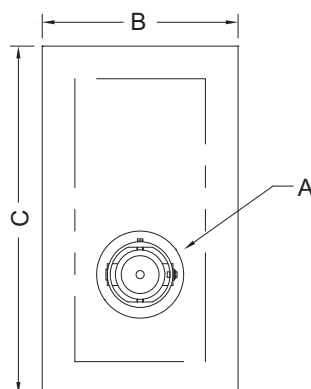
### One Round Aperture



MAS-1-D-x-TI-RD

Modular Multiples® Apertures® Series, one AR111 lamp, preformed panel, transformer incorporated, round aperture. Other configurations available.

[Download CSI drop-in spec template](#)



LAMPS and DIMENSIONS	A	B	C	D	E	F
LED506, 513 MR16LED / MR16	Ø4-1/2" Ø114mm	11" 279mm	16" 406mm	8" 203mm	9-5/16" 237mm	6-5/8" 168mm
LED708, 714, 716, 930 AR111LED / AR111	Ø7" Ø178mm	12" 305mm	16" 406mm	9" 229mm	11" 279mm	5-5/8" 143mm
PAR38LED / PAR38	Ø7-1/2" Ø191mm	12-1/2" 318mm	18" 203mm	9-1/2" 241mm	13" 330mm	9" 229mm

# Modular Multiples®

1

## Apertures®

Recessed - Trimless - New/Old Work

These elegant, trimless fixtures are thoroughly flexible in application. Apertures® preformed panels are easily grouped in linear or nonlinear patterns of any length or diameter, giving architects and designers the ability to create artful, imaginative, and seamless ceiling patterns. Round, square, and rectangular apertures with patented accessories such as locking rings and shielding filter media systems are standard. Custom configurations available. Fixture dimensions vary with lamp type.

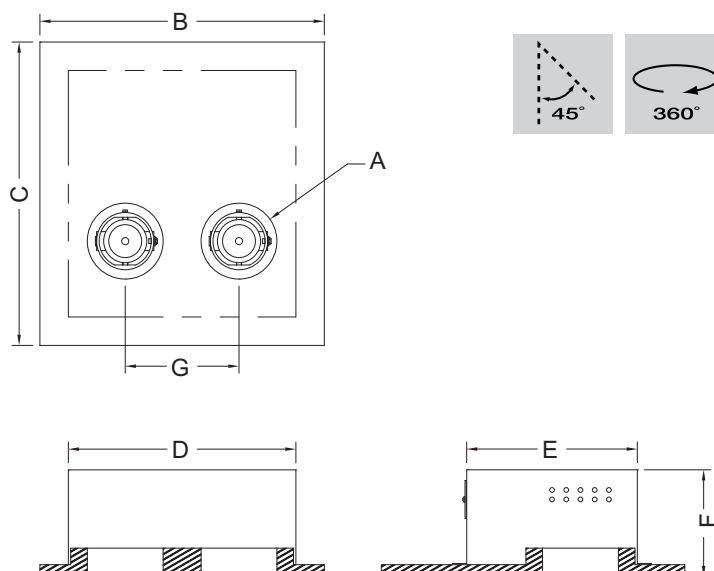
### Two Round Apertures



MAS-2-D-x-TI-RD

Modular Multiples® Apertures® Series, two AR111 lamps, preformed panel, transformer incorporated, round apertures. Other configurations available.

[Download CSI drop-in spec template](#)



LAMPS and DIMENSIONS	A	B	C	D	E	F	G
LED506, 513 MR16LED / MR16	Ø4-1/2" Ø114mm	18" 457mm	16" 406mm	15" 381mm	9-5/16" 237mm	6-5/8" 168mm	7" 178mm
LED708, 714, 716, 930 AR111LED / AR111	Ø7" Ø178mm	22-1/2" 572mm	16" 406mm	19-1/2" 241mm	11" 279mm	5-5/8" 143mm	10-1/2" 267mm
PAR38LED / PAR38	Ø7-1/2" Ø191mm	23-3/4" 603mm	18" 457mm	20-3/4" 527mm	13" 330mm	9" 229mm	11-1/4" 286mm

# Modular Multiples®

1

## Apertures®

Recessed - Trimless - New/Old Work

These elegant, trimless fixtures are thoroughly flexible in application. Apertures® preformed panels are easily grouped in linear or nonlinear patterns of any length or diameter, giving architects and designers the ability to create artful, imaginative, and seamless ceiling patterns. Round, square, and rectangular apertures with patented accessories such as locking rings and shielding filter media systems are standard. Custom configurations available. Fixture dimensions vary with lamp type.

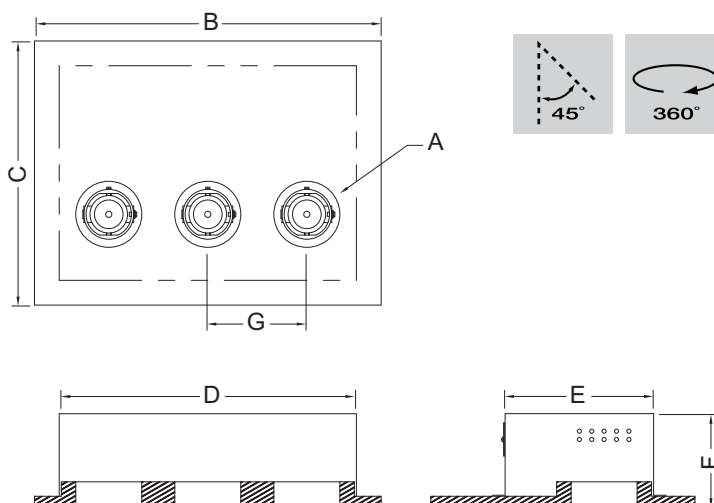
### Three Round Apertures



MAS-3-D-x-TI-RD

Modular Multiples® Apertures® Series, three AR111 lamps, preformed panel, transformer incorporated, round apertures. Other configurations available.

[Download CSI drop-in spec template](#)



LAMPS and DIMENSIONS	A	B	C	D	E	F	G
LED506, 513 MR16LED / MR16	Ø4-1/2" Ø114mm	25" 635mm	16" 406mm	22" 559mm	9-5/16" 237mm	6-5/8" 168mm	7" 178mm
LED708, 714, 716, 930 AR111LED / AR111	Ø7" Ø178mm	33" 838mm	16" 406mm	30" 762mm	11" 279mm	5-5/8" 143mm	10-1/2" 267mm
PAR38LED / PAR38	Ø7-1/2" Ø191mm	35" 889mm	18" 457mm	32" 813mm	13" 330mm	9" 229mm	11-1/4" 286mm



# Modular Multiples®

1

## Apertures®

Recessed - Trimless - New/Old Work

These elegant, trimless fixtures are thoroughly flexible in application. Apertures® preformed panels are easily grouped in linear or nonlinear patterns of any length or diameter, giving architects and designers the ability to create artful, imaginative, and seamless ceiling patterns. Round, square, and rectangular apertures with patented accessories such as locking rings and shielding filter media systems are standard. Custom configurations available. Fixture dimensions vary with lamp type.

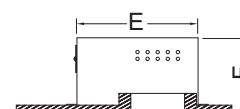
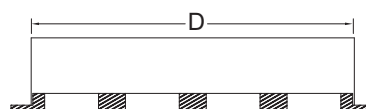
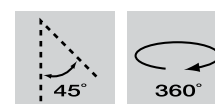
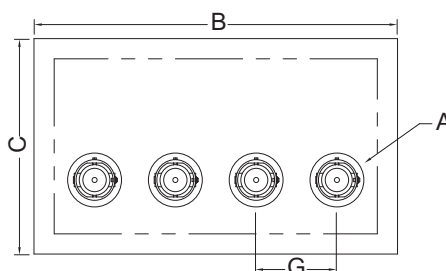
### Four Round Apertures



MAS-4-D-x-TI-RD

Modular Multiples® Apertures® Series, four AR111 lamps, preformed panel, transformer incorporated, round apertures. Other configurations available.

[Download CSI drop-in spec template](#)



LAMPS and DIMENSIONS	A	B	C	D	E	F	G
LED506, 513 MR16LED / MR16	Ø4-1/2" Ø114mm	32" 813mm	16" 406mm	29" 737mm	9-5/16" 237mm	6-5/8" 168mm	7" 178mm
LED708, 714, 716, 930 AR111LED / AR111	Ø7" Ø178mm	43-1/2" 1105mm	16" 406mm	40-1/2" 1029mm	11" 279mm	5-5/8" 143mm	10-1/2" 267mm
PAR38LED / PAR38	Ø7-1/2" Ø191mm	46-1/4" 1175mm	18" 457mm	43-1/4" 1099mm	13" 330mm	9" 229mm	11-1/4" 286mm

# Modular Multiples®

1

## Apertures®

Recessed - Trimless - New/Old Work

These elegant, trimless fixtures are thoroughly flexible in application. Apertures® preformed panels are easily grouped in linear or nonlinear patterns of any length or diameter, giving architects and designers the ability to create artful, imaginative, and seamless ceiling patterns. Round, square, and rectangular apertures with patented accessories such as locking rings and shielding filter media systems are standard. Custom configurations available. Fixture dimensions vary with lamp type.

### Four Round Apertures, Square Configuration

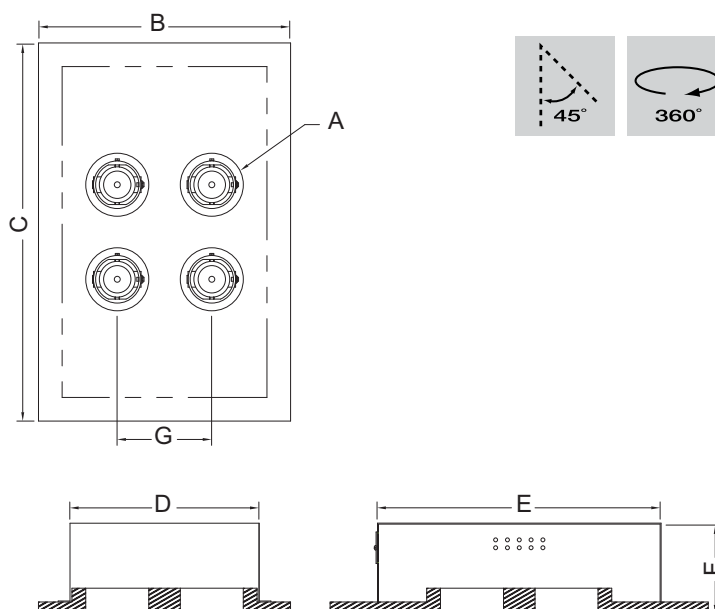


MAS-4-D-x-TI-RDSQ

Modular Multiples® Apertures® Series, four AR111 lamps, preformed panel, transformer incorporated, round apertures square configuration.

Other configurations available.

[Download CSI drop-in spec template](#)



LAMPS and DIMENSIONS	A	B	C	D	E	F	G
LED506, 513 MR16LED / MR16	Ø4-1/2" Ø114mm	16" 406mm	28" 711mm	15" 381mm	19" 483mm	6-5/8" 168mm	7" 178mm
LED708, 714, 716, 930 AR111LED / AR111	Ø7" Ø178mm	22-1/2" 572mm	29" 737mm	19-1/2" 495mm	11" 279mm	23-1/2" 597mm	10-1/2" 267mm
PAR38LED / PAR38	Ø7-1/2" Ø191mm	23-3/4" 572mm	31-7/8" 810mm	20-3/4" 527mm	13" 330mm	26-5/8" 676mm	11-1/4" 286mm

# Modular Multiples®

1

## Apertures®

Recessed - Trimless - New/Old Work

These elegant, trimless fixtures are thoroughly flexible in application. Apertures® preformed panels are easily grouped in linear or nonlinear patterns of any length or diameter, giving architects and designers the ability to create artful, imaginative, and seamless ceiling patterns. Round, square, and rectangular apertures with patented accessories such as locking rings and shielding filter media systems are standard. Custom configurations available. Fixture dimensions vary with lamp type.

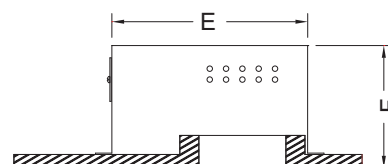
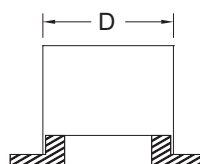
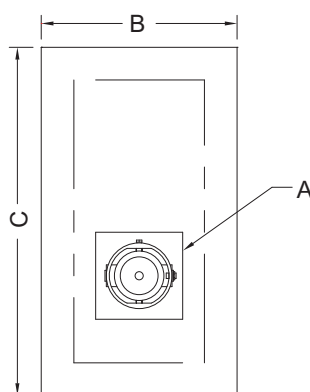
### One Square Aperture



MAS-1-B-x-TI-SQ

Modular Multiples® Apertures® Series, one MR16 lamp, preformed panel, transformer incorporated, square aperture. Other configurations available.

[Download CSI drop-in spec template](#)



LAMPS and DIMENSIONS	A	B	C	D	E	F
LED506, 513 MR16LED / MR16	4-1/2" x 4-1/2" 114 x 114 mm	11" 279mm	16" 406mm	8" 203mm	9-5/16" 237mm	6-5/8" 168mm
LED708, 714, 716, 930 AR111LED / AR111	7" x 7" 178 x 178mm	12" 305mm	16" 406mm	9" 229mm	11" 279mm	5-5/8" 143mm
PAR38LED / PAR38	7-1/2" x 7-1/2" 191 x 191mm	12-1/2" 318mm	18" 457mm	9-1/2" 241mm	13" 330mm	9" 229mm



# Modular Multiples®

1

## Apertures®

Recessed - Trimless - New/Old Work

These elegant, trimless fixtures are thoroughly flexible in application. Apertures® preformed panels are easily grouped in linear or nonlinear patterns of any length or diameter, giving architects and designers the ability to create artful, imaginative, and seamless ceiling patterns. Round, square, and rectangular apertures with patented accessories such as locking rings and shielding filter media systems are standard. Custom configurations available. Fixture dimensions vary with lamp type.

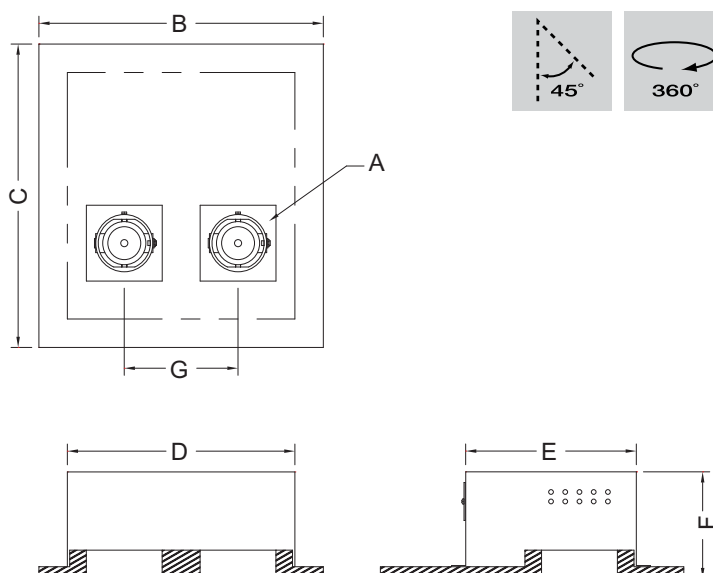
### Two Square Apertures



MAS-2-B-x-TI-SQ

Modular Multiples® Apertures® Series, two MR16 lamps, preformed panel, transformer incorporated, square apertures. Other configurations available.

[Download CSI drop-in spec template](#)



LAMPS and DIMENSIONS	A	B	C	D	E	F	G
LED506, 513 MR16LED / MR16	4-1/2"x 4-1/2" 114 x 114mm	18" 457mm	16" 406mm	15" 381mm	9-5/16" 237mm	6-5/8" 168mm	7" 178mm
LED708, 714, 716, 930 AR111LED / AR111	7" x 7" 178 x 178mm	22-1/2" 572mm	16" 406mm	19-1/2" 495mm	11" 279mm	5-5/8" 143mm	10-1/2" 267mm
PAR38LED / PAR38	7-1/2" x 7-1/2" 191 x 191mm	23-3/4" 603mm	18" 457mm	20-3/4" 527mm	13" 330mm	9" 229mm	11-1/4" 286mm

# Modular Multiples®

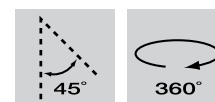
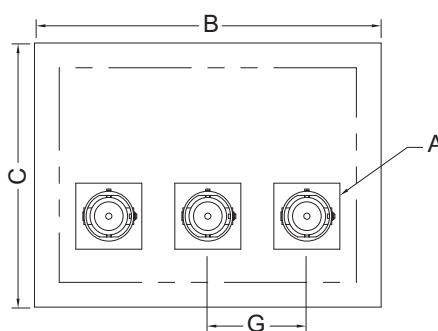
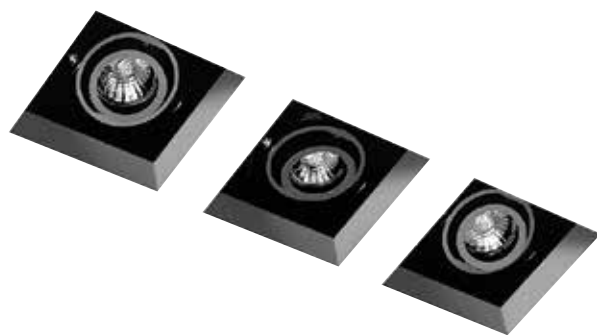
1

## Apertures®

Recessed - Trimless - New/Old Work

These elegant, trimless fixtures are thoroughly flexible in application. Apertures® preformed panels are easily grouped in linear or nonlinear patterns of any length or diameter, giving architects and designers the ability to create artful, imaginative, and seamless ceiling patterns. Round, square, and rectangular apertures with patented accessories such as locking rings and shielding filter media systems are standard. Custom configurations available. Fixture dimensions vary with lamp type.

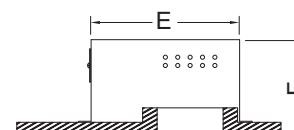
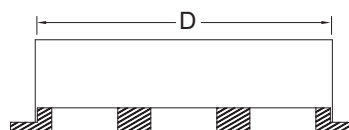
### Three Square Apertures



#### MAS-3-B-x-TI-SQ

Modular Multiples® Apertures® Series, three MR16 lamps, preformed panel, transformer incorporated, square apertures. Other configurations available.

[Download CSI drop-in spec template](#)



LAMPS and DIMENSIONS	A	B	C	D	E	F	G
LED506, 513 MR16LED / MR16	4-1/2" x 4-1/2" 114 x 114mm	25" 635mm	16" 406mm	22" 559mm	9-5/16" 237mm	6-5/8" 168mm	7" 178mm
LED708, 714, 716, 930 AR111LED / AR111	7" x 7" 178 x 178mm	33" 838mm	16" 406mm	30" 762mm	11" 279mm	5-5/8" 143mm	10-1/2" 267mm
PAR38LED / PAR38	7-1/2" x 7-1/2" 191 x 191mm	35" 889	18" 457mm	32" 813mm	13" 330mm	9" 229mm	11-1/4" 286mm

# Modular Multiples®

1

## Apertures®

Recessed - Trimless - New/Old Work

These elegant, trimless fixtures are thoroughly flexible in application. Apertures® preformed panels are easily grouped in linear or nonlinear patterns of any length or diameter, giving architects and designers the ability to create artful, imaginative, and seamless ceiling patterns. Round, square, and rectangular apertures with patented accessories such as locking rings and shielding filter media systems are standard. Custom configurations available. Fixture dimensions vary with lamp type.

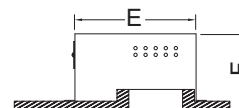
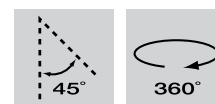
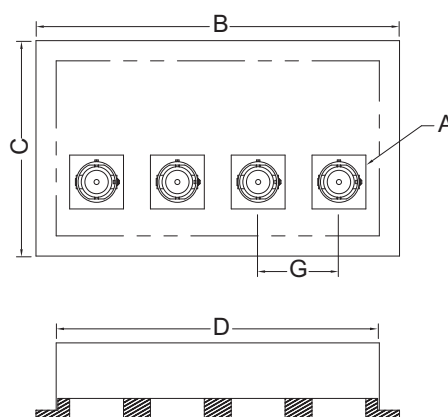
### Four Square Apertures



#### MAS-4-B-x-9-TI-SQ

Modular Multiples® Apertures® Series, four MR16 lamps, preformed panel, transformer incorporated, square apertures. Other configurations available.

[Download CSI drop-in spec template](#)



LAMPS and DIMENSIONS	A	B	C	D	E	F	G
LED506, 513 MR16LED / MR16	4-1/2" x 4-1/2" 114 x 114mm	32" 813mm	16" 406mm	29" 737mm	9-5/16" 237mm	6-5/8" 168mm	7" 178mm
LED708, 714, 716, 930 AR111LED / AR111	7" x 7" 178 x 178mm	43-1/2" 1105mm	16" 406mm	40-1/2" 1028mm	11" 279mm	5-5/8" 143mm	10-1/2" 267mm
PAR38LED / PAR38	7-1/2" x 7-1/2" 191 x 191mm	46-1/4" 1175mm	18" 457mm	43-1/4" 1099mm	13" 330mm	9" 229mm	11-1/4" 286mm

# Modular Multiples®

1

## Apertures®

Recessed - Trimless - New/Old Work

These elegant, trimless fixtures are thoroughly flexible in application. Apertures® preformed panels are easily grouped in linear or nonlinear patterns of any length or diameter, giving architects and designers the ability to create artful, imaginative, and seamless ceiling patterns. Round, square, and rectangular apertures with patented accessories such as locking rings and shielding filter media systems are standard. Custom configurations available. Fixture dimensions vary with lamp type.

### Four Square Apertures, Square Configuration

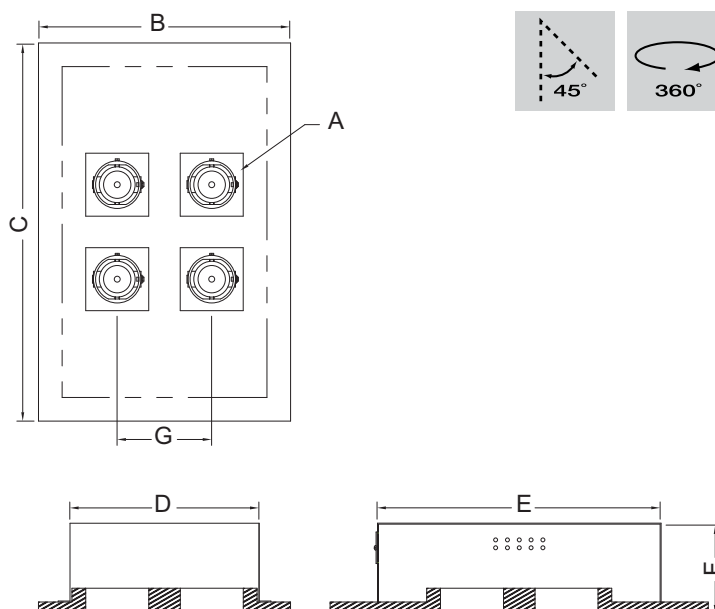


MAS-4-B-x-TI-SQSQ

Modular Multiples® Apertures® Series, four MR16 lamps, preformed panel, transformer incorporated, square apertures square configuration.

Other configurations available.

[Download CSI drop-in spec template](#)



LAMPS and DIMENSIONS	A	B	C	D	E	F	G
LED506, 513 MR16LED / MR16	4-1/2" x 4-1/2" 114 x 114mm	16" 406mm	28" 711mm	15" 381mm	19" 483mm	6-5/8" 168mm	7" 178mm
LED708, 714, 716, 930 AR111LED / AR111	7" x 7" 178 x 178mm	22-1/2" 572mm	29" 737mm	19-1/2" 495mm	23-1/2" 597mm	5-5/8" 143mm	10-1/2" 267mm
PAR38LED / PAR38	7-1/2" x 7-1/2" 191 x 191mm	23-3/4" 603mm	31-7/8" 810mm	20-3/4" 527mm	26-5/8" 683mm	9" 229mm	11-1/4" 286mm

# Modular Multiples®

1

## Apertures®

Recessed - Trimless - New/Old Work

These elegant, trimless fixtures are thoroughly flexible in application. Apertures® preformed panels are easily grouped in linear or nonlinear patterns of any length or diameter, giving architects and designers the ability to create artful, imaginative, and seamless ceiling patterns. Round, square, and rectangular apertures with patented accessories such as locking rings and shielding filter media systems are standard. Custom configurations available. Fixture dimensions vary with lamp type.

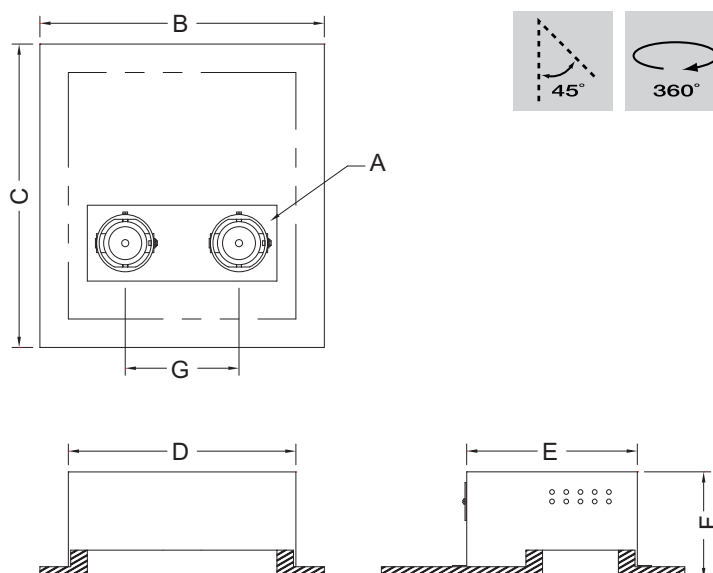
### Two Lamp Rectangular Aperture



MAS-2-B-x-TI-REC

Modular Multiples® Apertures® Series, two MR16 lamps, preformed panel, transformer incorporated, rectangular aperture. Other configurations available.

[Download CSI drop-in spec template](#)



LAMPS and DIMENSIONS	A	B	C	D	E	F	G
LED506, 513 MR16LED / MR16	4" x 10" 102 x 254mm	15" 381mm	16" 406mm	12" 305mm	9" 229mm	5-5/8" 143mm	6" 152mm
LED708, 714, 716, 930 AR111LED / AR111	7" x 17-1/2" 179 x 445mm	22-1/2" 572mm	16" 406mm	19-1/2" 495mm	11" 279mm	5-5/8" 143mm	10-1/2" 267mm
PAR38LED / PAR38	7-1/2" x 18-3/4" 191 x 476mm	23-3/4" 603mm	18" 457mm	20-3/4" 527mm	13" 330mm	9" 229mm	11-1/4" 286mm

# Modular Multiples®

1

## Apertures®

Recessed - Trimless - New/Old Work

These elegant, trimless fixtures are thoroughly flexible in application. Apertures® preformed panels are easily grouped in linear or nonlinear patterns of any length or diameter, giving architects and designers the ability to create artful, imaginative, and seamless ceiling patterns. Round, square, and rectangular apertures with patented accessories such as locking rings and shielding filter media systems are standard. Custom configurations available. Fixture dimensions vary with lamp type.

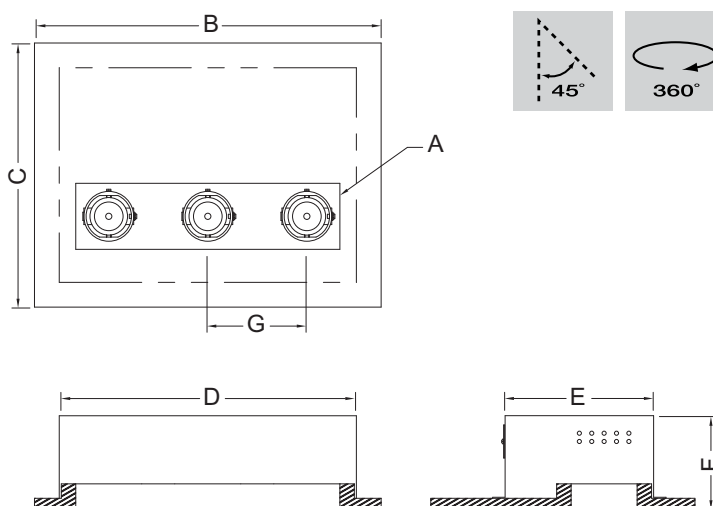
### Three Lamp Rectangular Aperture



MAS-3-B-x-TI-REC

Modular Multiples® Apertures® Series, three MR16 lamps, preformed panel, transformer incorporated, rectangular aperture. Other configurations available.

[Download CSI drop-in spec template](#)



LAMPS and DIMENSIONS	A	B	C	D	E	F	G
LED506, 513 MR16LED / MR16	4" x 16" 102 x 406mm	21" 533mm	16" 406mm	18" 457mm	9" 229mm	5-5/8" 143mm	6" 152mm
LED708, 714, 716, 930 AR111LED / AR111	7" x 28" 179 x 711mm	33" 838mm	16" 406mm	30" 762mm	11" 279mm	5-5/8" 143mm	10-1/2" 267mm
PAR38LED / PAR38	7-1/2" x 30" 191 x 762mm	35" 889mm	18" 457mm	32" 813mm	13" 330mm	9" 229mm	11-1/4" 286mm



# Modular Multiples®

1

## Apertures®

Recessed - Trimless - New/Old Work

These elegant, trimless fixtures are thoroughly flexible in application. Apertures® preformed panels are easily grouped in linear or nonlinear patterns of any length or diameter, giving architects and designers the ability to create artful, imaginative, and seamless ceiling patterns. Round, square, and rectangular apertures with patented accessories such as locking rings and shielding filter media systems are standard. Custom configurations available. Fixture dimensions vary with lamp type.

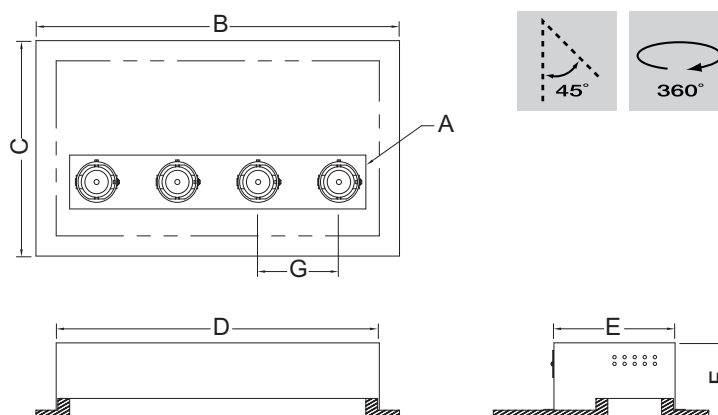
### Four Lamp Rectangular Aperture



#### MAS-4-B-x-TI-REC

Modular Multiples® Apertures® Series, four MR16 lamps, preformed panel, transformer incorporated, rectangular aperture. Other configurations available.

[Download CSI drop-in spec template](#)



LAMPS and DIMENSIONS	A	B	C	D	E	F	G
LED506, 513 MR16LED / MR16	4" x 16" 102 x 406mm	27" 686mm	16" 406mm	24" 610mm	9" 229mm	5-5/8" 143mm	6" 152mm
LED708, 714, 716, 930 AR111LED / AR111	7" x 28" 179 x 711mm	43-1/2" 1105mm	16" 406mm	40-1/2" 1029mm	11" 279mm	5-5/8" 143mm	10-1/2" 267mm
PAR38LED / PAR38	7-1/2" x 41-1/4" 191 x 1048mm	46-1/4" 1175mm	18" 457mm	43-1/4" 1099mm	13" 330mm	9" 229mm	11-1/4" 286mm

# Modular Multiples®

1

## Apertures®

Recessed - Trimless - New/Old Work

These elegant, trimless fixtures are thoroughly flexible in application. Apertures® preformed panels are easily grouped in linear or nonlinear patterns of any length or diameter, giving architects and designers the ability to create artful, imaginative, and seamless ceiling patterns. Round, square, and rectangular apertures with patented accessories such as locking rings and shielding filter media systems are standard. Custom configurations available. Fixture dimensions vary with lamp type.

### Four Lamp Square Rectangular Aperture

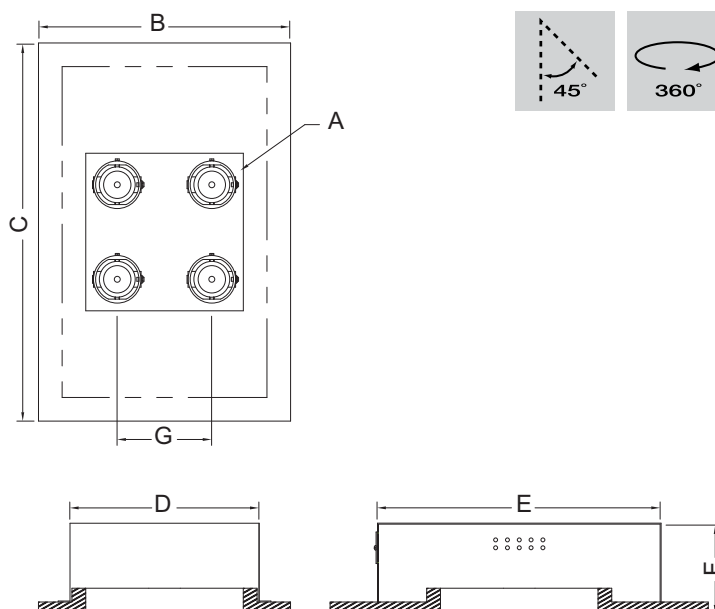


MAS-4-B-x-TI-SQ-SSQ

Modular Multiples® Apertures® Series, four MR16 lamps, preformed panel, transformer incorporated, square configuration single square aperture.

Other configurations available.

[Download CSI drop-in spec template](#)



LAMPS and DIMENSIONS	A	B	C	D	E	F	G
LED506, 513 MR16LED / MR16	10" x 10" 254 x 254mm	16" 406mm	24" 610mm	12" 305mm	18" 457mm	5-5/8" 143mm	6" 152mm
LED708, 714, 716, 930 AR111LED / AR111	17-1/2" x 17-1/2" 445 x 445mm	22-1/2" 572mm	29" 737mm	19-1/2" 495mm	23-1/2" 597mm	5-5/8" 143mm	10-1/2" 267mm
PAR38LED / PAR38	18-3/4" x 18-3/4" 476 x 476mm	23-3/4" 603mm	31-7/8" 810mm	20-3/4" 527mm	26-5/8" 676mm	9" 229mm	11-1/4" 286mm

# Modular Multiples®

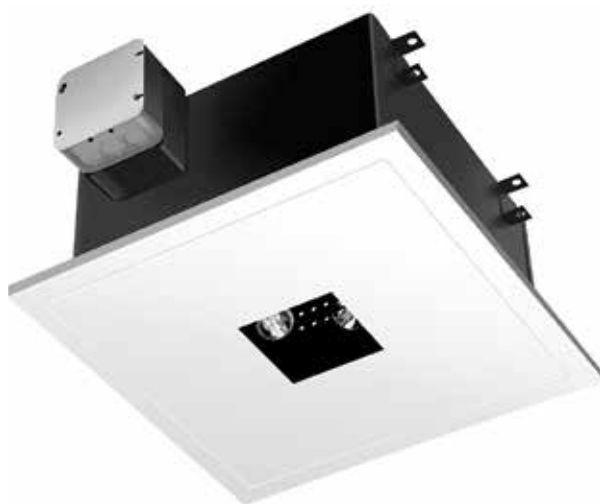
1

## Apertures®

Recessed - Trimless - New/Old Work

These elegant, trimless fixtures are thoroughly flexible in application. Apertures® preformed panels are easily grouped in linear or nonlinear patterns of any length or diameter, giving architects and designers the ability to create artful, imaginative, and seamless ceiling patterns. Round, square, and rectangular apertures with patented accessories such as locking rings and shielding filter media systems are standard. Custom configurations available. Fixture dimensions vary with lamp type.

### Custom Rotation One Square Aperture

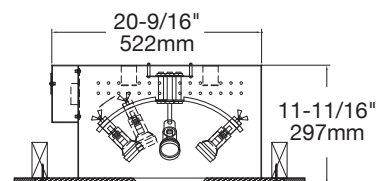
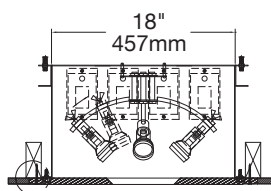
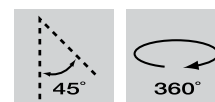
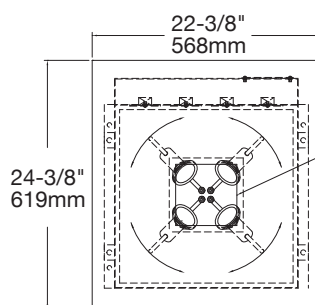


MRF-4-B-1-TI-SQ-TL

Modular Apertures Series, custom, four MR16 legacy lamps, 6" square aperture, transformer incorporated configuration shown. Other configurations available.

Other configurations available.

[Download CSI drop-in spec template](#)



# Modular Multiples®

1

## Apertures®

Recessed - Trimless - New/Old Work

These elegant, trimless fixtures are thoroughly flexible in application. Apertures® preformed panels are easily grouped in linear or nonlinear patterns of any length or diameter, giving architects and designers the ability to create artful, imaginative, and seamless ceiling patterns. Round, square, and rectangular apertures with patented accessories such as locking rings and shielding filter media systems are standard. Custom configurations available. Fixture dimensions vary with lamp type.

### Custom Rotation One Round Aperture

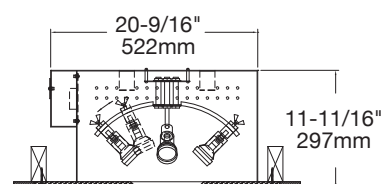
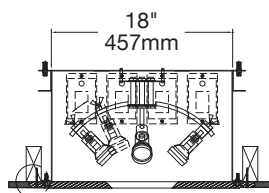
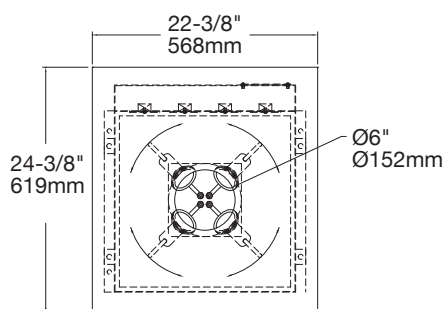


MRF-3-G-1-TI-RD-TL

Modular Apertures Series, custom, four PAR30-HID legacy lamps, 6" round aperture, transformer incorporated configuration shown.

Other configurations available.

[Download CSI drop-in spec template](#)



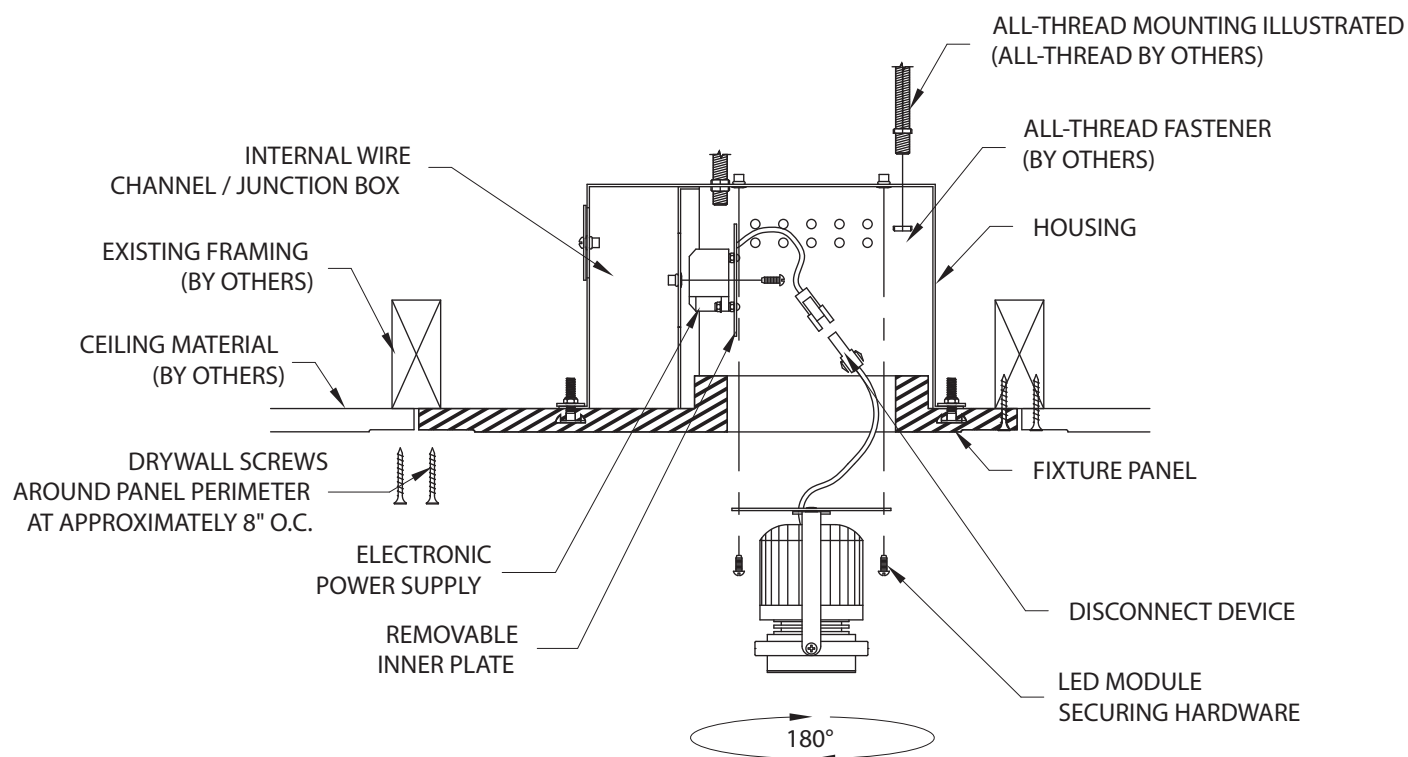
# Modular Multiples®

The Original Multiple Lamp Family of Fixtures

1

## Apertures®

Recessed - Trimless - New/Old Work



END SECTION

# Modular Multiples®

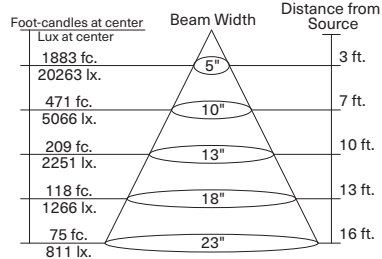
The Original Multiple Lamp Family of Fixtures



## Standard LED Modules

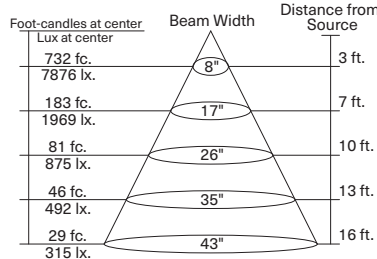
### LED-506-6

337 Lumens, 6w, 6° Optics, 2700°K, 95CRI



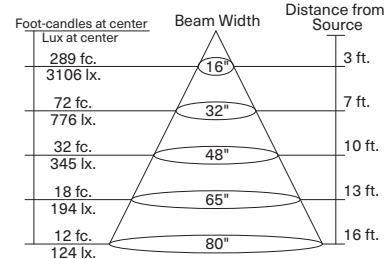
### LED-512-12

591 Lumens, 12w, 12° Optics, 2700°K, 95CRI



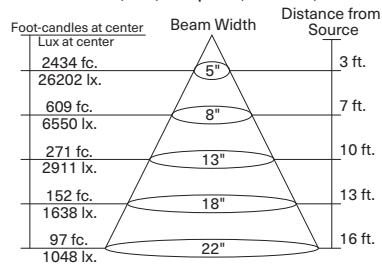
### LED-512-22

646 Lumens, 12w, 22° Optics, 2700°K, 95CRI



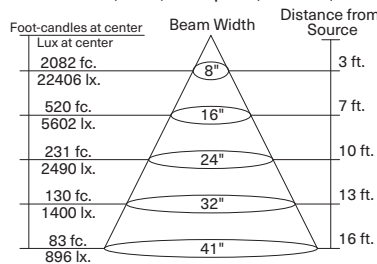
### LED-708-6

433 Lumens, 8w, 6° Optics, 2700°K, 95CRI



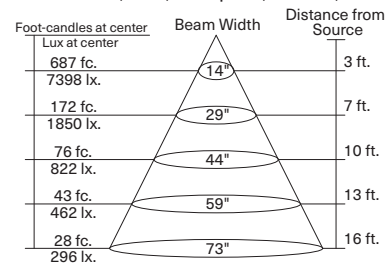
### LED-714-12

1189 Lumens, 14w, 12° Optics, 2700°K, 95CRI



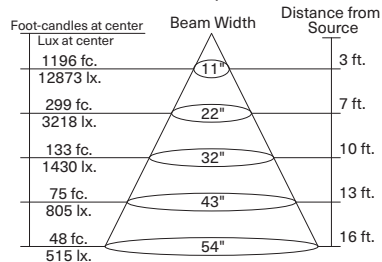
### LED-714-22

1160 Lumens, 14w, 22° Optics, 2700°K, 95CRI



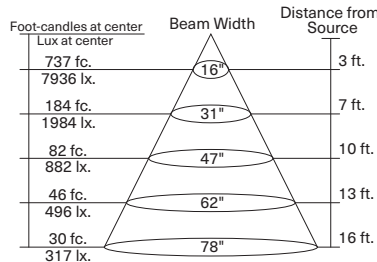
### LED-716-12

1485 Lumens, 16w, 12° Optics, 2700°K, 95CRI



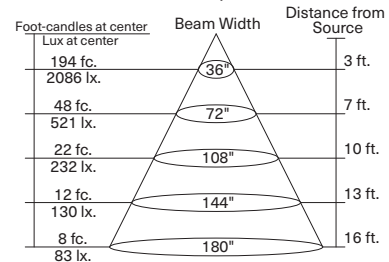
### LED-716-22

1406 Lumens, 16w, 22° Optics, 2700°K, 95CRI



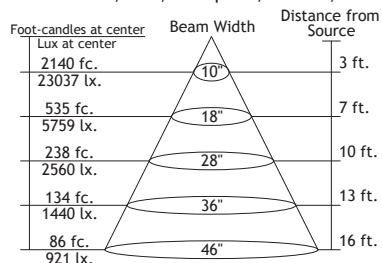
### LED-716-45

1351 Lumens, 16w, 45° Optics, 2700°K, 95CRI



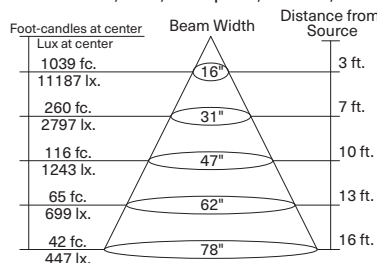
### LED-930-12

2003 Lumens, 30w, 12° Optics, 3000°K, 95CRI



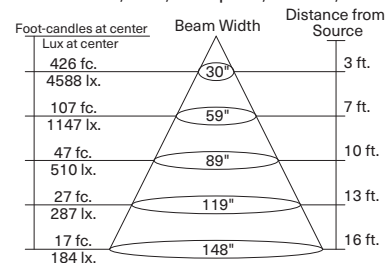
### LED-930-22

2119 Lumens, 30w, 22° Optics, 3000°K, 95CRI



### LED-930-45

2328 Lumens, 30w, 45° Optics, 3000°K, 95CRI





# Modular Multiples®

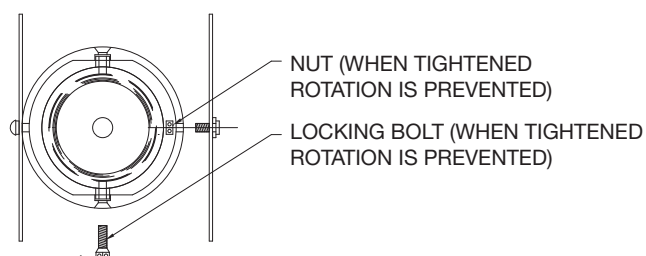
The Original Multiple Lamp Family of Fixtures

## Fixture Options

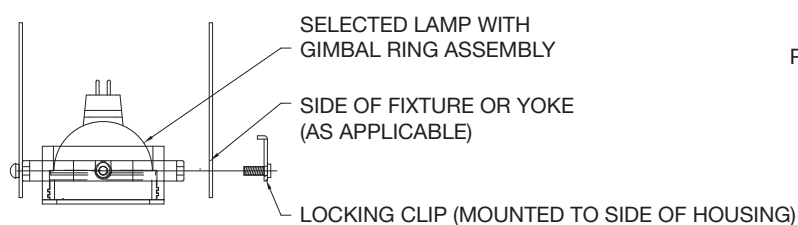
Modular accessories are used individually or in inventive combinations to shield brightness, reduce glare, vary beam patterns, retain direction, and alter color. Dimensions of all fixture options vary with lamp size.

### Ring Sets and Locking Devices (PATENTED)

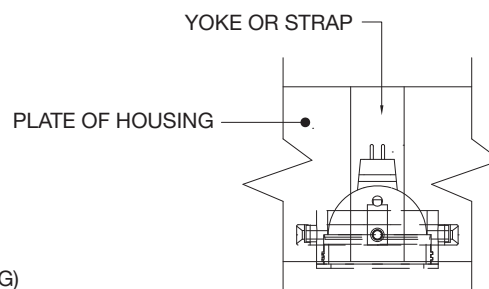
ADD -LM TO END OF MODEL NUMBER



**BOTTOM VIEW**



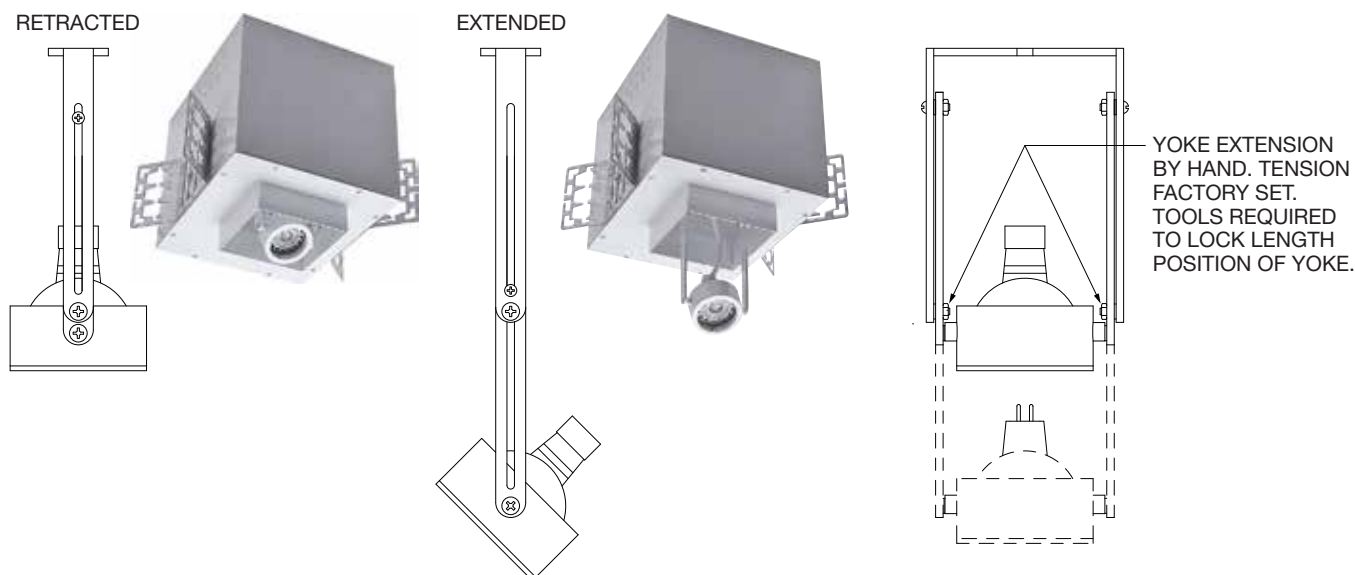
**FRONT VIEW**



**SIDE VIEW**

### Extendable Yokes

ADD -EY TO END OF MODEL NUMBER



# Modular Multiples®

The Original Multiple Lamp Family of Fixtures

## Fixture Options

Modular accessories are used individually or in inventive combinations to shield brightness, reduce glare, vary beam patterns, retain direction, and alter color. Fixture option dimensions vary with lamp size.

### Shielding Options

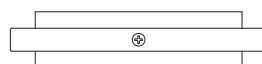
ADD SHEILDING OPTION CODE (BELOW) TO END OF MODEL NUMBER



FILTER RING (STANDARD)



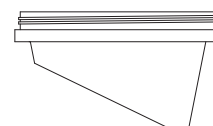
SHIELDING CONE (-SC)



SHIELDING CYLINDER (-CY)



WALL WASH CONE (-WWC)

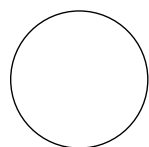


### Filter Media

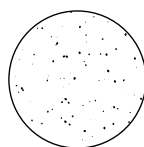
ADD FILTER MEDIA CODE (BELOW) TO END OF MODEL NUMBER

LED modules accept one 1/8" thick filter. LED direct replacement and legacy lamps accept up to two 1/8" thick filters.

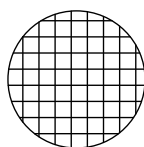
CLEAR  
GLASS (-CG)



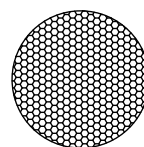
DIFFUSING  
SPREAD (-DS)



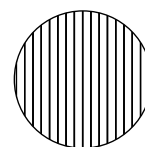
CUBE CELL  
LOUVER (-CL)



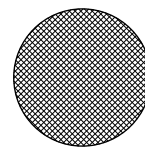
HEXCELL  
LOUVER (-HL)



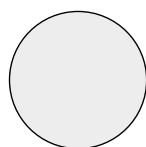
LINEAR  
SPREAD (-LS)



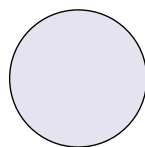
PRISMATIC WIDE  
SPREAD (-PS)



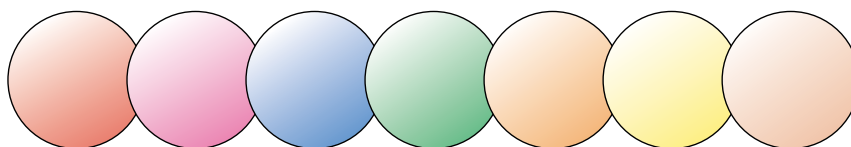
SATIN ETCHED  
(-SE)



UV BLOCKING  
(-UB)



DICHROIC



RED  
(-DR)

MAGENTA  
(-DM)

BLUE  
(-DB)

GREEN  
(-DG)

AMBER  
(-DA)

YELLOW  
(-DY)

PEACH  
(-DP)