

# Modular Multiples®

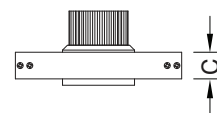
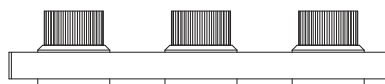
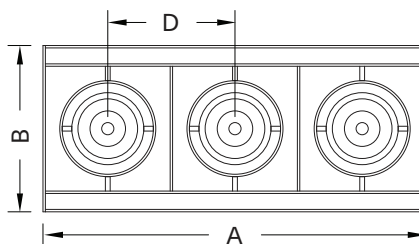
The Original Multiple Light Family of Fixtures

## Grid

Surface Mounted - New/Old Work

Contemporary design, outstanding performance, exceptional customization — Grid fixtures speak up, stand out, and draw attention. Best-in-class design, material, manufacturing, and customization options.

### Three Light



#### MGS-3-LEDDW-507-17-1-TI-REC-SM-AWNR-WH

Modular Multiples® Grid Series, three 7 watt LED modules, 1800°K - 3000°K, white, drivers/transformers incorporated, rectangular, surface mounted, Lutron Athena Wireless Node-white configuration shown. Other configurations available.

[Download CSI drop-in spec template](#)

LIGHTS and DIMENSIONS	A	B	C	D
LEDDW-507, LEDDW-508, LEDDW-509, LEDDW-511	15-1/2" 394mm	7-5/32" 182mm	1-3/8" 35mm	5-1/8" 130mm
LEDDW-713, LEDDW-719, LEDDW-726, LEDDW-730	19-1/4" 489mm	8-13/32" 214mm	1-3/8" 35mm	6-3/8" 162mm
LEDDW-936, LEDDW-940	20" 508mm	8-21/32" 220mm	1-3/8" 35mm	6-5/8" 168mm

Above measurements shown with 45° of adjustability. Certain driver options may alter housing dimensions. Contact factory for more details.

Modular International, Inc.  
1-412-734-9000  
www.modularinternational.com



REV. 05/12/23

# Modular Multiples®

The Original Multiple Light Family of Fixtures

## Grid

Surface Mounted - New/Old Work



- Configurations:**
- 2, 3, 4 light sources standard.
  - Custom configurations available.

- Housing:**
- Extruded and waterjet cut aluminum components.

- Finishes:**
- Powder coated white, black and aluminum standard.
  - Custom colors available.

- Electrical:**
- One driver/transformer incorporated per light source for multi-circuit wiring.
  - Phase, 0-10V, DALI-2, and DMX dimming options available. Consult factory for driver options.
  - 120/277V available.
  - Listed to UL1598 standards.

**Light Sources: Dim-to-Warm LED Modules**

LEDDW-507-17	LEDDW-713-20	LEDDW-936-30
LEDDW-507-30	LEDDW-713-30	LEDDW-936-45
LEDDW-507-40	LEDDW-713-40	LEDDW-936-55
LEDDW-508-17	LEDDW-713-55	LEDDW-936-90
LEDDW-508-30	LEDDW-719-20	LEDDW-940-30
LEDDW-508-40	LEDDW-719-30	LEDDW-940-45
LEDDW-509-17	LEDDW-719-40	LEDDW-940-55
LEDDW-509-30	LEDDW-719-55	LEDDW-940-90
LEDDW-509-40	LEDDW-726-20	
LEDDW-511-17	LEDDW-726-30	
LEDDW-511-30	LEDDW-726-40	
LEDDW-511-40	LEDDW-726-55	
	LEDDW-730-20	
	LEDDW-730-30	
	LEDDW-730-40	
	LEDDW-730-55	

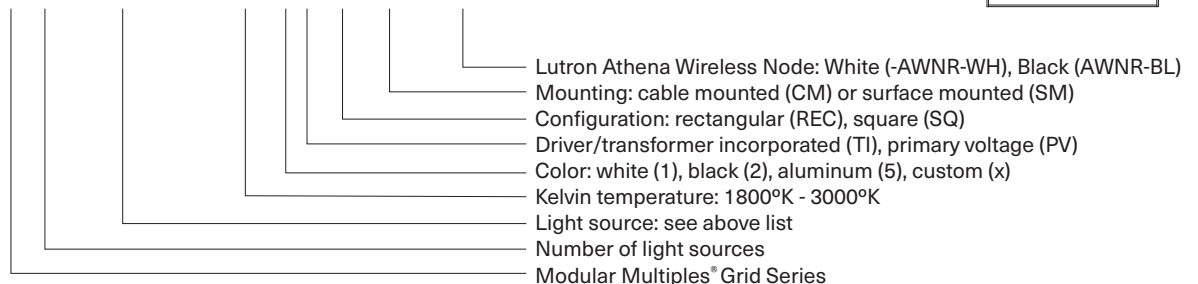
**LED legacy light source replacements:**

MR16 LED "dim-to-warm" (BLDDW) | AR111 LED "dim-to-warm" (DLDDW)

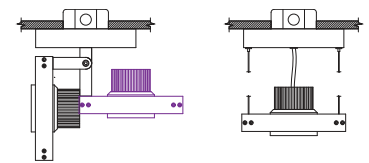
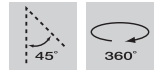
- Mounting:**
- For applications where ceilings are currently installed.
  - Can be wall, ceiling, canopy or pendent mounted with 1/16" (2mm) braided stainless steel cables.
  - Secure to ceiling or wall structure with the appropriate hardware.

- Options:**
- Patented aluminum ring sets and locking devices.
  - Pull down yokes.
  - Filter rings and shielding cylinders.
  - Filter media: up to two 1/8" (3mm) thick filter per light source.
  - Lutron Athena Wireless Node (white or black finish available).

**Model # example:** MGS-3-LEDDW-507-17-1830-1-TI-REC-SM-AWNR-WH

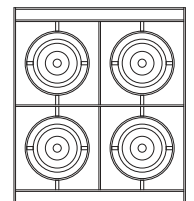
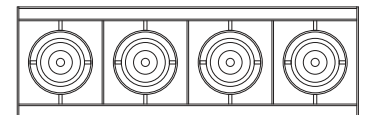
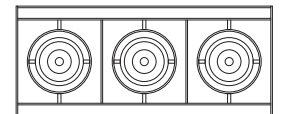
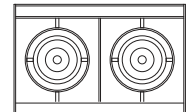


[Download CSI drop-in spec template](#)



SURFACE MOUNTING

CABLE MOUNTING



# Modular Multiples®

The Original Multiple Light Family of Fixtures



## Available LED Modules

Model Number	Watts	Beam Angle	CRI	Lumens	Lumens per watt
LEDDW-507-17	7	17°	90+	419	60
LEDDW-507-30	7	30°	90+	394	56
LEDDW-507-40	7	40°	90+	400	57
LEDDW-508-17	8	17°	90+	575	68
LEDDW-508-30	8	30°	90+	540	70
LEDDW-508-40	8	40°	90+	556	72
LEDDW-509-17	9	17°	90+	705	78
LEDDW-509-30	9	30°	90+	658	73
LEDDW-509-40	9	40°	90+	676	75
LEDDW-511-17	11	17°	90+	830	75
LEDDW-511-30	11	30°	90+	795	72
LEDDW-511-40	11	40°	90+	818	74
LEDDW-713-20	13	20°	90+	1,211	93
LEDDW-713-30	13	30°	90+	1,194	92
LEDDW-713-40	13	40°	90+	1,123	86
LEDDW-713-55	13	55°	90+	1,167	90
LEDDW-719-20	19	20°	90+	1,689	84
LEDDW-719-30	19	30°	90+	1,676	84
LEDDW-719-40	19	40°	90+	1,599	80
LEDDW-719-55	19	55°	90+	1,659	83
LEDDW-726-20	26	20°	90+	2,217	85
LEDDW-726-30	26	30°	90+	2,204	85
LEDDW-726-40	26	40°	90+	2,107	81
LEDDW-726-55	26	55°	90+	2,227	86
LEDDW-730-20	30	20°	90+	2,539	85
LEDDW-730-30	30	30°	90+	2,493	83
LEDDW-730-40	30	40°	90+	2,379	79
LEDDW-730-55	30	55°	90+	2,491	83
LEDDW-936-30	36	30°	90+	3,032	84
LEDDW-936-45	36	45°	90+	3,018	84
LEDDW-936-55	36	55°	90+	3,090	86
LEDDW-936-90	36	90°	90+	3,157	88
LEDDW-940-30	40	30°	90+	3,325	83
LEDDW-940-45	40	45°	90+	3,308	83
LEDDW-940-55	40	55°	90+	3,428	86
LEDDW-940-90	40	90°	90+	3,449	86

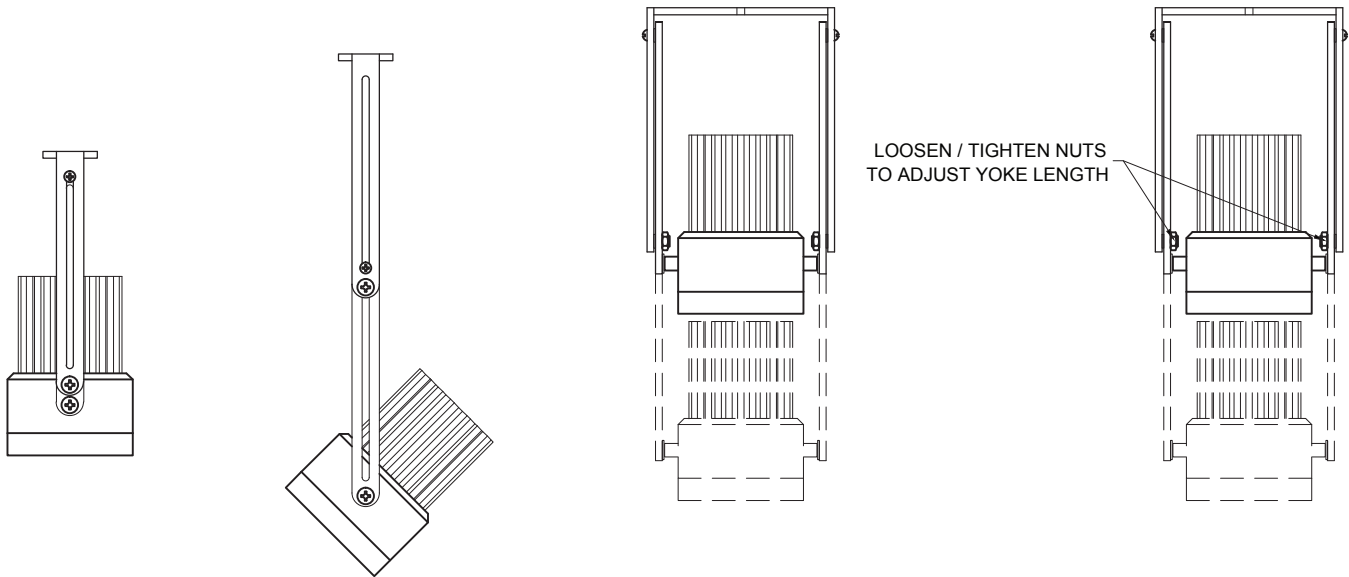
# Modular Multiples®

The Original Multiple Light Family of Fixtures

## Fixture Options

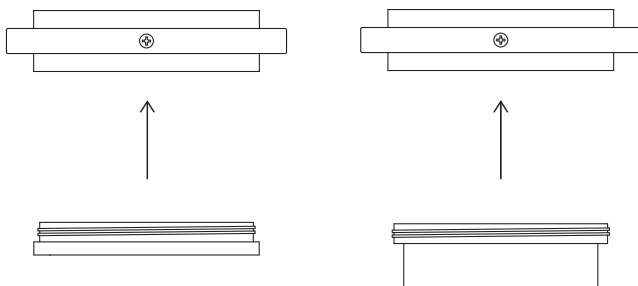
### Extendable Yokes

ADD -EY TO END OF MODEL NUMBER



### Shielding Options

ADD SHIELDING OPTION CODE (BELOW) TO END OF MODEL NUMBER



FILTER RING (STANDARD)

SHIELDING CYLINDER (-CY)

### Lutron Athena Wireless Nodes



ATHENA WIRELESS NODE  
WHITE (AWN-WH)

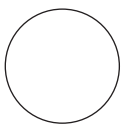


ATHENA WIRELESS NODE  
BLACK (AWN-BL)

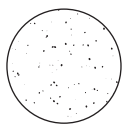
### Filter Media

ADD FILTER MEDIA CODE (BELOW) TO END OF MODEL NUMBER

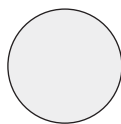
CLEAR GLASS (-CG)



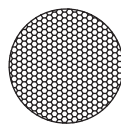
DIFFUSING SPREAD (-DS)



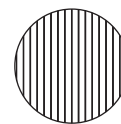
SATIN ETCHED (-SE)



HEXCELL LOUVER (-HL)



LINEAR SPREAD (-LS)



PRISMATIC WIDE SPREAD (-PS)

