

Modular Multiples®

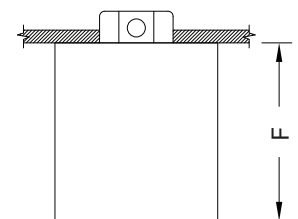
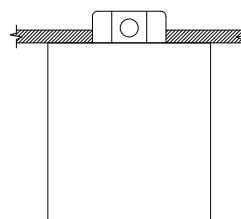
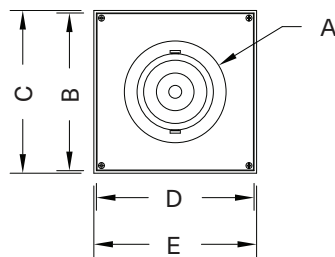
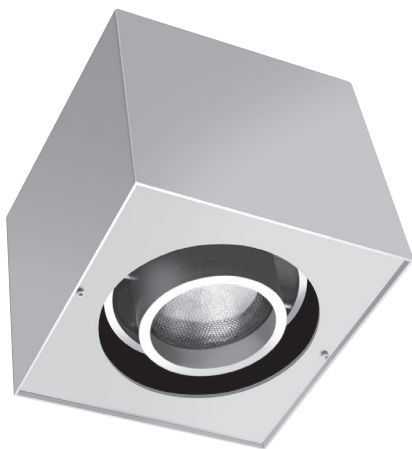
The Original Multiple Light Family of Fixtures

Solid

Surface Mounted - New/Old Work

Outstanding flexibility and design excellence in surface mounted configurations for applications where ceilings are currently installed. Can be wall, ceiling, canopy or pendent mounted with 1/16" (2mm) braided stainless steel cables.

One Light



MSS-1-LEDDW-507-17-1830-1-TI-RD-SM-AWNR-WH
Modular Multiples® Surface Series, one 7 watt LED lamp module, 1800°K - 3000°K, white housing, driver/transformer incorporated, round aperture, surface mounted, Lutron Athena Wireless Node-white configuration shown. Other configurations available.

[Download CSI drop-in spec template](#)

COMPATIBLE CEILING MATERIALS



LIGHTS and DIMENSIONS	A	B	C	D	E	F
LEDDW-507, LEDDW-508, LEDDW-509, LEDDW-511	4" 102mm	6-3/4" 171mm	7" 178mm	6-3/4" 171mm	7" 178mm	8-1/4" 210mm
LEDDW-713, LEDDW-719, LEDDW-726, LEDDW-730, LEDDW-936, LEDDW-940	5" 127mm	7-3/4" 197mm	8" 203mm	7-3/4" 197mm	8" 203mm	8-3/4" 222mm

Above measurements shown with 45° of adjustability. Certain driver options may alter housing dimensions. Contact factory for more details.

Modular Multiples®

The Original Multiple Light Family of Fixtures

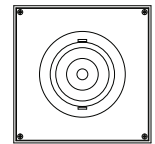
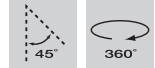


Solid

Surface Mounted - New/Old Work

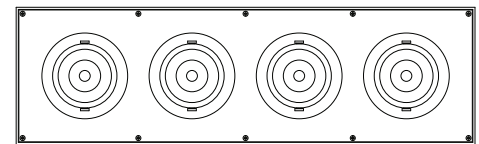
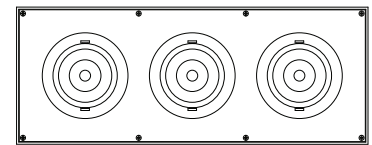
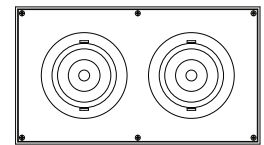
- Configurations:**
- 1, 2, 3, 4 light sources standard.
 - Round apertures standard.
 - Custom configurations available.
-
- Housing:**
- Extruded aluminum body.
 - 14 gauge steel face plate.
-
- Finishes:**
- Housing and ring sets powder coated – White or black standard.
 - Custom colors available.
-
- Electrical:**
- One driver/transformer incorporated per light source for multi-circuit wiring.
 - Phase, 0-10V, DALI-2, and DMX dimming options available. Consult factory for driver options.
 - 120/277V available.
 - Listed to UL1598 standards.

[Download CSI drop-in spec template](#)



Light Sources: Dim-to-Warm LED Modules

LEDDW-507-17	LEDDW-713-20	LEDDW-936-30
LEDDW-507-30	LEDDW-713-30	LEDDW-936-45
LEDDW-507-40	LEDDW-713-40	LEDDW-936-55
LEDDW-508-17	LEDDW-713-55	LEDDW-936-90
LEDDW-508-30	LEDDW-719-20	LEDDW-940-30
LEDDW-508-40	LEDDW-719-30	LEDDW-940-45
LEDDW-509-17	LEDDW-719-40	LEDDW-940-55
LEDDW-509-30	LEDDW-719-55	LEDDW-940-90
LEDDW-509-40	LEDDW-726-20	
LEDDW-511-17	LEDDW-726-30	
LEDDW-511-30	LEDDW-726-40	
LEDDW-511-40	LEDDW-726-55	
	LEDDW-730-20	
	LEDDW-730-30	
	LEDDW-730-40	
	LEDDW-730-55	

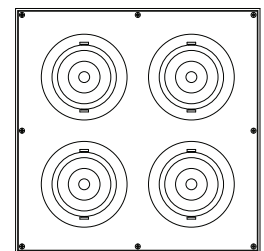


LED legacy light source replacements:

MR16 LED "dim-to-warm" (BLDDW) | AR111 LED "dim-to-warm" (DLDDW)

- Mounting:**
- For applications where ceilings are currently installed.
 - Can be wall, ceiling, canopy or pendent mounted with 1/16" (2mm) braided stainless steel cables.
 - Secure to ceiling or wall structure with the appropriate hardware.

- Options:**
- Patented aluminum ring sets and locking devices.
 - Pull down yokes.
 - Filter rings and shielding cylinders.
 - Filter media: up to two 1/8" (3mm) thick filter per light source.
 - Lutron Athena Wireless Node (white or black finish available).



Model # example: MSS-1-LEDDW-507-17-1830-1-TI-RD-SM-AWNR-WH

- Lutron Athena Wireless Node: White (-AWNR-WH), Black (AWNR-BL)
- Mounting: cable mounted (CM) or surface mounted (SM)
- Aperture: round (RD)
- Driver/transformer incorporated (TI), primary voltage (PV)
- Color: white (1), black (2), aluminum (5), custom (x)
- Kelvin temperature: 1800°K - 3000°K
- Light sources: see above list
- Number of light sources
- Modular Multiples® Surface Series

Modular Multiples®

The Original Multiple Light Family of Fixtures



Available LED Modules

Model Number	Watts	Beam Angle	CRI	Lumens	Lumens per watt
LEDDW-507-17	7	17°	90+	419	60
LEDDW-507-30	7	30°	90+	394	56
LEDDW-507-40	7	40°	90+	400	57
LEDDW-508-17	8	17°	90+	575	68
LEDDW-508-30	8	30°	90+	540	70
LEDDW-508-40	8	40°	90+	556	72
LEDDW-509-17	9	17°	90+	705	78
LEDDW-509-30	9	30°	90+	658	73
LEDDW-509-40	9	40°	90+	676	75
LEDDW-511-17	11	17°	90+	830	75
LEDDW-511-30	11	30°	90+	795	72
LEDDW-511-40	11	40°	90+	818	74
LEDDW-713-20	13	20°	90+	1,211	93
LEDDW-713-30	13	30°	90+	1,194	92
LEDDW-713-40	13	40°	90+	1,123	86
LEDDW-713-55	13	55°	90+	1,167	90
LEDDW-719-20	19	20°	90+	1,689	84
LEDDW-719-30	19	30°	90+	1,676	84
LEDDW-719-40	19	40°	90+	1,599	80
LEDDW-719-55	19	55°	90+	1,659	83
LEDDW-726-20	26	20°	90+	2,217	85
LEDDW-726-30	26	30°	90+	2,204	85
LEDDW-726-40	26	40°	90+	2,107	81
LEDDW-726-55	26	55°	90+	2,227	86
LEDDW-730-20	30	20°	90+	2,539	85
LEDDW-730-30	30	30°	90+	2,493	83
LEDDW-730-40	30	40°	90+	2,379	79
LEDDW-730-55	30	55°	90+	2,491	83
LEDDW-936-30	36	30°	90+	3,032	84
LEDDW-936-45	36	45°	90+	3,018	84
LEDDW-936-55	36	55°	90+	3,090	86
LEDDW-936-90	36	90°	90+	3,157	88
LEDDW-940-30	40	30°	90+	3,325	83
LEDDW-940-45	40	45°	90+	3,308	83
LEDDW-940-55	40	55°	90+	3,428	86
LEDDW-940-90	40	90°	90+	3,449	86

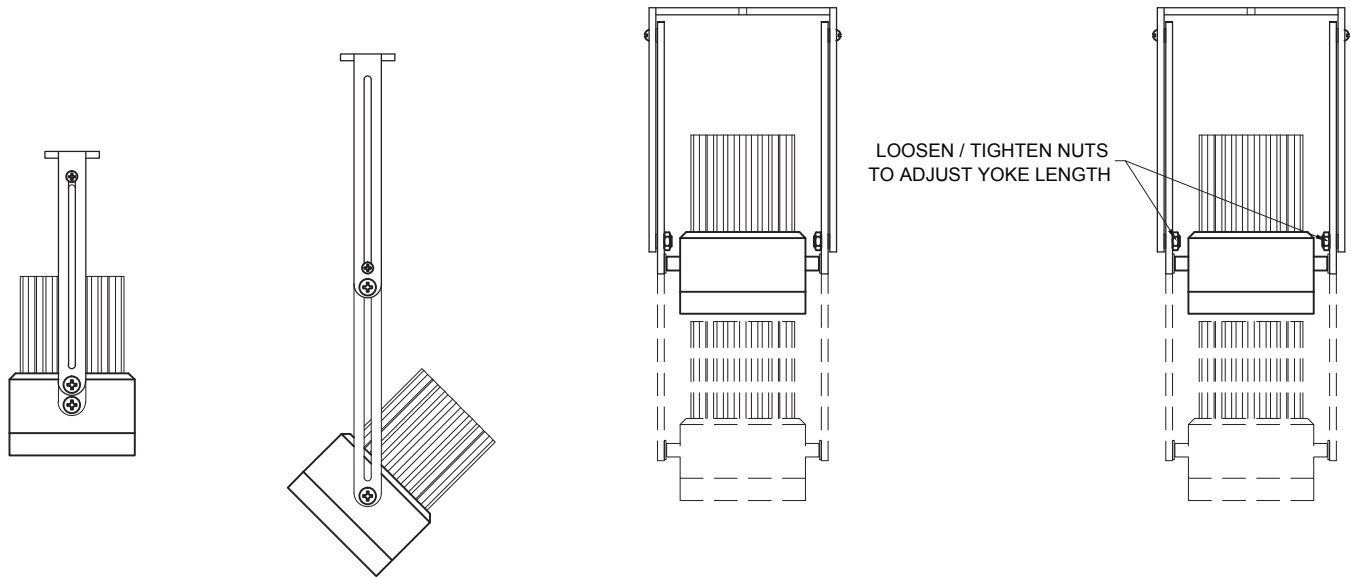
Modular Multiples®

The Original Multiple Light Family of Fixtures

Fixture Options

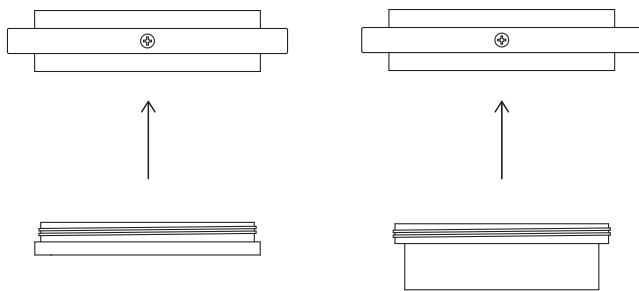
Extendable Yokes

ADD -EY TO END OF MODEL NUMBER



Shielding Options

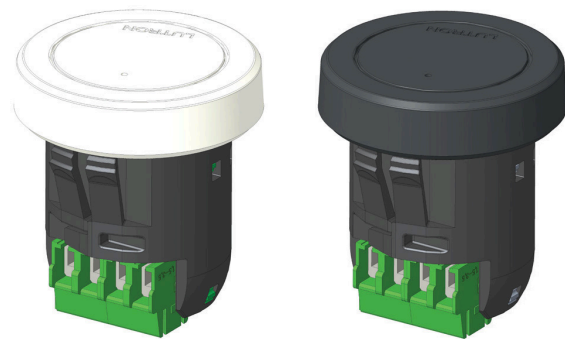
ADD SHIELDING OPTION CODE (BELOW) TO END OF MODEL NUMBER



FILTER RING (STANDARD)

SHIELDING CYLINDER (-CY)

Lutron Athena Wireless Nodes



ATHENA WIRELESS NODE
WHITE (AWN-WH)

ATHENA WIRELESS NODE
BLACK (AWN-BL)

Filter Media

ADD FILTER MEDIA CODE (BELOW) TO END OF MODEL NUMBER



CLEAR GLASS (-CG)

DIFFUSING SPREAD (-DS)

SATIN ETCHED (-SE)

HEXCELL LOUVER (-HL)

LINEAR SPREAD (-LS)

PRISMATIC WIDE SPREAD (-PS)