

# Modular Multiples®

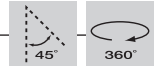
The Original Multiple Light Family of Fixtures

## Trimmed

Driver/Transformer Attached - Recessed - New/Old Work

For applications where ceilings are currently installed. An opening is cut into the ceiling material to fit the trimless mounting frame, which is secured with the appropriate hardware. Spackling compound is applied over the perforated flange and finished for a smooth appearance. Fixture wiring connections are made and fixture is inserted through the installed frame and sat in place on top of the frame and secured with provided hardware.

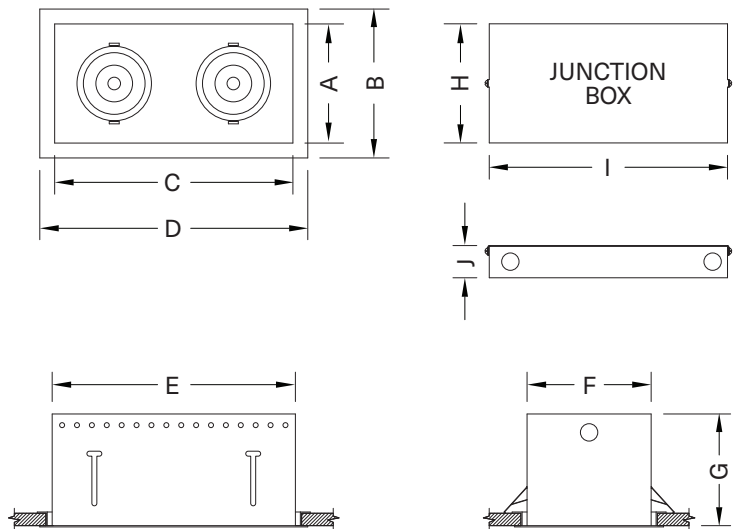
## Two Light



**MTRS-2-LEDDW-507-17-1830-2-TA-REC-AWNR-BL**

Modular Multiples® Trimmed Series, two 7 watt LED modules, 1800°K - 3000°K, black housing, drivers/transformers attached, rectangular aperture, Lutron Athena Wireless Node-black configuration shown. Other configurations available.

[Download CSI drop-in spec template](#)



### COMPATIBLE CEILING MATERIALS



LAMPS and DIMENSIONS	A	B	C	D	E	F	G
LEDDW-507, LEDDW-508, LEDDW-509, LEDDW-511	5" 127mm	6-1/2" 165mm	10" 254mm	11-1/2" 292mm	10-1/4" 260mm	5-1/4" 133mm	5-5/8" 143mm
LEDDW-713, LEDDW-719, LEDDW-726, LEDDW-730, LEDDW-936, LEDDW-940	6" 152mm	7-1/2" 190mm	12" 305mm	13-1/2" 343mm	12-1/4" 311mm	6-1/4" 159mm	5-5/8" 143mm

Above measurements shown with 45° of adjustability. Certain driver options may alter housing dimensions. Contact factory for more details.

JUNCTION BOX	H	I	J
	6" 152mm	12" 305mm	1-5/8" 41mm

Modular International, Inc.  
1-412-734-9000  
www.modularinternational.com



# Modular Multiples®

The Original Multiple Light Family of Fixtures

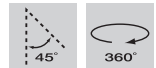


## Trimmed

Driver/Transformer Attached - Recessed - New/Old Work

- Configurations:**
- 1, 2, 3, 4 light sources standard
  - custom configurations available.
- Housing:**
- Fabricated 18 gauge steel supplied with adjustable mounting brackets.
  - 14 gauge steel trim flange.
- Finishes:**
- Housing and ring sets powder coated – white or black standard.
  - Custom colors available.
  - Stainless steel/satin nickel available.
- Electrical:**
- One driver/transformer attached per light source for multi-circuit wiring.
  - Phase, 0-10V, DALI-2, and DMX dimming options available. Please consult factory for available driver options.
  - 120/277V available.
  - Listed to UL1598 standards.

[Download CSI drop-in spec template](#)



**Light Sources: Dim-to-Warm LED Modules**

LEDDW-507-17	LEDDW-713-20	LEDDW-936-30
LEDDW-507-30	LEDDW-713-30	LEDDW-936-45
LEDDW-507-40	LEDDW-713-40	LEDDW-936-55
LEDDW-508-17	LEDDW-713-55	LEDDW-936-90
LEDDW-508-30	LEDDW-719-20	LEDDW-940-30
LEDDW-508-40	LEDDW-719-30	LEDDW-940-45
LEDDW-509-17	LEDDW-719-40	LEDDW-940-55
LEDDW-509-30	LEDDW-719-55	LEDDW-940-90
LEDDW-509-40	LEDDW-726-20	
LEDDW-511-17	LEDDW-726-30	
LEDDW-511-30	LEDDW-726-40	
LEDDW-511-40	LEDDW-726-55	
	LEDDW-730-20	
	LEDDW-730-30	
	LEDDW-730-40	
	LEDDW-730-55	

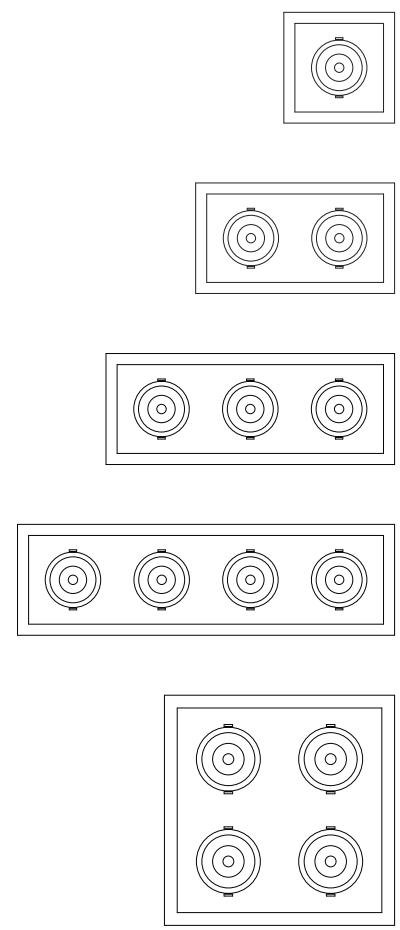
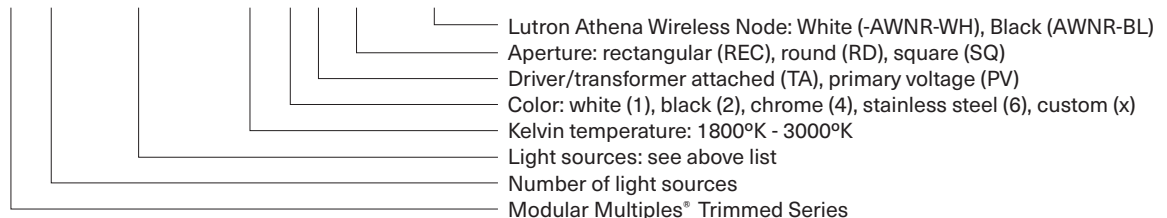
**LED legacy light source replacements:**

MR16 LED "dim-to-warm" (BLDDW) | AR111 LED "dim-to-warm" (DLDDW)

- Mounting:**
- For applications where ceilings are currently installed.
  - An opening is cut into the ceiling material to fit the Mounting Frame.
  - Housing connected to 18 gauge galvanized steel transformer/wiring section via 24" (610mm) flexible metal conduit
  - Fixture wiring connections are made and fixture is inserted through the installed frame and secured with provided hardware

- Options:**
- Patented aluminum ring sets and locking devices.
  - Pull down yokes.
  - Filter rings and shielding cylinders.
  - Filter media: up to two 1/8" (3mm) thick filter per light source.
  - Lutron Athena Wireless Node (white or black finish available).

**Model # example: MTRS-2-LEDDW-507-17-1830-2-TA-REC-AWNR-WH**



# Modular Multiples®

The Original Multiple Light Family of Fixtures



Available LED Modules

Model Number	Watts	Beam Angle	CRI	Lumens	Lumens per watt
LEDDW-507-17	7	17°	90+	419	60
LEDDW-507-30	7	30°	90+	394	56
LEDDW-507-40	7	40°	90+	400	57
LEDDW-508-17	8	17°	90+	575	68
LEDDW-508-30	8	30°	90+	540	70
LEDDW-508-40	8	40°	90+	556	72
LEDDW-509-17	9	17°	90+	705	78
LEDDW-509-30	9	30°	90+	658	73
LEDDW-509-40	9	40°	90+	676	75
LEDDW-511-17	11	17°	90+	830	75
LEDDW-511-30	11	30°	90+	795	72
LEDDW-511-40	11	40°	90+	818	74
LEDDW-713-20	13	20°	90+	1,211	93
LEDDW-713-30	13	30°	90+	1,194	92
LEDDW-713-40	13	40°	90+	1,123	86
LEDDW-713-55	13	55°	90+	1,167	90
LEDDW-719-20	19	20°	90+	1,689	84
LEDDW-719-30	19	30°	90+	1,676	84
LEDDW-719-40	19	40°	90+	1,599	80
LEDDW-719-55	19	55°	90+	1,659	83
LEDDW-726-20	26	20°	90+	2,217	85
LEDDW-726-30	26	30°	90+	2,204	85
LEDDW-726-40	26	40°	90+	2,107	81
LEDDW-726-55	26	55°	90+	2,227	86
LEDDW-730-20	30	20°	90+	2,539	85
LEDDW-730-30	30	30°	90+	2,493	83
LEDDW-730-40	30	40°	90+	2,379	79
LEDDW-730-55	30	55°	90+	2,491	83
LEDDW-936-30	36	30°	90+	3,032	84
LEDDW-936-45	36	45°	90+	3,018	84
LEDDW-936-55	36	55°	90+	3,090	86
LEDDW-936-90	36	90°	90+	3,157	88
LEDDW-940-30	40	30°	90+	3,325	83
LEDDW-940-45	40	45°	90+	3,308	83
LEDDW-940-55	40	55°	90+	3,428	86
LEDDW-940-90	40	90°	90+	3,449	86

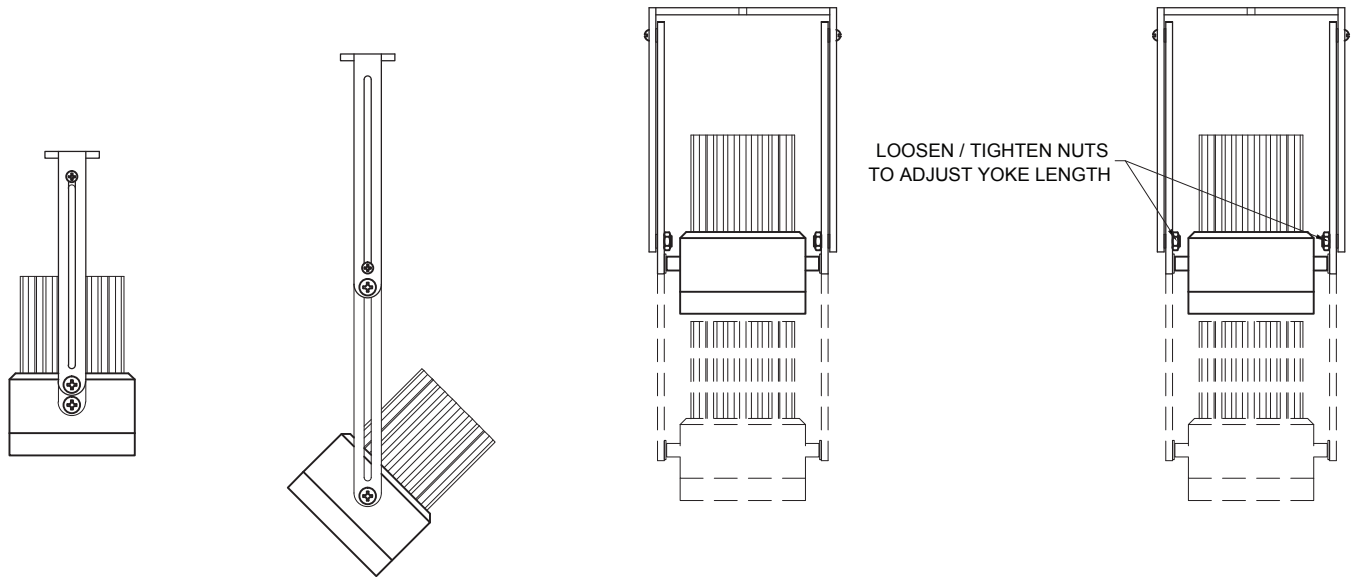
# Modular Multiples®

The Original Multiple Light Family of Fixtures

## Fixture Options

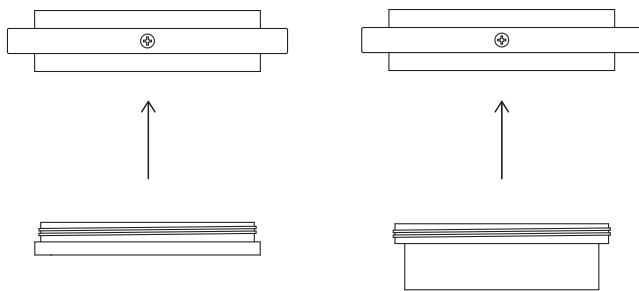
### Extendable Yokes

ADD -EY TO END OF MODEL NUMBER



### Shielding Options

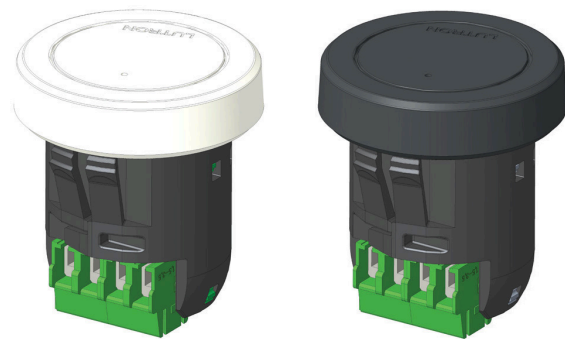
ADD SHIELDING OPTION CODE (BELOW) TO END OF MODEL NUMBER



FILTER RING (STANDARD)

SHIELDING CYLINDER (-CY)

### Lutron Athena Wireless Nodes



ATHENA WIRELESS NODE  
WHITE (AWN-WH)

ATHENA WIRELESS NODE  
BLACK (AWN-BL)

### Filter Media

ADD FILTER MEDIA CODE (BELOW) TO END OF MODEL NUMBER

