

Modular Multiples®

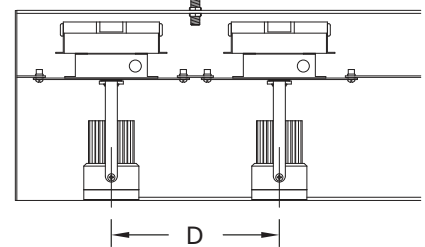
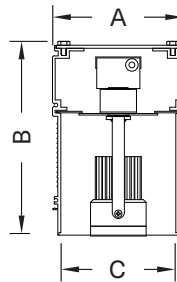
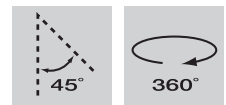
The Original Multiple Light Family of Fixtures

Linears®

Recessed - Trimless/Trimmed/Flangeless - New/Old Work

Built to your specifications, these extruded housings enable unbroken fixture lengths up to 10 feet (3 meters). Light source size determines minimum width; maximum width is unrestricted with housing connection hardware. Optional extendable yokes (-EY) increase flexibility of the light source orientation. May be ordered trimmed, trimless, or flangeless in symmetric and asymmetric configurations. Uses all LED modules and light sources.

Linears® Recessed Flangeless

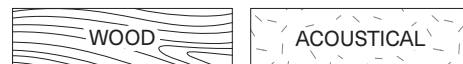


MLS-2-LEDDW-507-17-1830-5-TI-REC-FL-AWNR-WH

Modular Multiples® Linears® Series, two 7 watt LED modules, 1800°K - 3000°K, aluminum housing, drivers/transformers incorporated, rectangular aperture, flangeless, Lutron Athena Wireless Node-white configuration shown. Other configurations available.

[Download CSI drop-in spec template](#)

COMPATIBLE CEILING MATERIALS

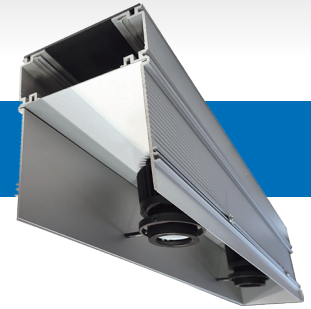


LIGHTS and DIMENSIONS	A	B	C	D
LEDDW-507, LEDDW-508, LEDDW-509, LEDDW-511	5-7/16" 138mm	8" 203mm	4-3/4" 121mm	7" (min.) 178mm (min.)
LEDDW-713, LEDDW-719, LEDDW-726, LEDDW-730	6-11/16" 170mm	8" 203mm	6" 153mm	7" (min.) 178mm (min.)
LEDDW-936, LEDDW-940	6-15/16" 176mm	8" 203mm	6-1/4" 159mm	8" (min.) 203mm (min.)

Above measurements shown with 45° of adjustability. Certain driver options may alter housing dimensions. Contact factory for more details.

Modular Multiples®

The Original Multiple Light Family of Fixtures



Linears®

Recessed - Trimless/Trimmed/Flangeless - New/Old Work

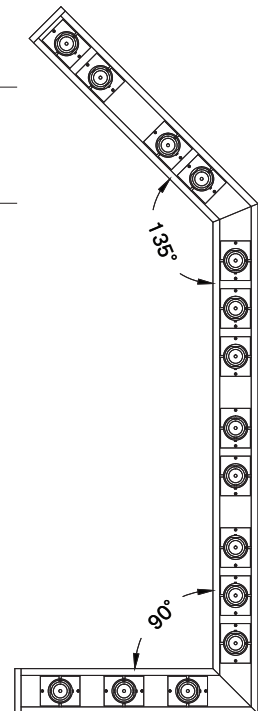
- Configurations:**
- Light sources spaced 6" (152mm) on center or greater.
 - Light source size determines minimum width, maximum length is unrestricted.
 - Optional extendable yokes increase flexibility of the light source orientation.
 - Available in symmetric and asymmetric configurations.
 - Uses all LED modules and light sources.
-
- Housing:**
- Extruded aluminum profile with a series of internal steel plates – single lengths up to 10' (3m).
 - Connection hardware available for joining multiple pieces to make longer continual lengths.
 - Available with extruded aluminum trim, trimless housing with spackle flange, or flangeless.
 - 90° and 45° corner sections available. Consult factory for custom angles and shapes.
 - Consult factory for details about integration of HVAC, speakers, sprinklers, sensors, cameras, etc.
-
- Finishes:**
- Housing and ring sets powder coated.
 - White, black or aluminum standard.
 - Custom colors available.
-
- Electrical:**
- One driver/transformer incorporated per light source for multi-circuit wiring.
 - Phase, 0-10V, DALI-2, and DMX dimming options available. Consult factory for driver options.
 - 120/277V available.
 - Listed to UL1598 standards.



[Download CSI drop-in spec template](#)

Light Sources: Dim-to-Warm LED Modules

LEDDW-507-17	LEDDW-713-20	LEDDW-936-30
LEDDW-507-30	LEDDW-713-30	LEDDW-936-45
LEDDW-507-40	LEDDW-713-40	LEDDW-936-55
LEDDW-508-17	LEDDW-713-55	LEDDW-936-90
LEDDW-508-30	LEDDW-719-20	LEDDW-940-30
LEDDW-508-40	LEDDW-719-30	LEDDW-940-45
LEDDW-509-17	LEDDW-719-40	LEDDW-940-55
LEDDW-509-30	LEDDW-719-55	LEDDW-940-90
LEDDW-509-40	LEDDW-726-20	
LEDDW-511-17	LEDDW-726-30	
LEDDW-511-30	LEDDW-726-40	
LEDDW-511-40	LEDDW-726-55	
	LEDDW-730-20	
	LEDDW-730-30	
	LEDDW-730-40	
	LEDDW-730-55	



LED legacy light source replacements:

MR16 LED "dim-to-warm" (BLDDW) | AR111 LED "dim-to-warm" (DLDDW)

- Mounting:**
- Fixture is designed to be supported from above with 3/8" (9mm) all-thread rods.
 - Access plates for all thread attachment are positioned throughout the fixture body based on fixture length and light source spacing allowing for access from below.
 - In addition to the all thread rods, the Trimless models have a spackle flange that will allow for fixture to be secured to surrounding ceiling or wall structure via screws and flange covered with spackling compound for a smooth finished appearance.
-
- Options:**
- Patented aluminum ring sets and locking devices.
 - Pull down yokes.
 - Filter rings and shielding cylinders.
 - Filter media: up to two 1/8" (3mm) thick filter per light source.
 - Lutron Athena Wireless Node (white or black finish available).

Model # example:

MLS-2-LEDDW-507-17-1830-5-TI-REC-FL-AWNR-WH

— Lutron Athena Wireless Node: White (-AWNR-WH), Black (AWNR-BL)
 — Trimless (TL), Trimmed (TR), or Flangeless (FL)
 — Aperture: Rectangular (REC)
 — Driver/transformer incorporated (TI), primary voltage (PV)
 — Color: white (1), black (2), aluminum (5), custom (x)
 — Kelvin temperature: 1800°K - 3000°K
 — Light sources: see above list
 — Number of light sources
 — Modular Multiples® Linears® Series

Modular Multiples®

The Original Multiple Light Family of Fixtures



Available LED Modules

Model Number	Watts	Beam Angle	CRI	Lumens	Lumens per watt
LEDDW-507-17	7	17°	90+	419	60
LEDDW-507-30	7	30°	90+	394	56
LEDDW-507-40	7	40°	90+	400	57
LEDDW-508-17	8	17°	90+	575	68
LEDDW-508-30	8	30°	90+	540	70
LEDDW-508-40	8	40°	90+	556	72
LEDDW-509-17	9	17°	90+	705	78
LEDDW-509-30	9	30°	90+	658	73
LEDDW-509-40	9	40°	90+	676	75
LEDDW-511-17	11	17°	90+	830	75
LEDDW-511-30	11	30°	90+	795	72
LEDDW-511-40	11	40°	90+	818	74
LEDDW-713-20	13	20°	90+	1,211	93
LEDDW-713-30	13	30°	90+	1,194	92
LEDDW-713-40	13	40°	90+	1,123	86
LEDDW-713-55	13	55°	90+	1,167	90
LEDDW-719-20	19	20°	90+	1,689	84
LEDDW-719-30	19	30°	90+	1,676	84
LEDDW-719-40	19	40°	90+	1,599	80
LEDDW-719-55	19	55°	90+	1,659	83
LEDDW-726-20	26	20°	90+	2,217	85
LEDDW-726-30	26	30°	90+	2,204	85
LEDDW-726-40	26	40°	90+	2,107	81
LEDDW-726-55	26	55°	90+	2,227	86
LEDDW-730-20	30	20°	90+	2,539	85
LEDDW-730-30	30	30°	90+	2,493	83
LEDDW-730-40	30	40°	90+	2,379	79
LEDDW-730-55	30	55°	90+	2,491	83
LEDDW-936-30	36	30°	90+	3,032	84
LEDDW-936-45	36	45°	90+	3,018	84
LEDDW-936-55	36	55°	90+	3,090	86
LEDDW-936-90	36	90°	90+	3,157	88
LEDDW-940-30	40	30°	90+	3,325	83
LEDDW-940-45	40	45°	90+	3,308	83
LEDDW-940-55	40	55°	90+	3,428	86
LEDDW-940-90	40	90°	90+	3,449	86

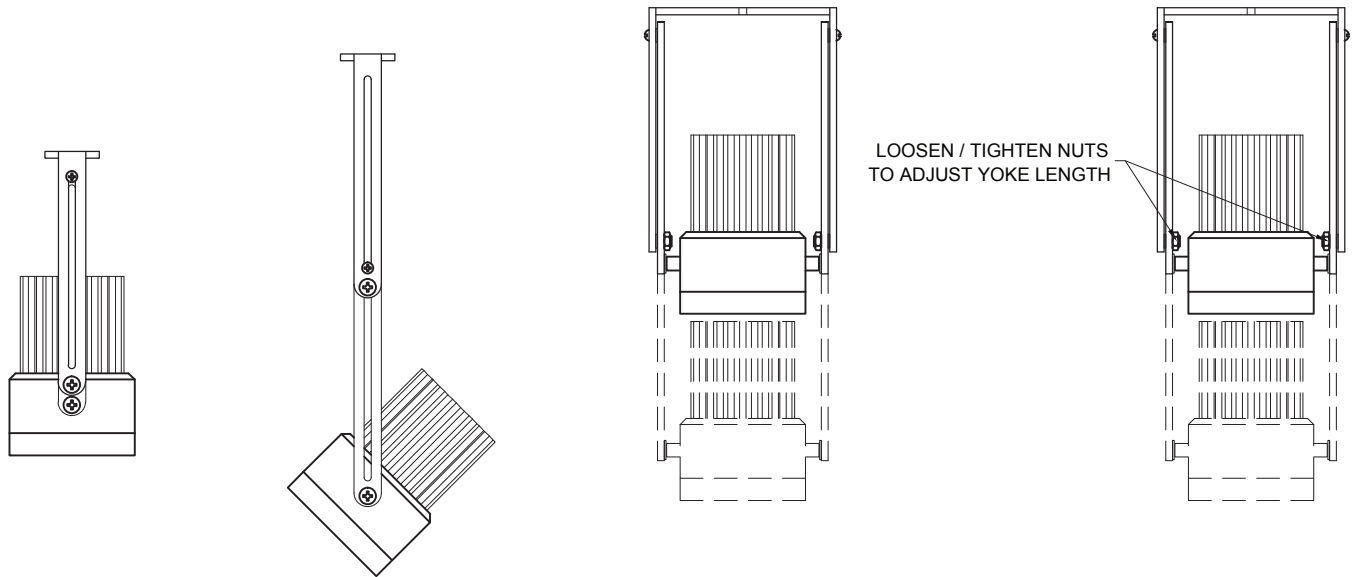
Modular Multiples®

The Original Multiple Light Family of Fixtures

Fixture Options

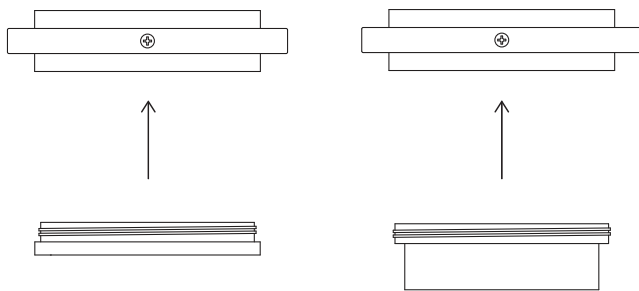
Extendable Yokes

ADD -EY TO END OF MODEL NUMBER



Shielding Options

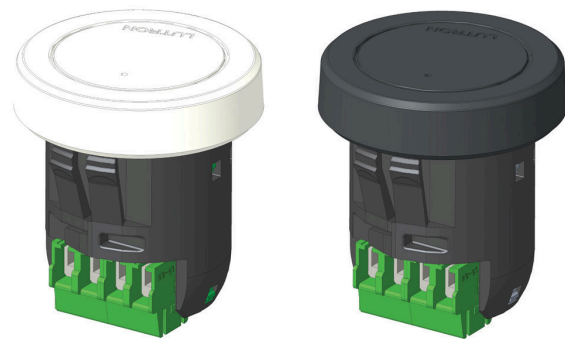
ADD SHIELDING OPTION CODE (BELOW) TO END OF MODEL NUMBER



FILTER RING (STANDARD)

SHIELDING CYLINDER (-CY)

Lutron Athena Wireless Nodes

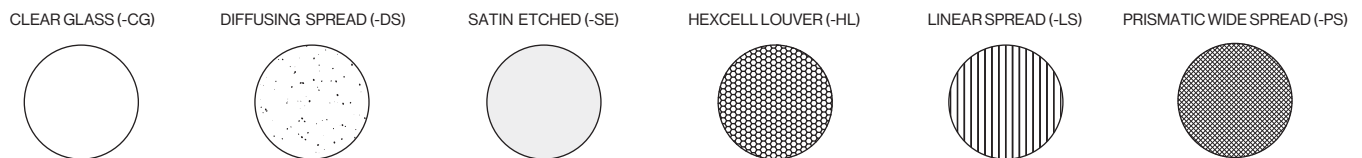


ATHENA WIRELESS NODE
WHITE (AWN-WH)

ATHENA WIRELESS NODE
BLACK (AWN-BL)

Filter Media

ADD FILTER MEDIA CODE (BELOW) TO END OF MODEL NUMBER



CLEAR GLASS (-CG)

DIFFUSING SPREAD (-DS)

SATIN ETCHED (-SE)

HEXCELL LOUVER (-HL)

LINEAR SPREAD (-LS)

PRISMATIC WIDE SPREAD (-PS)